





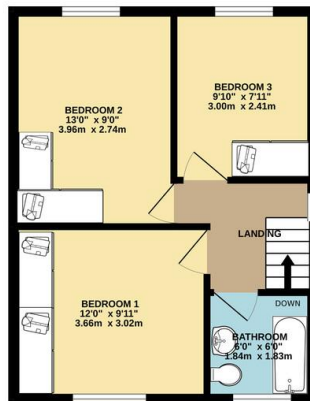
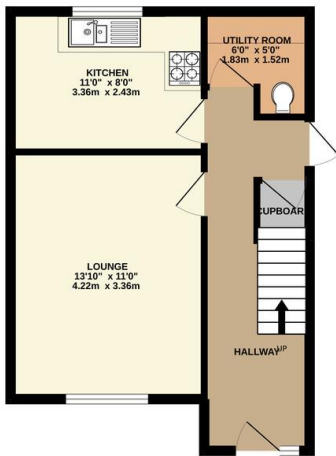
# Property Summary

Brixham Drive is an immaculately presented three bedroom semi detached family home situated in the highly desirable West Knighton / Wigston border. The accommodation has been upgraded and much improved by the current owner and comprises extended entrance porch and hall, lounge, refitted kitchen, utility room, landing to three double bedrooms, refurbished bathroom, front and private rear landscaped gardens, carport, summerhouse with power, lights and Internet, rear detached garage, driveway providing ample car standing space. Internal inspection comes highly recommended.

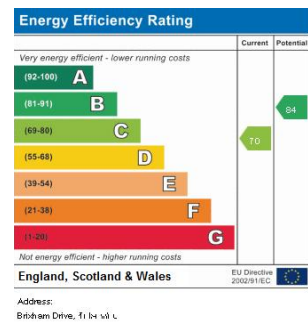


GROUND FLOOR  
392 sq.ft. (36.5 sq.m.) approx.

1ST FLOOR  
375 sq.ft. (34.8 sq.m.) approx.



TOTAL FLOOR AREA: 767 sq.ft. (71.3 sq.m.) approx.  
Whilst every attempt has been made to ensure the accuracy of the floorplan contained here, measurements of doors, windows, rooms and any other items are approximate and no responsibility is taken for any error, omission or mis-statement. This plan is for illustrative purposes only and should be used as such for any prospective purchaser. The services, systems and appliances shown have not been tested and no guarantee as to their operability or efficiency can be given.  
Made with Metropix C2022



- Semi Detached
- Three Double Bedrooms
- Highly Desirable Location
- Refitted Kitchen
- Refurbished Bathroom
- Landscaped Gardens With Open Views To The Rear
- Carport
- Detached Rear Garage

phillips george | sales & lettings

Agents Note: Whilst every care has been taken to prepare these sales particulars, they are for guidance purposes only. All measurements are approximate and for general guidance purposes only and whilst every care has been taken to ensure their accuracy, they should not be relied upon and potential buyers are advised to recheck the measurements

46 Long Street, Wigston, Leicestershire, LE18 2AH

info@phillipsgeorge.co.uk  
0116 216 8178

