



LESLEY
GREAVES
estate & letting agents



LESLEY
GREAVES
estate & letting agents



LESLEY
GREAVES
estate & letting agents

Guide Price £190,000-£200,000

Nairn Mews, Carlton, Nottingham NG4 1BE

EPC Rating D



Modern end town house offered for sale with no upward chain! This property has been newly decorated and has a brand new bathroom suite and carpets throughout. In brief the property is well presented and spans two floors and briefly comprises an entrance hall, L-shape lounge diner and kitchen to the ground floor. To the first floor is the landing with airing cupboard and glass balustrade, bathroom with an electric shower over the bath and three bedrooms. To the front is an artificially lawned garden and to the rear is a low maintenance enclosed gravelled garden. There is also a garage situated in a block to the rear. Carlton is popular residential area is close to a wide range of amenities. It includes schools, local shopping areas, supermarket, playing fields, public transport links and two leisure centres.

- Freehold
- Council tax band A

ENTRANCE HALL 5' 10" x 3' 4" (1.78m x 1.02m)

LIVING ROOM 14' 9" x 12' 2" (4.5m x 3.71m)

DINING AREA 10' 0" x 7' 11" (3.05m x 2.41m)

KITCHEN 10' 3" x 6' 11" (3.12m x 2.11m)

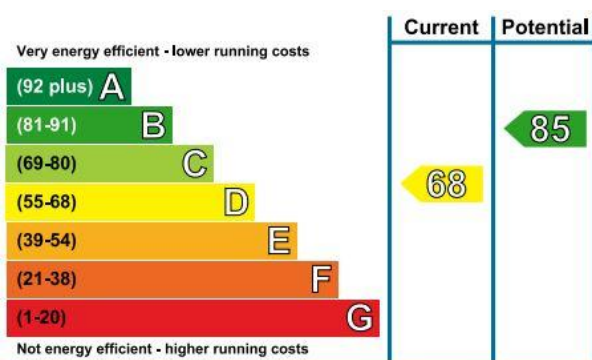
BATHROOM 6' 10" x 5' 8" (2.08m x 1.73m)

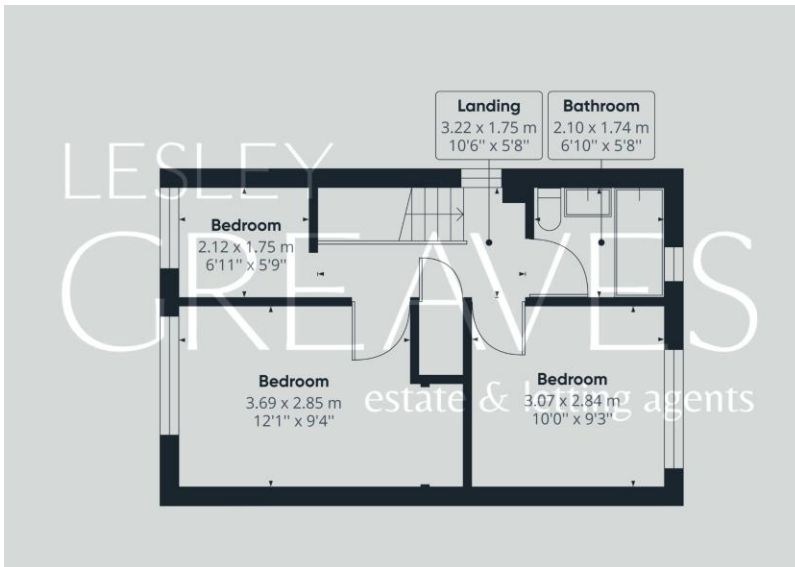
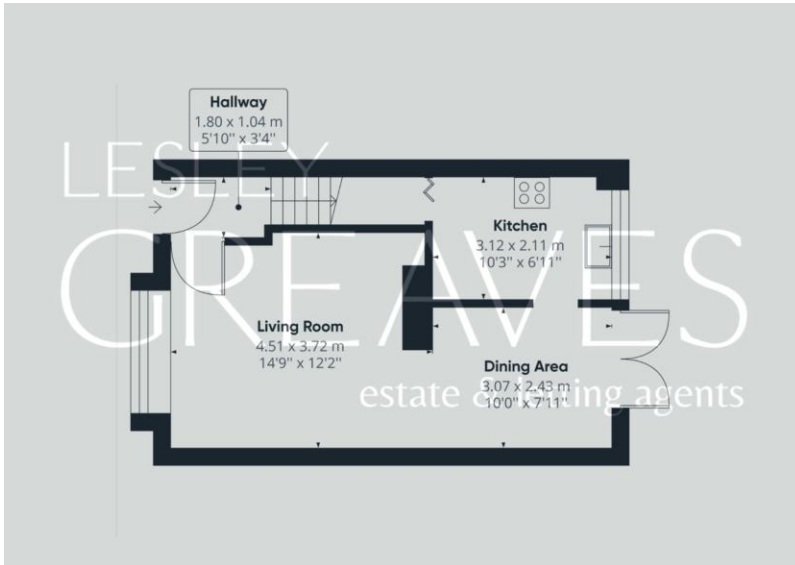
BEDROOM ONE 12' 1" x 9' 4" (3.68m x 2.84m)

BEDROOM TWO 10' 0" x 9' 3" (3.05m x 2.82m)

BEDROOM THREE 6' 11" x 5' 9" (2.11m x 1.75m)

AGENTS NOTES Under the provision of The Estate Agents Act 1979, we are required to point out that one of the owners of this property is an employee or relative of Lesley Greaves Ltd.





COUNCIL TAX BAND: A

LOCAL AUTHORITY: Gedling Borough Council

20 Main Road
Gedling
Nottingham
NG4 3HP

Contact Us
www.lesleygreaves.co.uk
sales@lesleygreaves.co.uk
0115 987 7337

Agents Note: Whilst every care has been taken to prepare these particulars, they are for guidance purposes only. All measurements are approximate and are for general guidance purposes only and whilst every care has been taken to ensure their accuracy, they should not be relied upon and potential buyers/tenants are advised to recheck the measurements.

