



David Astburys



Hampden Road, Harringay Ladder, London, N8
£450,000
Share of Freehold

15 Park Road, Crouch End, London, N8 8TE
davidastburys.com
0203 000 6787 | sales@davidastburys.com

15 Park Road, Crouch End, London, N8 8TE
davidastburys.com
0203 000 6787 | sales@davidastburys.com


- Share of Freehold
- Private Garden
- Ground Floor
- Potential To Extend STPC
- Large Dining Room and Separate Eat In Kitchen
- Fantastic Storage
- Hornsey Station 0.2 Miles
- Turnpike Lane Station 0.3 Miles

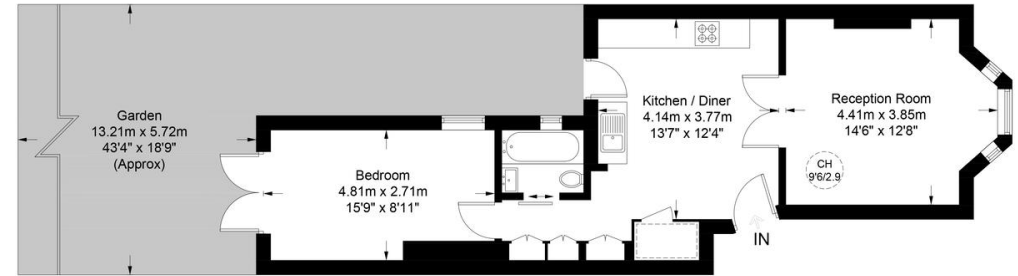


Hampden Road, N8

Approximate Gross Internal Area = 559 sq ft / 51.9 sq m



 = Reduced headroom below 1.5m / 5'0"



Ground Floor



This plan is for layout guidance only. Not drawn to scale unless stated. Windows and door openings are approximate. Whilst every care is taken in the preparation of this plan, please check all dimensions, shapes and compass bearings before making any decisions reliant upon them. (ID918251)

Agents Note: Whilst every care has been taken to prepare these sales particulars, they are for guidance purposes only. All measurements are approximate and are for general guidance purposes only and whilst every care has been taken to ensure their accuracy, they should not be relied upon and potential buyers are advised to recheck the measurements.

Energy efficiency rating for this property

This property's current energy rating is C. It has the potential to be C.

[See how to improve this property's energy performance.](#)

Score | Energy rating | Current | Potential