



**CENTURY 21.**  
London Central

# Artillery Mansions Victoria Street SW1H

**Two Bedrooms Two Bathrooms with Parking  
Share of Freehold**







## Two-bedroom Two-Bathroom Apartment £1,200,000 - Share of Freehold

A delightfully spacious two-bedroom, two-bathroom apartment in one of Westminster's most prestigious developments, Artillery Mansions SW1. The flat is situated on the eighth floor (with lift) and has been recently refurbished to a very high standard.

The accommodation comprises two double-bedrooms, a spacious reception room with built-in storage leading on to a large private balcony and has a well-equipped separate kitchen. The master bedroom has built-in storage and en-suite bathroom.

The second bedroom has a built-in wardrobe and there is a further family bathroom.

The property benefits from 24-hour concierge and has a secure underground parking space.

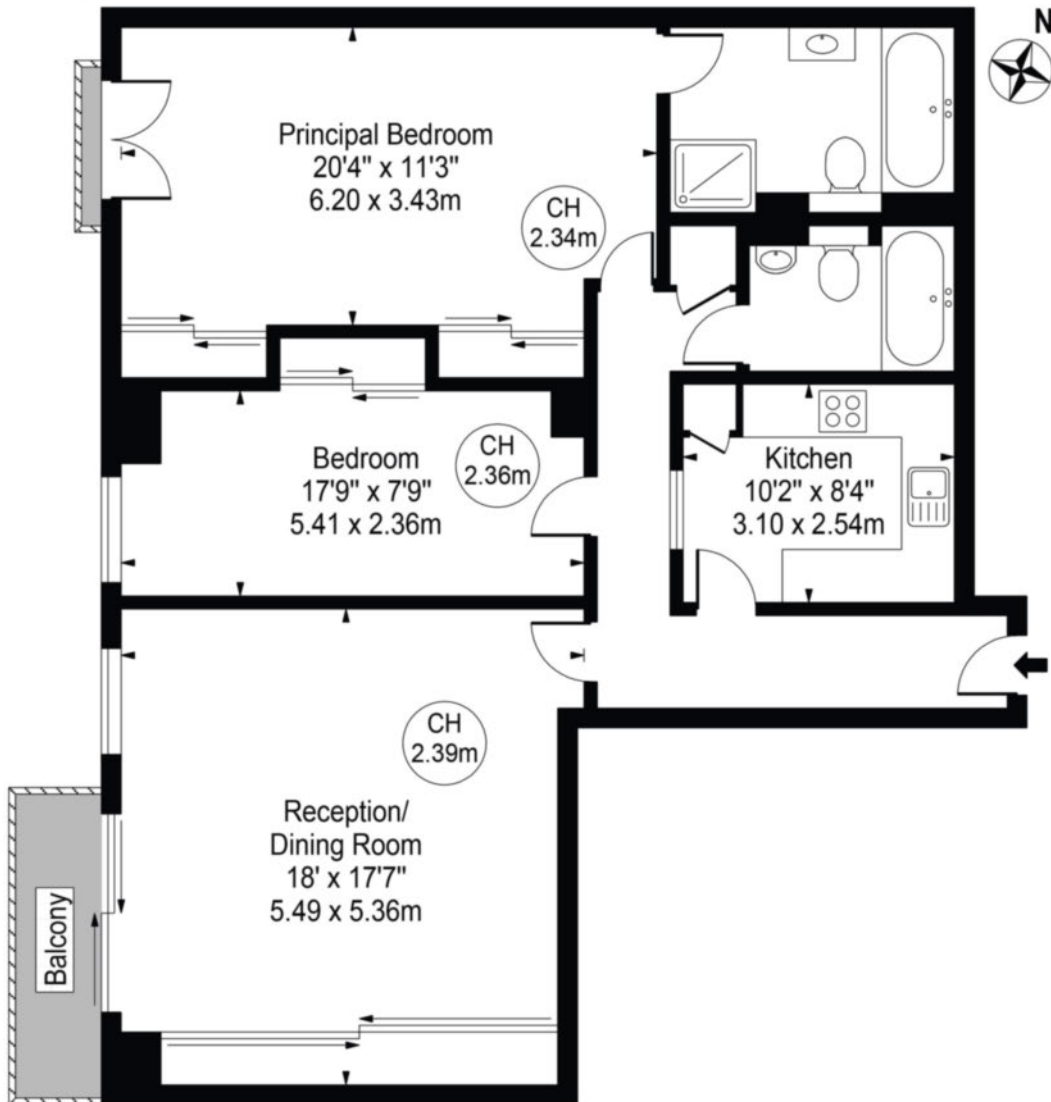






# Artillery Mansions

Approx. Gross Internal Area 1050 Sq Ft - 97.55 Sq M



## Eighth Floor

For Illustration Purposes Only - Not To Scale

This floor plan should be used as a general outline for guidance only and does not constitute in whole or in part an offer or contract. Any intending purchaser or lessee should satisfy themselves by inspection, searches, enquiries and full survey as to the correctness of each statement. Any areas, measurements or distances quoted are approximate and should not be used to value a property or be the basis of any sale or let.

Copyright Morriarti Photography & Design LTD

- Tenure: Share of Freehold with 979 years remaining
- Service charge: £9,000 pa approx.
- Ground rent: £150 pa



**Andrea Frigo**

Sales Director

M +44 (0)79 7745 6026

T +44 (0)20 7630 1357

[andrea.frigo@century21uk.com](mailto:andrea.frigo@century21uk.com)

**CENTURY 21 London Central**

85 Rochester Row

London SW1P 1LJ

[londoncentral@century21uk.com](mailto:londoncentral@century21uk.com)

