



£1,500,000 - LEASEHOLD

ASQUITH HOUSE, 27 MONCK STREET,
WESTMINSTER, LONDON SW1P





PROPERTY

ASQUITH HOUSE, 27 MONCK STREET, WESTMINSTER, LONDON SW1P

A fantastic three-bedroom, three-bathroom apartment on the fourth floor of Asquith House, a sought-after new development in the heart of Westminster.



A fantastic three-bedroom, three-bathroom apartment on the fourth floor of Asquith House, a sought-after new development in the heart of Westminster.

The property features a wide reception room with a separate kitchen and a balcony, three bedrooms, two with en-suite bathrooms and the other bathroom near to the entrance, a utility room and an allocated underground parking space. The property also benefits from 24h concierge service.



Asquith House is situated within prime central London, with easy reach of the River Thames, Westminster Abbey, the Palace of Westminster and St James' Park. Within close proximity are some of the best schools and universities in the country, including Westminster School, London School of Economics, Imperial College London and University College London (UCL)

Being in Westminster, the building has the privilege of being near to several tube and train stations such as Pimlico and Vauxhall, as well as being in the vicinity of Victoria Station, and St. James' Park tube station.



PROPERTY

ASQUITH HOUSE, 27 MONCK STREET,
WESTMINSTER, LONDON SW1P

At a glance:

- 24h concierge service
- Close to public transport
- Balcony
- Lift
- Shops and amenities nearby
- Underground parking

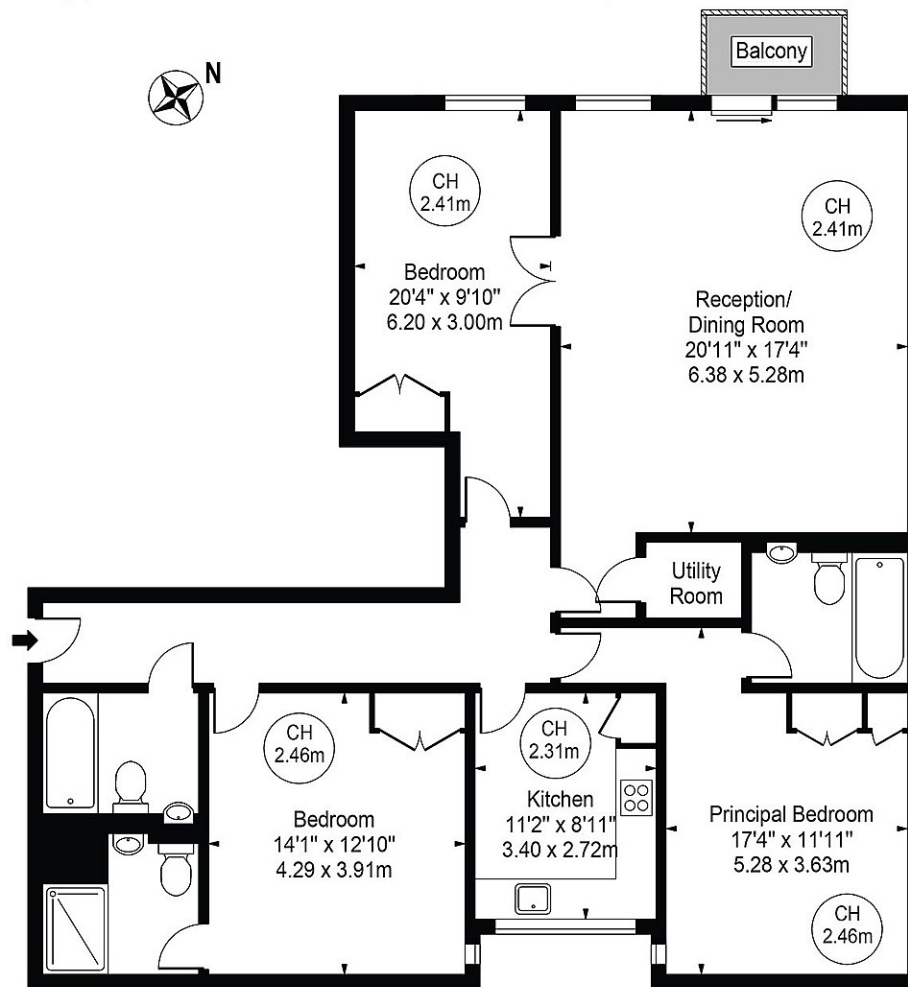
Other information:

- 980 years unexpired
- Service charge approx. £12,000 pa
- Ground Rent £350 pa



Asquith House

Approx. Gross Internal Area 1397 Sq Ft - 129.79 Sq M



Fourth Floor

For Illustration Purposes Only - Not To Scale

This floor plan should be used as a general outline for guidance only and does not constitute in whole or in part an offer or contract. Any intending purchaser or lessee should satisfy themselves by inspection, searches, enquiries and full survey as to the correctness of each statement. Any areas, measurements or distances quoted are approximate and should not be used to value a property or be the basis of any sale or let. Copyright Morriarti Photography & Design LTD

