



Oxlea Close, The Lincombes, Torquay, TQ1 2HB
Guide Price: £700,000 Tenure: Freehold



Oxlea Close, The Lincombes, Torquay, TQ1 2HB

A Five Bedroom Detached House Positioned On A Generous Corner Plot

- A Spacious and Extended Five Bedroom Detached Family Home Situated On A Generous Corner Plot
- Good Sized Modern Fitted Kitchen With Fitted Island and Separate Utility Room
- Two Reception Rooms
- Three Double Bedrooms, With An Additional Two Sizeable Single Bedrooms, With The Master Bedroom Having Distant Sea Views
- Spacious Reception Hallway With A Part Vaulted Ceiling
- Family Bathroom / WC
- Highly Sought After Location Close To Local Amenities
- Generous Sized Level Gardens With Patio Area

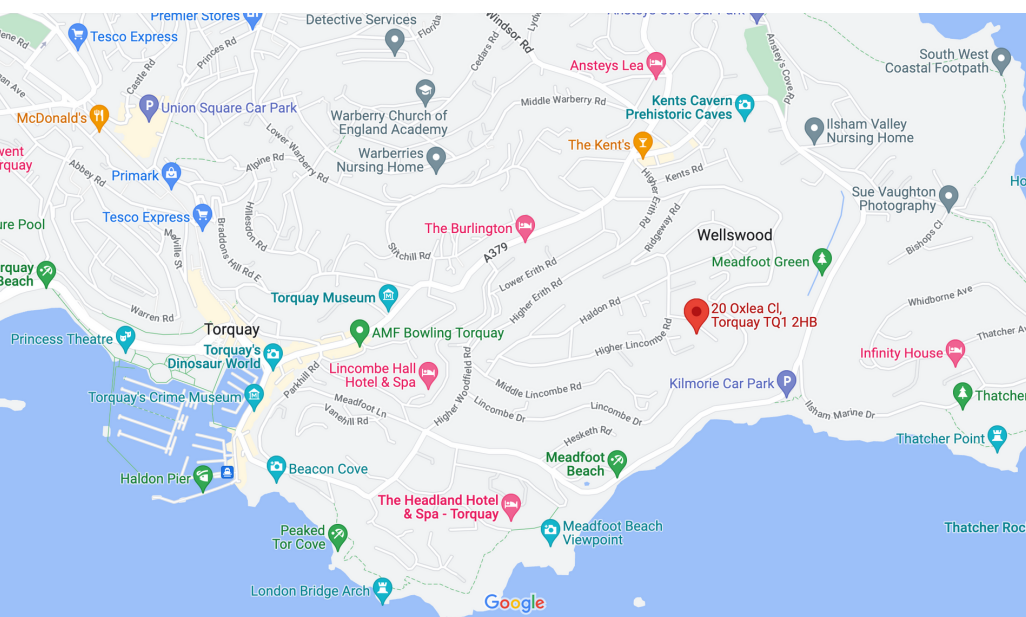


Absolute Sales and Lettings Are Proud To Present White Caps, A Detached Five Bedroom Family Home Positioned On A Level Corner Plot In A Highly Sought After Location...

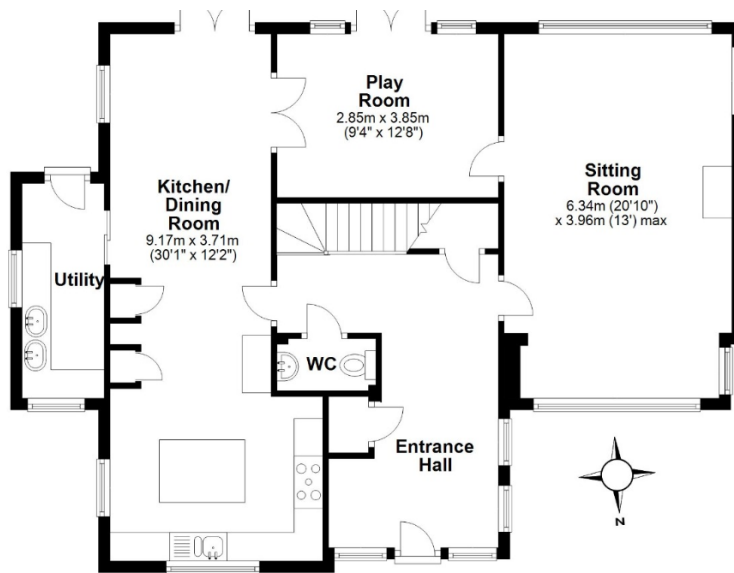
White Caps is an impressive five bedroom detached family home which has benefitted from extensions and modernisation and is situated in one of the most sought after areas in Torquay. This stunning property is also situated on a generous corner plot, which offers a great deal of peace and privacy with the potential to extend further, subject to the necessary planning permissions. This amazing property has internal accommodation briefly comprising, a spacious and airy entrance hallway with a part vaulted ceiling, a downstairs cloakroom/wc, a good sized modern fitted kitchen/diner including a central island/breakfast bar, a utility room with ample storage space, a generous sized lounge and a further second sitting room which is currently used as a playroom. On the first floor, there are three double bedrooms, with the master bedroom enjoying distant sea views, two good sized single bedrooms and a family bathroom/WC. To the front of the property is a large brick paved driveway, which offers off road parking for 2/3 cars. The rear of the property benefits from a large and level rear garden which is mainly laid to lawn, that also wraps around the side of the property. It also boasts a South Eastern aspect, with a patio area just out the kitchen/diner, perfect for alfresco dining and entertaining both family and friends in the sun.



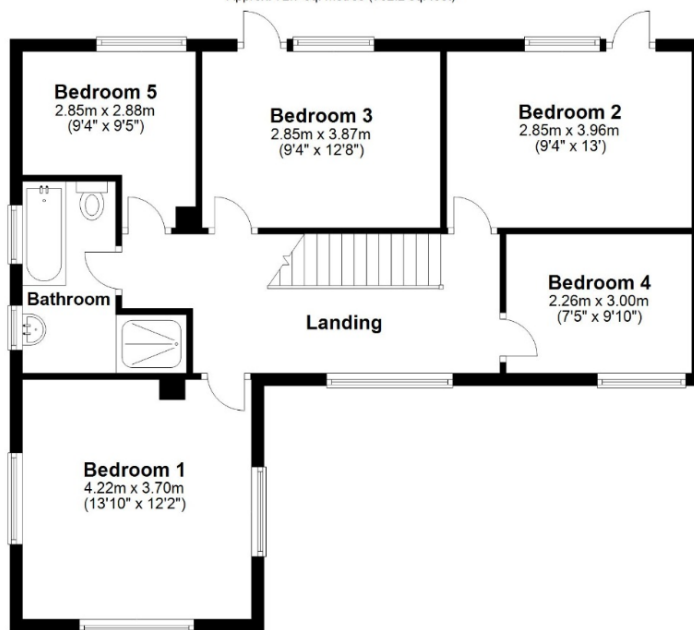
White Caps occupies a much sought after position in the ever popular area of The Lincombes, Torquay. Only a short walk away is the tranquil Wellswood village, which boasts a popular pub/restaurant, Co-op, cafe, boutique shops, hairdressers and a post office, as well as the highly regarded Ilsham C of E primary school. There is also the beautiful Meadfoot beach and Ilsham Valley within approximately 1 mile distance, with their stunning scenery and coastal cafe, perfect for those who enjoy coastal walks, kayaking or paddle boarding. Torquay town centre, seafront and deep water marina are approximately 1.5 miles distance, with their enviable array of restaurants, cafes, shops, facilities and amenities, as well as plenty of local bus stops offering access to neighbouring towns Paignton, Brixham and Newton Abbot. Torquay and Torre train stations and the ring road are also a short drive away, offering great connections to Newton Abbot, Exeter and beyond.



What3Words
 UPRN:
<https://w3w.co/cards.legal.middle>



First Floor
Approx. 72.7 sq. metres (782.2 sq. feet)



Total area: approx. 164.7 sq. metres (1773.0 sq. feet)

Have a property to sell or let?

If you are considering selling or letting your home, get in contact with us today on 01803 214214 to speak with one of our expert team who will be able to provide you with a free valuation of your home.



We refer potential purchasers to Sheehan Legal for conveyancing, Greenlight Mortgages for mortgages, McCluskey Surveyors for surveying & Team Removals for removals. It is your decision if you choose to deal with any of these companies however should you choose to use them we would receive a referral fee from them for recommending you to them as follows: Sheehan Legal £150, Greenlight Mortgages £50 to £300, McCluskey Surveyors £50, Team Removals £50. We have carefully selected these associates for the quality of their work and customer service levels.

Consumer Protection Regulations: We have not tested any apparatus, equipment, fixtures and fittings or services and so cannot verify that they are in working order or fit for the purpose. References to the Tenure of a Property are based on information supplied by the seller. We have not had sight of the Title Documents. A buyer is advised to obtain verification from their solicitor or surveyor. Floorplans shown are for guidance only and should not be relied upon. Items shown in photographs are NOT included unless specifically mentioned within these details. They may however be able by separate negotiation. You are advised to check the availability of this property before travelling any distance to view. Particulars are produced in good faith to the best of our knowledge and are set out as a general guide only.

