



3 Bedroom Mid Terraced House **£1,350**

Alma Place, High Street, Marlborough, SN8 1AF

mcfarlane
property.com

3 Bedrooms Mid Terraced Marlborough

- Town Centre Location
- Mid Terrace House
- Three Double Bedrooms
- Fitted Kitchen / Dining Room

Charming mid-terrace house pleasantly situated on a cobbled no-through road just moments away from Marlborough's historic High Street. With accommodation over three floors the property boasts three double bedrooms; fitted kitchen / dining room; living room with wood-burner; family bathroom ensuite shower room and parking for one car or use as garden, the kitchen window overlooks the beer garden of the pub next door.

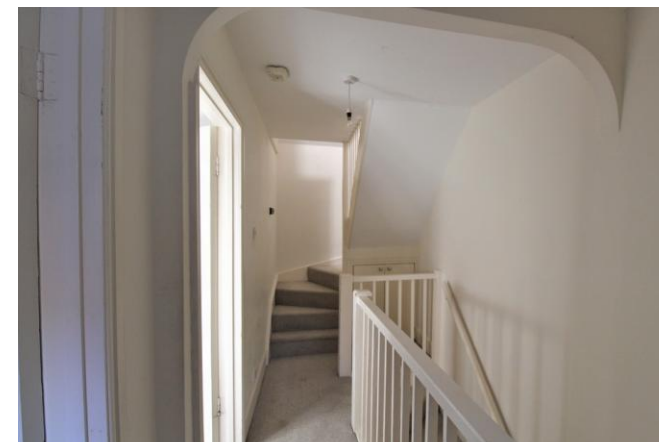
Holding Deposit: £311.53

Deposit: £1,557.69

Initial Term: 12 Months

Council Tax Band: C

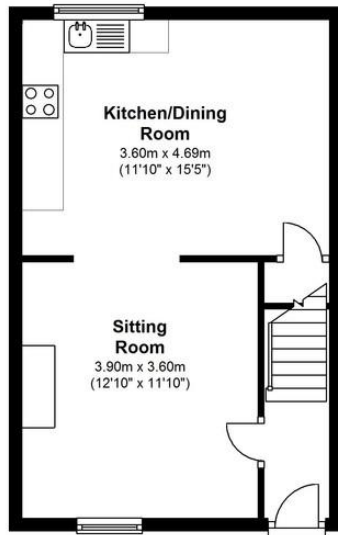
EPC Rating: D



We 
where you
LIVE

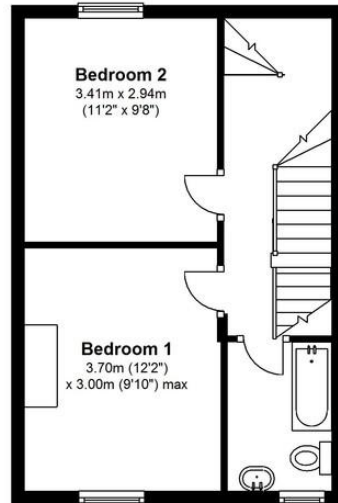
Ground Floor

Approx. 36.2 sq. metres (390.1 sq. feet)



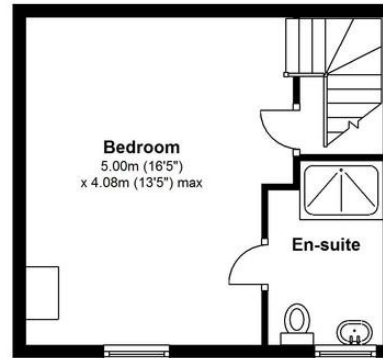
First Floor

Approx. 33.8 sq. metres (363.9 sq. feet)



Second Floor

Approx. 27.3 sq. metres (293.5 sq. feet)



Total area: approx. 97.3 sq. metres (1047.5 sq. feet)

This floorplan is to be used as guidance only. The accuracy of these plans cannot be verified.
Plan produced using PlanUp.

Our team are friendly, experienced and are all local. They know it better than they do their own living rooms and can help you find what you're looking for because **we love where we live.**

We would be delighted to show you around this property.

**Because every home
needs a personal touch.**

**If you would like to view this
property then please get in touch.**

📞 01793 611841

✉ lettings@mcfarlaneproperty.com

mcfarlaneproperty.com

mcfarlane
property.com

Cricklade.

102 High Street
Cricklade SN6 6AA

📞 01793 751044

Marlborough.

106 High Street
Marlborough SN8 1LT

📞 01672 514380

Old Town.

28-30 Wood Street
Swindon SN1 4AB

📞 01793 296880

Swindon.

The Village Centre,
Redhouse SN25 2FW

📞 01793 296600

Agents Note: Whilst every care has been taken to prepare these sales particulars, they are for guidance purposes only. All measurements are approximate and are for general guidance purposes only and whilst every care has been taken to ensure their accuracy, they should not be relied upon and potential buyers are advised to recheck the measurements