

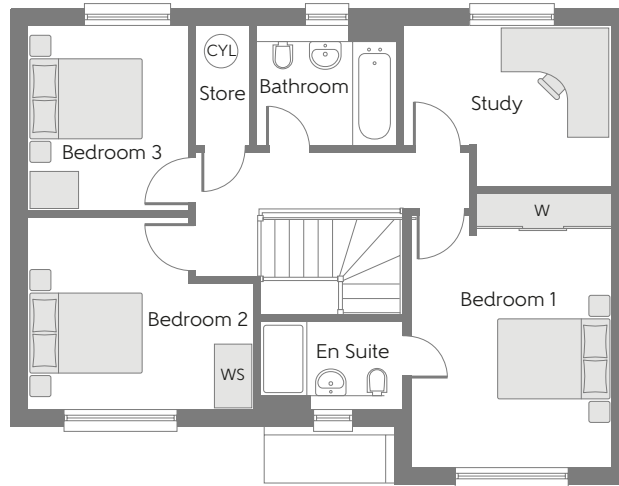
# The Westgate

THREE BEDROOM HOME  
PLOTS 7 & 9



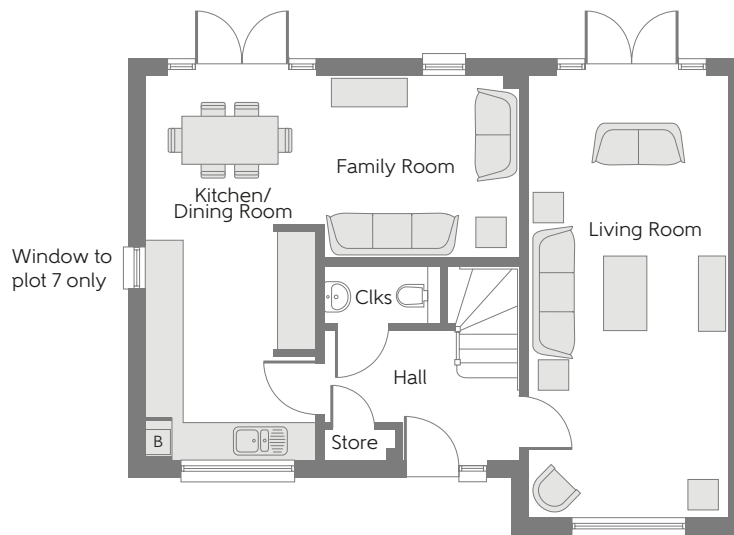
[bellway.co.uk](https://bellway.co.uk)

**Bellway**



### First Floor

Bedroom 1	4.350m x 3.160m	14'3" x 10'4"
Bedroom 1 En Suite	2.315m x 1.420m	7'7" x 4'8"
Bedroom 2	3.580m x 3.060m	11'9" x 10'0"
Bedroom 3	2.930m x 2.560m	9'7" x 8'5"
Study	3.285m x 2.540m	10'9" x 8'4"
Bathroom	2.250m x 1.900m	7'3" x 6'2"



### Ground Floor

Kitchen/Dining/ Family Room	6.085m x 5.925m	20'0" x 19'5"
Living Room	6.985m x 3.160m	22'11" x 10'4"
Cloakroom	1.860m x 0.900m	6'1" x 2'11"

**B** - Boiler Clks - Cloakroom W - Fitted Wardrobe WS - Wardrobe Space (suggestion only, wardrobe not included) **CYL** - Hot Water Cylinder

**Furniture arrangements are for illustrative purposes only. Items are not included, nor to scale.**

The items shown in this key may be subject to change, and positions could vary from those indicated on this floorplan. Please refer to Sales Advisor for details of your selected plot. Computer generated image shown overleaf. External finishes, landscaping and configuration may vary from plot to plot. Please refer to Sales Advisor for further details. All dimensions are approximate and should not be used for carpet sizes, appliance spaces or furniture. We operate a policy of continuous improvement and individual features such as kitchen and bathroom layouts, doors, windows, garages and elevational treatments may vary from time to time. Consequently these particulars should be treated as general guidance only and do not constitute a contract, part of a contract or a warranty.

# The Chalvington

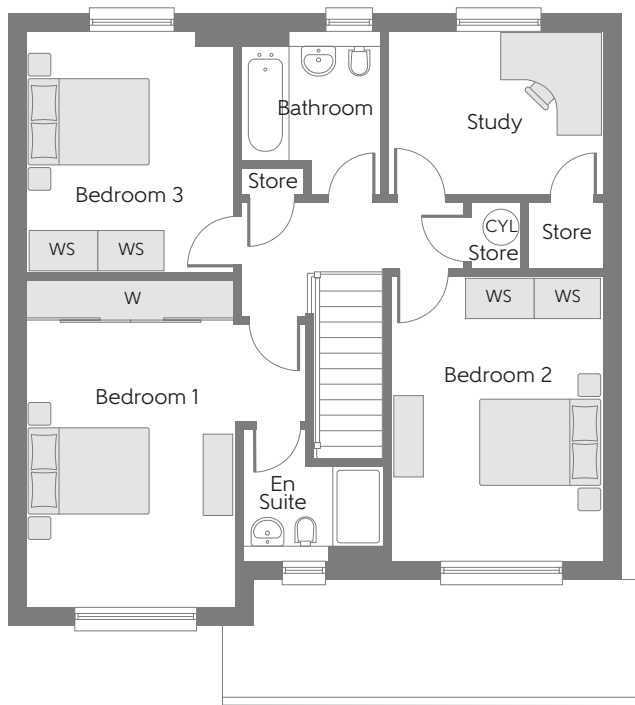
THREE BEDROOM HOME

PLOT 24



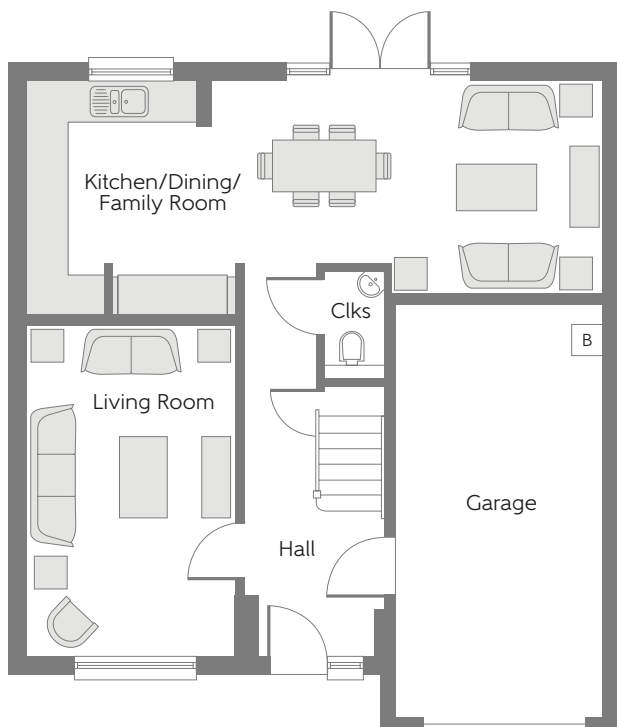
[bellway.co.uk](https://bellway.co.uk)

**Bellway**



### First Floor

Bedroom 1	4.825m x 4.100m	15'10" x 13'5"
Bedroom 1 En Suite	2.102m x 1.952m	6'11" x 6'5"
Bedroom 2	4.215m x 3.120m	13'10" x 10'3"
Bedroom 3	3.532m x 3.045m	11'7" x 10'0"
Study	3.157m x 2.399m	10'4" x 7'10"
Bathroom	2.399m x 2.080m	7'10" x 6'10"



### Ground Floor

Kitchen/Dining/ Family Room	8.445m x 3.445m	27'8" x 11'4"
Living Room	4.850m x 3.045m	15'11" x 10'0"
Cloakroom	1.625m x 0.900m	5'4" x 2'11"

**B** - Boiler Clks - Cloakroom W - Fitted Wardrobe WS - Wardrobe Space (suggestion only, wardrobe not included) **CYL** - Hot Water Cylinder

**Furniture arrangements are for illustrative purposes only. Items are not included, nor to scale.**

The items shown in this key may be subject to change, and positions could vary from those indicated on this floorplan. Please refer to Sales Advisor for details of your selected plot. Computer generated image shown overleaf. External finishes, landscaping and configuration may vary from plot to plot. Please refer to Sales Advisor for further details. All dimensions are approximate and should not be used for carpet sizes, appliance spaces or furniture. We operate a policy of continuous improvement and individual features such as kitchen and bathroom layouts, doors, windows, garages and elevational treatments may vary from time to time. Consequently these particulars should be treated as general guidance only and do not constitute a contract, part of a contract or a warranty.



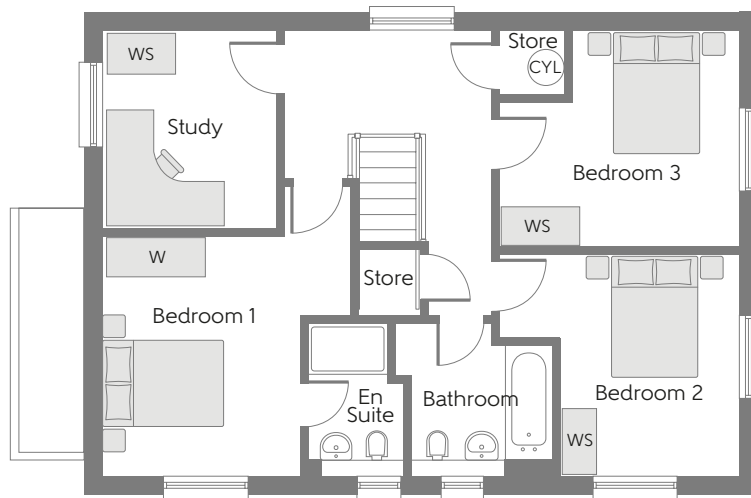
# The Parsonage

THREE BEDROOM HOME  
PLOT 12



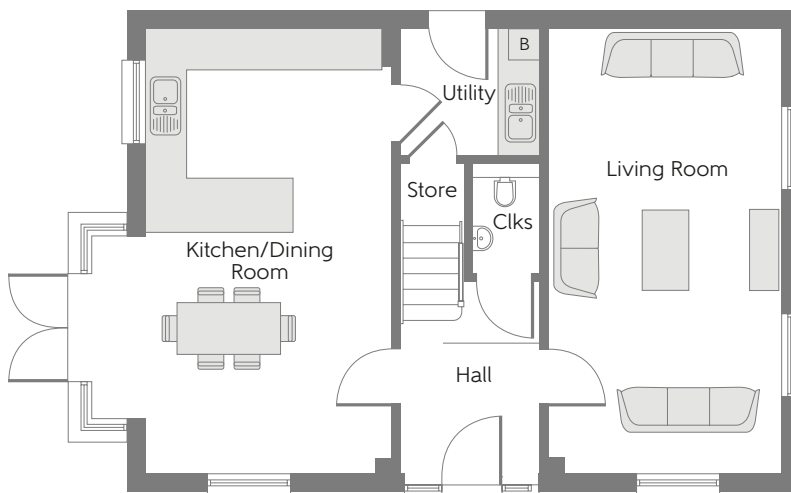
[bellway.co.uk](https://bellway.co.uk)

**Bellway**



## First Floor

Bedroom 1	4.284m x 3.662m	14'1" x 12'0"
Bedroom 1 En Suite	2.241m x 1.440m	7'4" x 4'9"
Bedroom 2	3.527m x 3.269m	11'7" x 10'9"
Bedroom 3	3.527m x 3.178m	11'7" x 10'5"
Study	2.925m x 2.580m	9'7" x 8'6"
Bathroom	2.363m x 2.254m	7'9" x 7'5"



## Ground Floor

Kitchen/Dining Room	6.536m x 3.417m	21'5" x 11'3"
Living Room	6.536m x 4.372m	21'5" x 14'4"
Cloakroom	1.650m x 0.997m	5'5" x 3'3"

**B** - Boiler Clks - Cloakroom W - Fitted Wardrobe WS - Wardrobe Space (suggestion only, wardrobe not included) **CYL** - Hot Water Cylinder

**Furniture arrangements are for illustrative purposes only. Items are not included, nor to scale.**

The items shown in this key may be subject to change, and positions could vary from those indicated on this floorplan. Please refer to Sales Advisor for details of your selected plot. Computer generated image shown overleaf. External finishes, landscaping and configuration may vary from plot to plot. Please refer to Sales Advisor for further details. All dimensions are approximate and should not be used for carpet sizes, appliance spaces or furniture. We operate a policy of continuous improvement and individual features such as kitchen and bathroom layouts, doors, windows, garages and elevational treatments may vary from time to time. Consequently these particulars should be treated as general guidance only and do not constitute a contract, part of a contract or a warranty.

# The Millhouse

TWO BEDROOM HOME

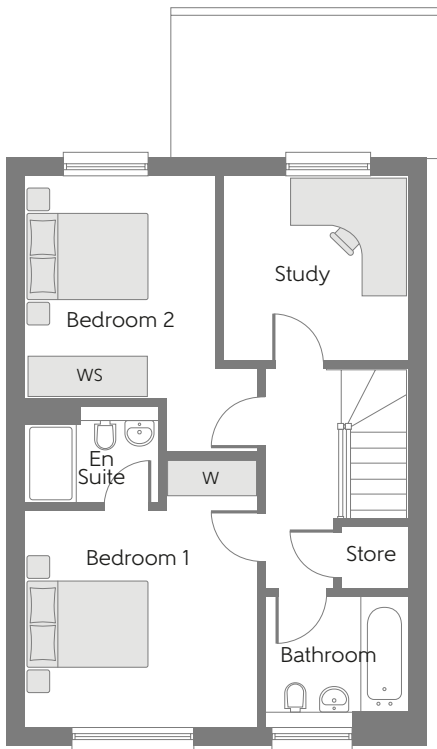
PLOT 6



[bellway.co.uk](https://bellway.co.uk)

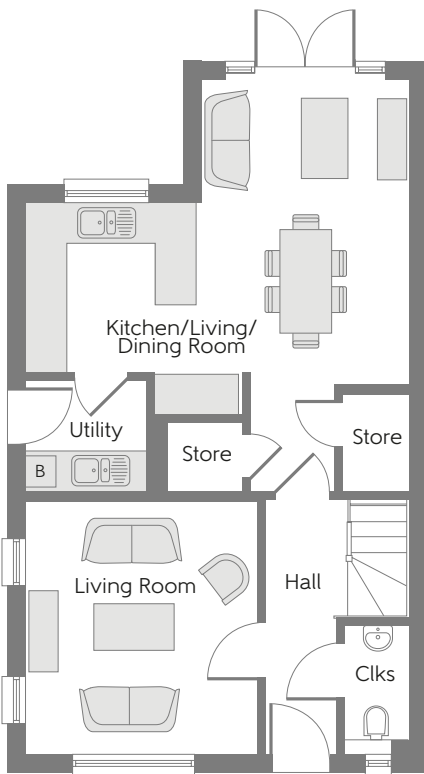
**Bellway**





### First Floor

Bedroom 1	3.927m x 3.437m	12'11" x 11'3"
Bedroom 1 En Suite	1.978m x 1.460m	6'6" x 4'9"
Bedroom 2	4.044m x 3.437m	13'3" x 11'3"
Study	2.739m x 2.737m	9'0" x 9'0"
Bathroom	2.110m x 1.912m	6'11" x 6'3"



### Ground Floor

Kitchen/Dining/ Family Room	6.050m x 5.635m	19'10" x 18'6"
Living Room	3.710m x 3.419m	12'2" x 11'3"
Cloakroom	1.913m x 0.958m	5'10" x 5'5"
Utility	1.775m x 1.662m	5'10" x 5'5"

B - Boiler Clks - Cloakroom W - Fitted Wardrobe WS - Wardrobe Space (suggestion only, wardrobe not included)

**Furniture arrangements are for illustrative purposes only. Items are not included, nor to scale.**

The items shown in this key may be subject to change, and positions could vary from those indicated on this floorplan. Please refer to Sales Advisor for details of your selected plot. Computer generated image shown overleaf. External finishes, landscaping and configuration may vary from plot to plot. Please refer to Sales Advisor for further details. All dimensions are approximate and should not be used for carpet sizes, appliance spaces or furniture. We operate a policy of continuous improvement and individual features such as kitchen and bathroom layouts, doors, windows, garages and elevational treatments may vary from time to time. Consequently these particulars should be treated as general guidance only and do not constitute a contract, part of a contract or a warranty.



# The Farley

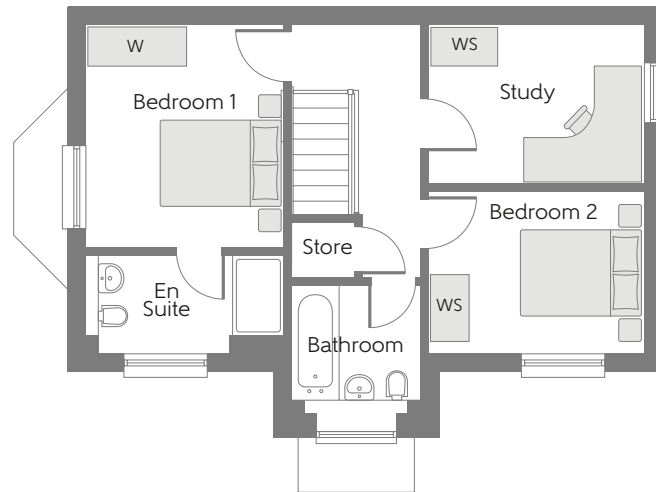
TWO BEDROOM HOME

PLOT 8



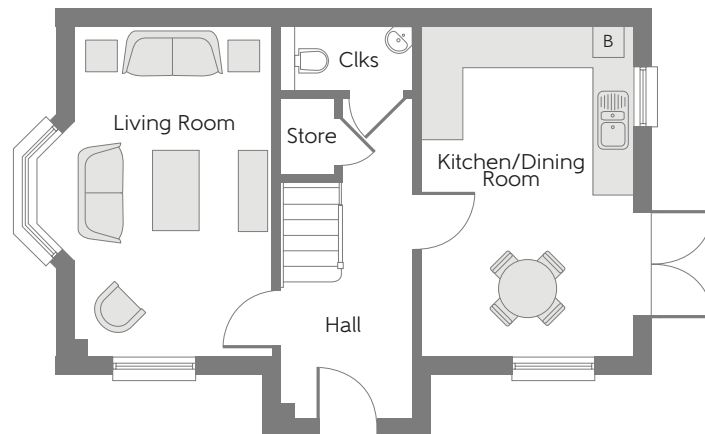
[bellway.co.uk](https://bellway.co.uk)

**Bellway**



### First Floor

Bedroom 1	3.302m x 2.950m	10'10" x 9'8"
Bedroom 1 En Suite	2.949m x 1.457m	9'8" x 4'9"
Bedroom 2	3.174m x 2.389m	10'5" x 7'10"
Study	3.174m x 2.370m	10'5" x 7'9"
Bathroom	1.903m x 1.422m	6'3" x 4'8"



### Ground Floor

Kitchen/Dining Room	4.847m x 3.112m	15'11" x 10'3"
Living Room	4.847m x 3.440m	15'11" x 11'3"
Cloakroom	1.922m x 0.959m	6'4" x 3'2"

**B** - Boiler Clks - Cloakroom W - Fitted Wardrobe WS - Wardrobe Space (suggestion only, wardrobe not included)

**Furniture arrangements are for illustrative purposes only. Items are not included, nor to scale.**

The items shown in this key may be subject to change, and positions could vary from those indicated on this floorplan. Please refer to Sales Advisor for details of your selected plot. Computer generated image shown overleaf. External finishes, landscaping and configuration may vary from plot to plot. Please refer to Sales Advisor for further details. All dimensions are approximate and should not be used for carpet sizes, appliance spaces or furniture. We operate a policy of continuous improvement and individual features such as kitchen and bathroom layouts, doors, windows, garages and elevational treatments may vary from time to time. Consequently these particulars should be treated as general guidance only and do not constitute a contract, part of a contract or a warranty.

# The Willett

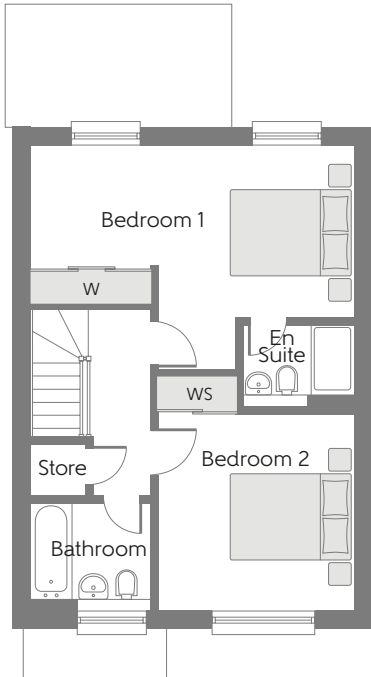
TWO BEDROOM HOME

PLOTS 34, 38 & 41



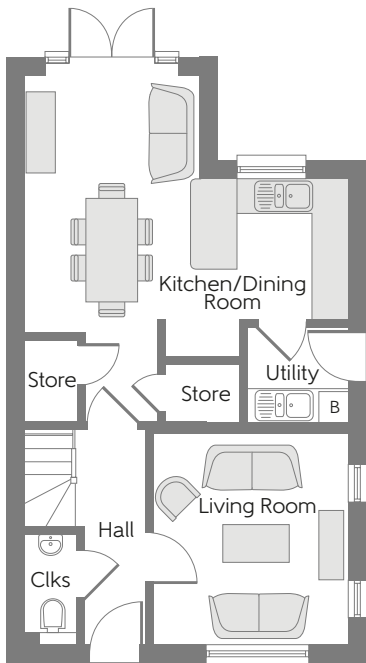
[bellway.co.uk](https://bellway.co.uk)

**Bellway**



### First Floor

Bedroom 1	5.620m x 3.890m	18'5" x 12'9"
Bedroom 1 En Suite	1.960m x 1.430m	6'5" x 4'7"
Bedroom 2	4.080m x 3.420m	13'4" x 11'3"
Bathroom	2.07m x 1.9m	6'8" x 4'5"



### Ground Floor

Kitchen/Dining Room	6.04m x 5.62m	19'9" x 18'5"
Living Room	3.70m x 3.34m	12'1" x 10'11"
Cloakroom	1.60m x 0.90m	5'3" x 2'11"

**B** - Boiler Clks - Cloakroom W - Fitted Wardrobe WS - Wardrobe Space (suggestion only, wardrobe not included)

**Furniture arrangements are for illustrative purposes only. Items are not included, nor to scale.**

The items shown in this key may be subject to change, and positions could vary from those indicated on this floorplan. Please refer to Sales Advisor for details of your selected plot. Computer generated image shown overleaf. External finishes, landscaping and configuration may vary from plot to plot. Please refer to Sales Advisor for further details. All dimensions are approximate and should not be used for carpet sizes, appliance spaces or furniture. We operate a policy of continuous improvement and individual features such as kitchen and bathroom layouts, doors, windows, garages and elevational treatments may vary from time to time. Consequently these particulars should be treated as general guidance only and do not constitute a contract, part of a contract or a warranty.



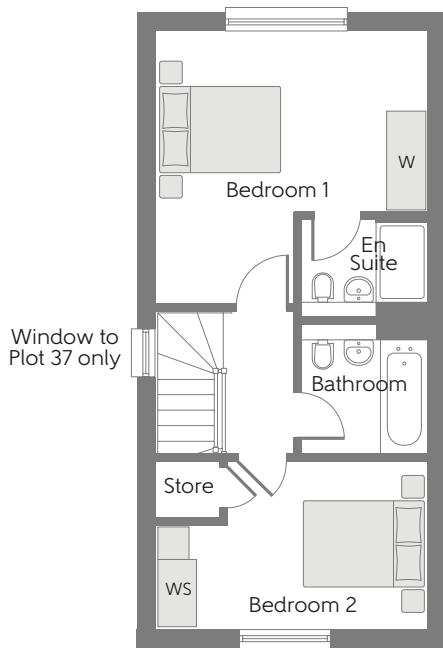
# The Potter

TWO BEDROOM HOME  
PLOTS 35, 36, 37, 39 & 40



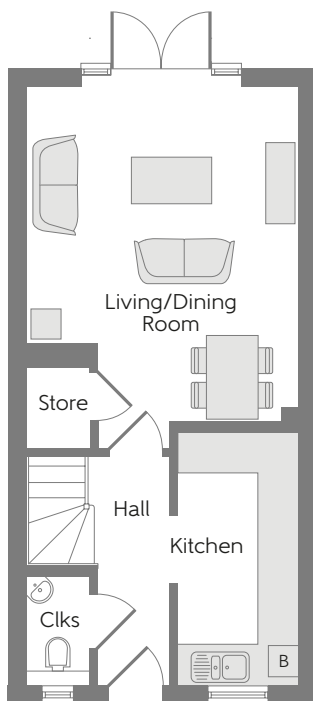
[bellway.co.uk](https://www.bellway.co.uk)

**Bellway**



### First Floor

Bedroom 1	4.036m x 3.992m	13'3" x 13'1"
Bedroom 1 En Suite	1.863m x 1.475m	6'1" 4'10"
Bedroom 2	3.992m x 2.467m	13'1" x 8'1"
Bathroom	1.917m x 1.862m	6'3" 6'1"



### Ground Floor

Kitchen	3.720m x 1.800m	12'2" x 5'11"
Living/Dining Room	5.338m x 3.992m	17'6" x 13'1"
Cloakroom	1.600m x 0.939m	5'3" x 3'1"

**B** - Boiler Clks - Cloakroom W - Fitted Wardrobe WS - Wardrobe Space (suggestion only, wardrobe not included)

**Furniture arrangements are for illustrative purposes only. Items are not included, nor to scale.**

The items shown in this key may be subject to change, and positions could vary from those indicated on this floorplan. Please refer to Sales Advisor for details of your selected plot. Computer generated image shown overleaf. External finishes, landscaping and configuration may vary from plot to plot. Please refer to Sales Advisor for further details. All dimensions are approximate and should not be used for carpet sizes, appliance spaces or furniture. We operate a policy of continuous improvement and individual features such as kitchen and bathroom layouts, doors, windows, garages and elevational treatments may vary from time to time. Consequently these particulars should be treated as general guidance only and do not constitute a contract, part of a contract or a warranty.