



 3

Bedrooms

 1

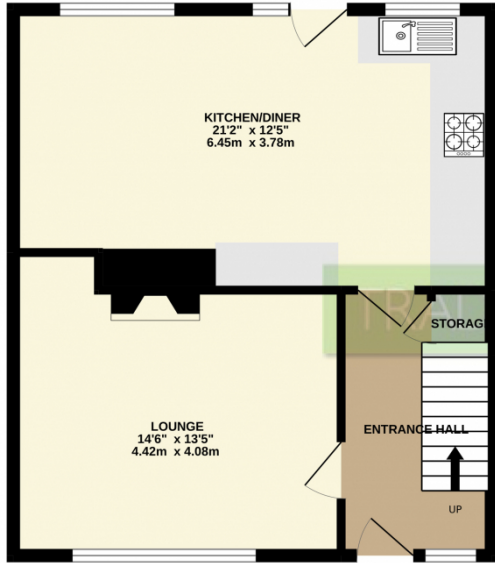
Bathroom



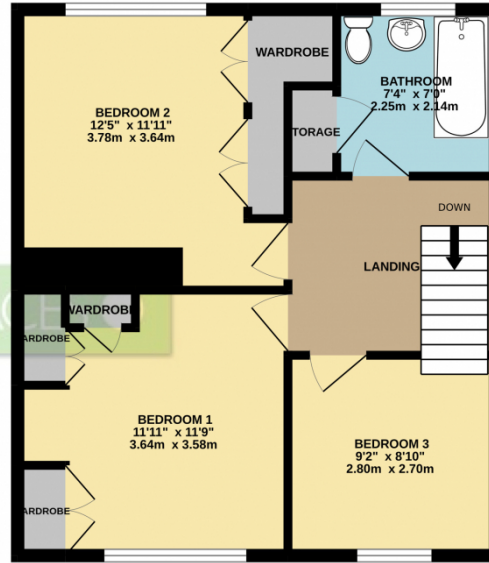


BEING SOLD WITH NO CHAIN! TRADING PLACES ESTATE AGENTS are delighted to offer for sale this three bedroom mid terrace property. Larger than expected the accommodation comprises welcoming hallway, lounge, large dining kitchen, shaped landing, the three well proportioned bedrooms & a three piece bathroom suite. The property is uPVC double glazed & is warmed by gas central heating. Externally to the front there is a pathway leading to the front door along with a pleasant garden. To the rear there is a paved patio area with lawned garden beyond. Ideally placed for transport links, well regarded schools & amenities.

GROUND FLOOR
498 sq.ft. (46.2 sq.m.) approx.



1ST FLOOR
498 sq.ft. (46.3 sq.m.) approx.



TOTAL FLOOR AREA : 996 sq.ft. (92.5 sq.m.) approx.

Whilst every attempt has been made to ensure the accuracy of the floorplan contained here, measurements of doors, windows, rooms and any other items are approximate and no responsibility is taken for any error, omission or mis-statement. This plan is for illustrative purposes only and should be used as such by any prospective purchaser. The services, systems and appliances shown have not been tested and no guarantee as to their operability or efficiency can be given.
Made with Metropix ©2022

