

**For Rent**



## People Make Places



**Wellington Court, Shelton Street, Covent Garden WC2**

2 bedrooms | TBC sq ft

£675 pw





A lovely two bedroom, one shower room apartment situated on the second floor (with lift) of a great development in central Covent Garden, close to both St Martins Courtyard and also the many independent shops and cafes in Seven Dials.

#### What you need to know

- Two bedrooms
- One shower room
- Open plan kitchen reception room
- Second floor with lift
- Modern finish
- Unfurnished
- Wood floors throughout
- High specification
- Available early January
- Close to Leicester Square and Covent Garden stations







### Overview

The apartment has a contemporary feel throughout with modern kitchen and bathrooms. Available early January on an unfurnished basis, 3 year contract with a 6 months mutual break clause. Westminster Council tax band E.

WHAT WE LOVE: Contemporary design  
Amazing location  
Great for sharers  
Moments from Covent Garden Piazza  
Fantastic built in wardrobes.

WHAT YOU NEED TO KNOW: Second floor with lift  
Two double bedrooms  
Two shower rooms (no bath)  
Minutes from Leicester Square & Covent Garden tube  
Westminster Council Tax  
Photos are of the flat directly below.





**Wellington Court, Shelton Street, Covent Garden WC2**



# People Make Places

London is collection of inspiring urban villages and one of the most exciting places in the world to live, work & play.

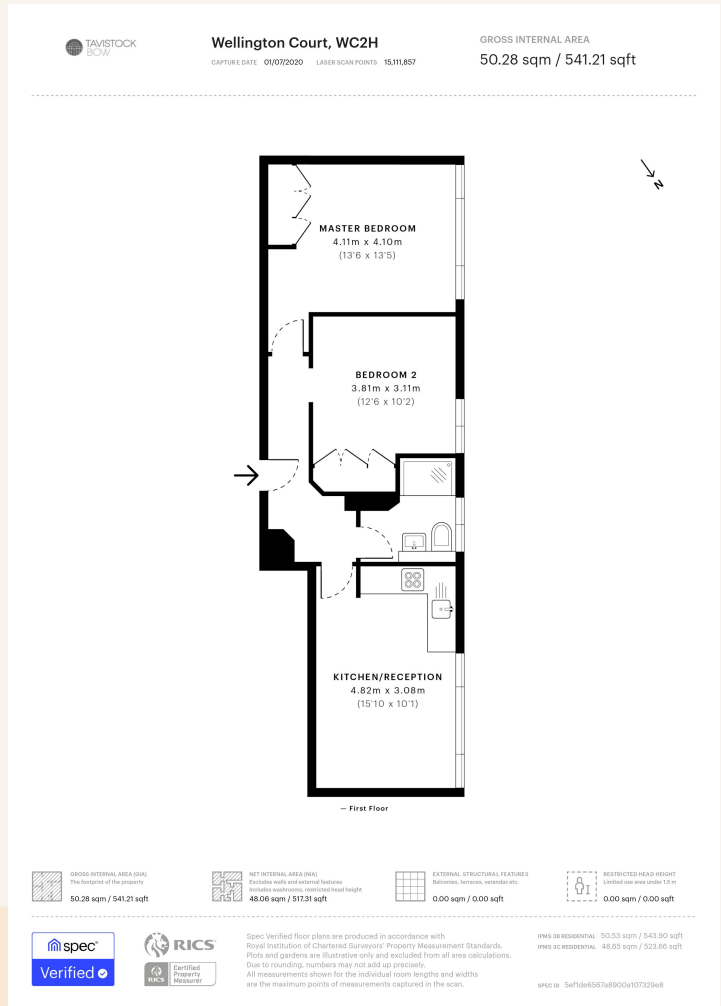
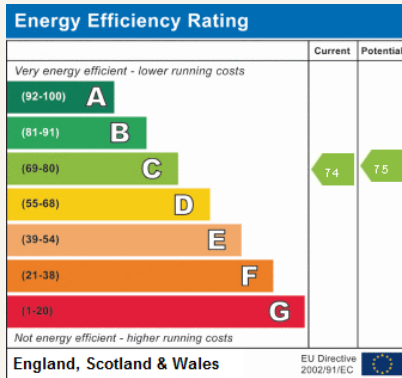
We work with both property owners and their occupiers, sharing the story of these vibrant neighbourhoods, conveying the unique soul & energy to future custodians, the people who'll keep them buzzing.

And unlike many real estate businesses we're not just about buildings, because streets & buildings don't make a neighbourhood.

We're about building relationships, because **people make places**.

MISINTERPRETATION ACT (COPYRIGHT) DISCLAIMER: Tavistock Bow Ltd for themselves and for the vendor(s) of this property whose agents they are, given notice that: 1. These particulars do not constitute, not constitute any part of, an offer or contract. 2. None of the statements contained in these particulars as to the property are to be relied on as statements or representations of fact. 3. Any intending purchaser or lessee must satisfy themselves by inspection or otherwise as to the correctness of each of the statements contained in these particulars. 4. The vendor(s) or lessor(s) do not make or give and neither Tavistock Bow Ltd nor any person in their employment has any authority to make or give any representation or warranty whatever in relation to this property. Finance Act 1989, Unless otherwise stated all prices and rents are quote exclusive of VAT. Property Misrepresentation Act 1991; These details are believed to be correct at the time of compilation but may be subject to subsequent amendment.

Follow us:     @tavistockbow



**tavistockbow**

21 New Row, Covent Garden,  
London, WC2N 4LE

t: 020 7477 2177  
e: hello@tavistockbow.com  
w: tavistockbow.com



**Wellington Court, Shelton Street, Covent Garden WC2**