

For Rent



People Make Places



Shelton Street, Covent Garden WC2

2 bedrooms | 541 sq ft

£700 pw





With two double bedrooms and a contemporary aesthetic throughout, this apartment is ideal for two sharers. It is situated on the second floor, with lift access, of a sought after block in Seven Dials and its many independent shops and eateries. Available late July unfurnished.

What you need to know

- Two bedrooms
- One shower rooms
- Open Plan Kitchen
- Second floor with lift
- Modern finish
- Unfurnished
- Wood floors throughout
- High specification
- Available late July
- Close to Leicester Square and Covent Garden stations





Overview

Perfect for two sharers, this two-bedroom apartment is located in a popular block on Shelton Street. Both double bedrooms have fitted useful storage and the contemporary kitchen is open-plan to the living area. There are wooden floors throughout and a modern shower room. Please note that the photos are indicative of another property in the building.

This apartment is located on the periphery of Seven Dials, a network of streets filled with independent boutiques and eating options such as Seven Dials Market and The Yards, home to Dishoom and Fair Shot Cafe, a thriving social enterprise cafe. Leicester Square (Northern and Piccadilly Lines), Covent Garden (Piccadilly Line) and Tottenham Court Road (Central, Northern and Elizabeth Lines) Underground Stations are all within walking distance.

The apartment is available late July on an unfurnished basis. Subject to contract and satisfactory references, the landlord offers a three-year lease with a mutual rolling six-month break



People Make Places

London is collection of inspiring urban villages and one of the most exciting places in the world to live, work & play.

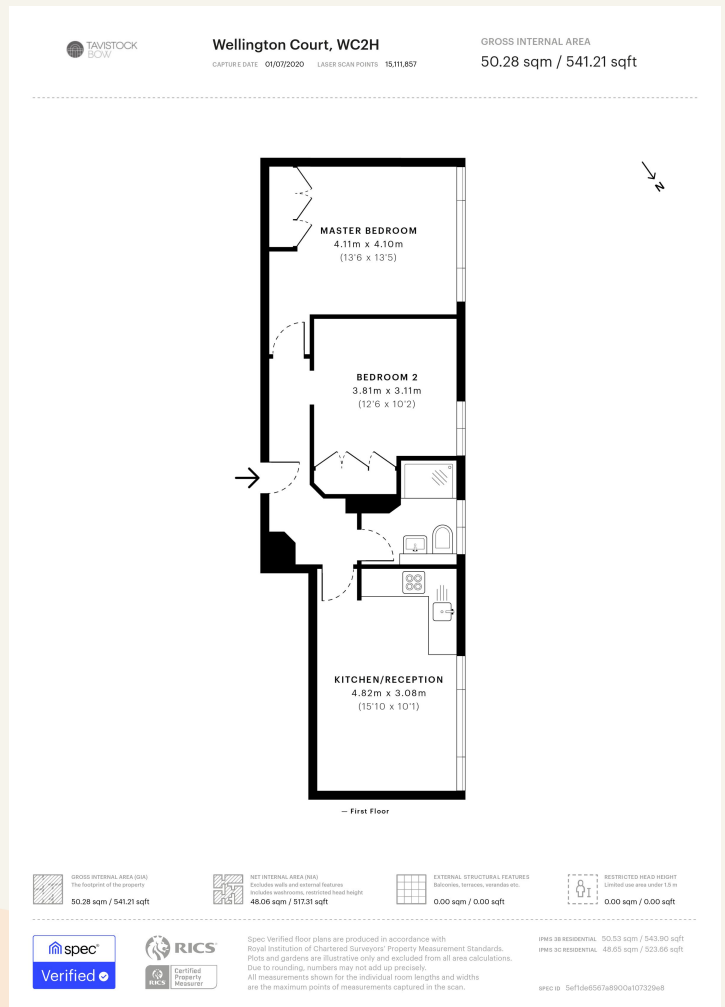
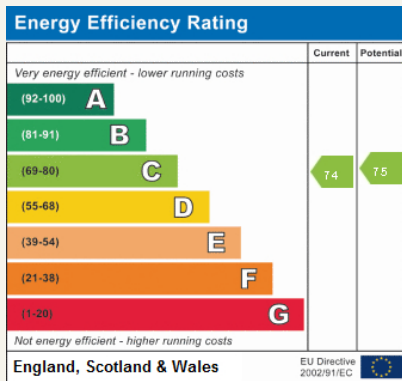
We work with both property owners and their occupiers, sharing the story of these vibrant neighbourhoods, conveying the unique soul & energy to future custodians, the people who'll keep them buzzing.

And unlike many real estate businesses we're not just about buildings, because streets & buildings don't make a neighbourhood.

We're about building relationships, because **people make places**.

MISINTERPRETATION ACT (COPYRIGHT) DISCLAIMER: Tavistock Bow Ltd for themselves and for the vendor(s) of this property whose agents they are, given notice that: 1. These particulars do not constitute, not constitute any part of, an offer or contract. 2. None of the statements contained in these particulars as to the property are to be relied on as statements or representations of fact. 3. Any intending purchaser or lessee must satisfy themselves by inspection or otherwise as to the correctness of each of the statements contained in these particulars. 4. The vendor(s) or lessor(s) do not make or give and neither Tavistock Bow Ltd nor any person in their employment has any authority to make or give any representation or warranty whatever in relation to this property. Finance Act 1989, Unless otherwise stated all prices and rents are quote exclusive of VAT. Property Misrepresentation Act 1991. These details are believed to be correct at the time of compilation but may be subject to subsequent amendment.

Follow us:     @tavistockbow



tavistockbow

21 New Row, Covent Garden,
London, WC2N 4LE

t: 020 7477 2177
 e: hello@tavistockbow.com
 w: tavistockbow.com



Shelton Street, Covent Garden WC2