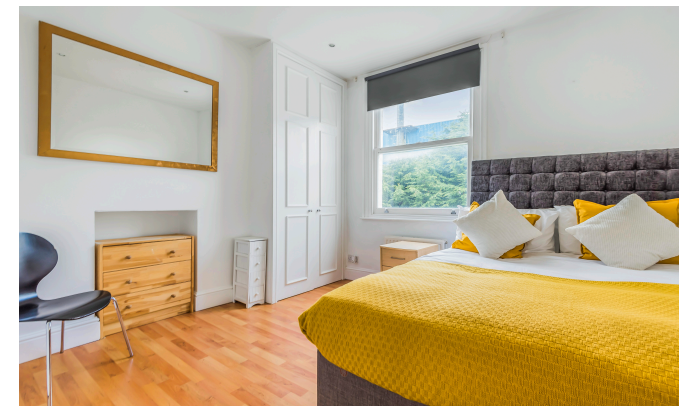




INTERLET

LOFTUS ROAD, SHEPHERDS BUSH, LONDON, W12
£1,350 PW



A fantastic, fully furnished six-bedroom, four-bathroom maisonette with terrace balcony on the tree-lined Loftus Road, London W12. The property offers a comfortable living area with large bay windows and large eat-in kitchen diner. All bedrooms contain double beds, with two boasting en-suite bathrooms. The property has a large 65" flat screen television in the living area and two large sofas, making it the perfect space for both relaxing and entertaining. With contemporary furnishings, central heating and wooden flooring throughout, this property is ideal for a family or group of friends (young professionals and/or students welcomed). Loftus Road is just a couple of minutes' walk from the Shepherd's Bush Market Underground Station which is well served by the Circle, District, and Hammersmith & City Lines. Shepherd's Bush Underground Station (Central Line & London Overground) is also nearby and provides an easy connection to the City of London and neighbouring boroughs. The property also benefits from being just moments away from the wide range of amenities found along Uxbridge Road, including newsagents, supermarkets, takeaways, cafes, shops, restaurants, pubs, and more. The splendid Shepherd's Bush Common and Westfield London Shopping Centre are also within walking distance.[...]

lettings@interlet.com
+44(0)20 7795 6525
www.interlet.com

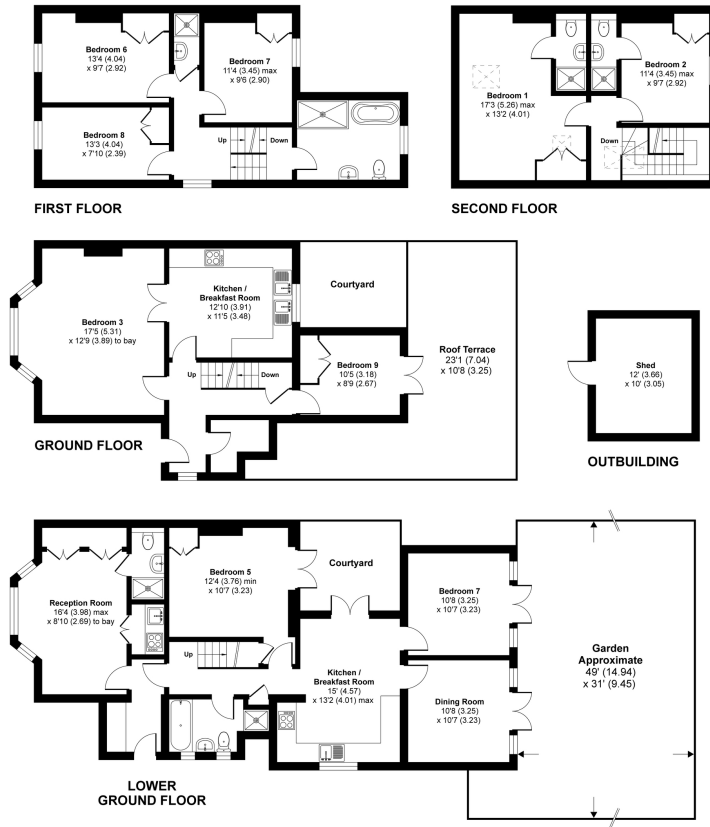
Loftus Road, London, W12

Approximate Area = 2622 sq ft / 244 sq m

Outbuilding = 120 sq ft / 11 sq m

Total = 2742 sq ft / 255 sq m

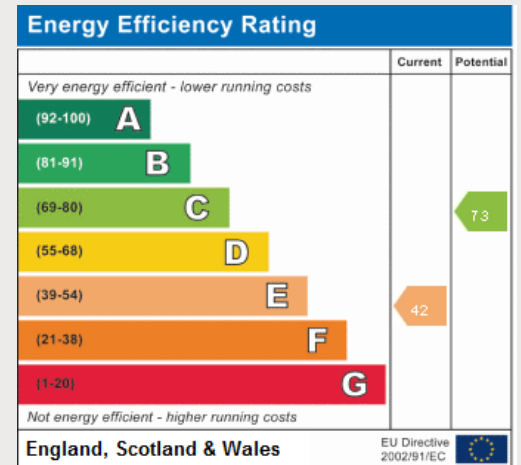
For identification only - Not to scale



Floor plan produced in accordance with RICS Property Measurement Standards incorporating International Property Measurement Standards (IPMS2 Residential). © richcom 2021. Produced for Interlet Estates Ltd. REF: 686864

Important Notice

Interlet and their clients give notice that: 1) They are not authorised to make or give any representations or warranties in relation to the property, either here or elsewhere. The particulars do not form part of any offer or contract and must not be relied upon as statements or representations of fact. 2) Any areas, measurements, and distances are approximate. The text, images, and plans are for guidance only and are not necessarily comprehensive. It should not be assumed that the property has all necessary planning, building regulation, or other contents. Interlet has not tested any services, equipment, or facilities. Prospective tenants must satisfy themselves by inspection or otherwise. Please note that the local area may be affected by aircraft noise, you should make your own inquiries regarding any noise in the area before you make an offer.



iNTERLET
SALES & LETTINGS

Welcome home.