



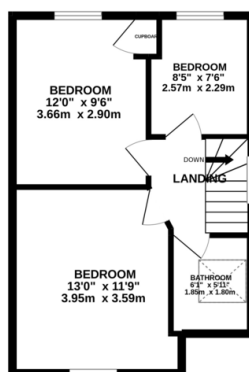
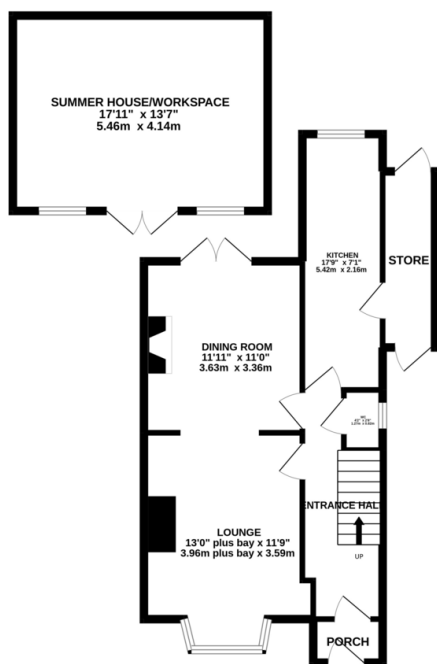
Property Summary

*** No Chain *** Extended semi detached family home with summerhouse in the rear garden which could provide an ideal home working space. The accommodation comprises porch, entrance hall, lounge, dining room, extended kitchen, downstairs w.c., tore/utility room, three bedrooms, bathroom, off road parking and large rear garden. Call to view today!

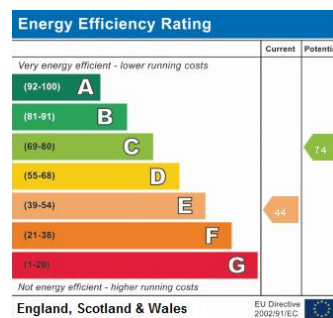


GROUND FLOOR
759 sq.ft. (70.5 sq.m.) approx.

1ST FLOOR
399 sq.ft. (37.1 sq.m.) approx.



TOTAL FLOOR AREA : 1159 sq.ft. (107.7 sq.m.) approx.
Whilst every attempt has been made to ensure the accuracy of the floorplan contained here, measurements of doors, windows, rooms and any other items are approximate and no responsibility is taken for any error, omission or mis-statement. This plan is for illustrative purposes only and should be used as such for any prospective purchaser. The services, systems and appliances shown have not been tested and no guarantee as to their specificity or efficiency can be given.
Made with Metagaze 02022



- No Chain
- Semi Detached
- Large Rear Garden
- Summerhouse
- Three Bedrooms
- Extended Kitchen
- Downstairs W.C.
- Off Road Parking

phillips george | sales & lettings

Agents Note: Whilst every care has been taken to prepare these sales particulars, they are for guidance purposes only. All measurements are approximate and for general guidance purposes only and whilst every care has been taken to ensure their accuracy, they should not be relied upon and potential buyers are advised to recheck the measurements

46 Long Street, Wigston, Leicestershire, LE18 2AH

info@phillipsgeorge.co.uk
0116 216 8178

