



Lexham House, 45 - 53 Lexham Gardens, London, W8 5JT

Asking Price Of: £1,200,000



Recently renovated | Access to Lexham Gardens | South Facing | Lift Access | Day Porter | Large Reception |

DESCRIPTION

This bright and spacious property has recently been renovated throughout. Both bedrooms benefit from a view of the beautiful Lexham Gardens Square and the apartment is filled with Natural light. This purpose built bloc comes with a day porter and lift access to all floors.

The Building is located between High street Kensington Gloucester Road, with easy access to the fantastic shops, cafes and restaurants based in these locations.

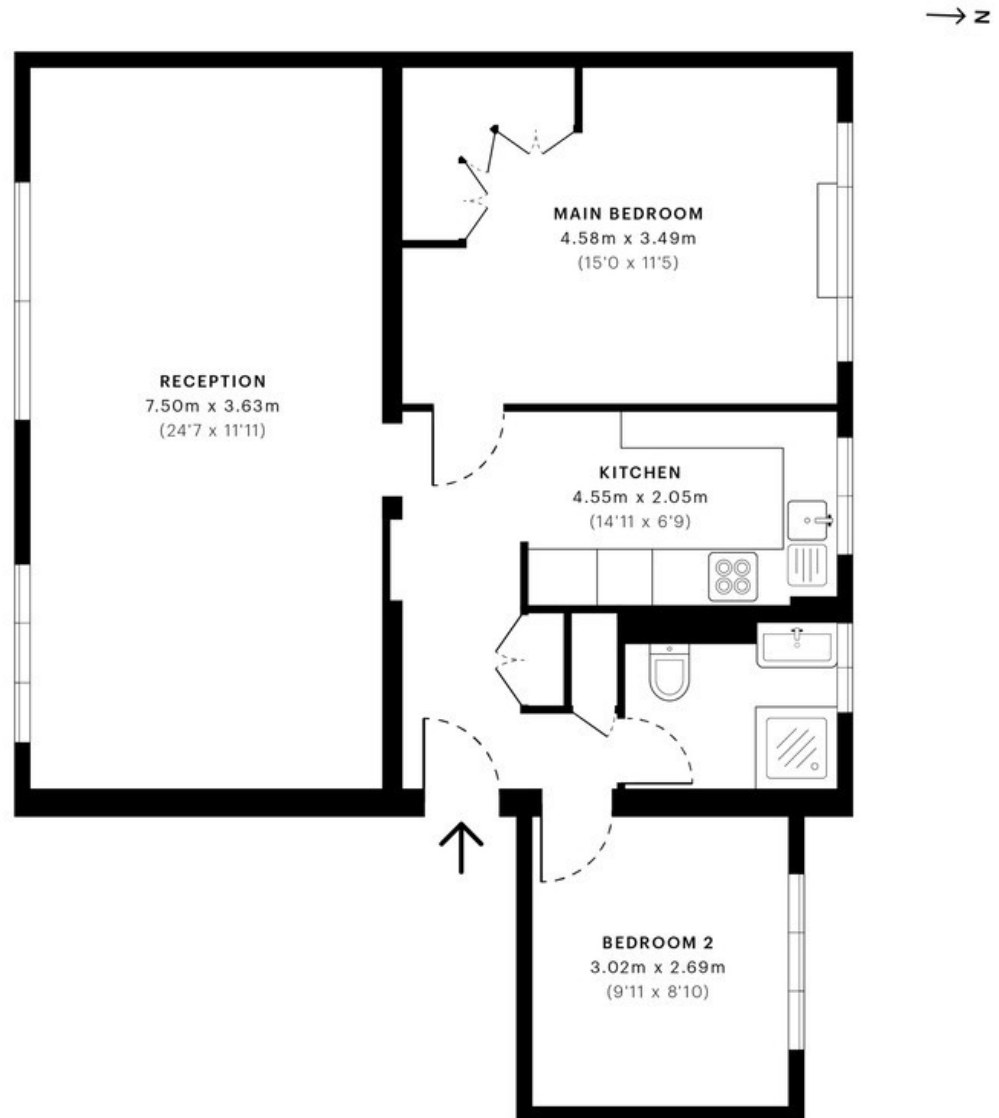
KEY FEATURES

- Recently renovated
- Access to Garden Square
- South Facing
- Lift Access
- Day Porter
- Large Reception









ADDITIONAL INFORMATION

Tenure: Leasehold

Local Authority: Kensington and Chelsea Royal

Borough Council