



Chatsworth Court

PEMBROKE ROAD, KENSINGTON W8



Chatsworth Court

PEMBROKE ROAD, KENSINGTON W8

A superb studio flat ideally located within a highly sought after area of the Royal Borough. Complete with a pretty private balcony, Share of Freehold title, lift, porter and communal gardens, this property is part of a well maintained apartment building. This beautiful property is in excellent condition throughout having been fully refurbished including a stylish new bathroom and contemporary kitchen area making it the perfect city home, pied a terre or long term investment. Chatsworth Court is well located in Kensington, close to the numerous transport and shopping amenities of Kensington High Street, Earls Court and the green spaces of Holland Park.

PRICE: £385,000
TENURE: SHARE OF FREEHOLD
GROSS INTERNAL AREA: 24.4 SQ M/ 263 SQ FT APPROX.
LOCAL AUTHORITY: RBKC
ENERGY RATING: C

STUDIO ROOM, BATHROOM, BALCONY, LIFT, PORTER, PARKING, COMMUNAL GARDEN.

SERVICE CHARGE: £1,900 PA APPROX INCLUDING HEATING AND HOT WATER.

MISREPRESENTATION ACT 1967. THIS BROCHURE AND THE DESCRIPTIONS AND MEASUREMENTS HEREIN DO NOT CONSTITUTE REPRESENTATION AND WHILST EVERY EFFORT HAS BEEN MADE TO ENSURE ACCURACY, THIS CANNOT BE GUARANTEED.

KENSINGTON

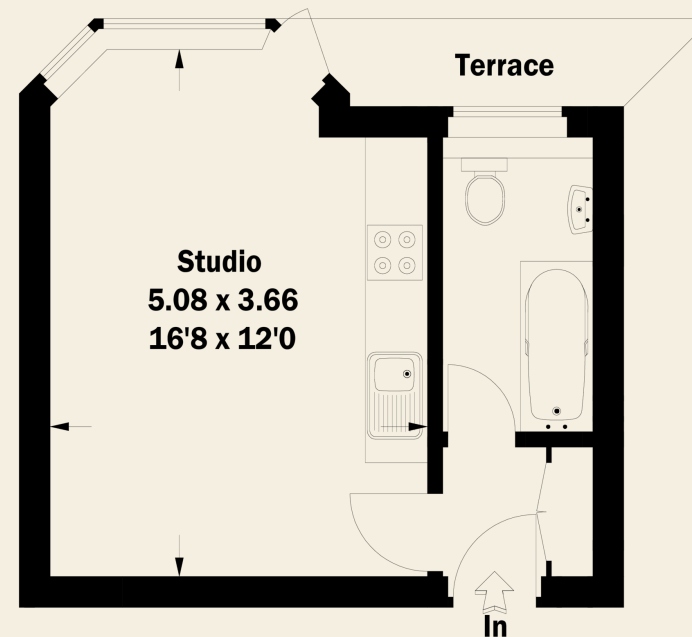
T 020 7795 4288

10 HORNTON STREET, LONDON W8 4NW

E KENSINGTON@BECTIVE.CO.UK

WWW.BECTIVE.CO.UK

Approximate Gross Internal Area
24.4 sq m / 263 sq ft



Third Floor

BECTIVE
- LESLIE MARSH -