



**3A Ridgeway, Peterborough**  
Peterborough



Offers Over **£450,000**



## 3a Ridgeway

Peterborough, Peterborough

### WOW LOOK NO FURTHER ###

Located in the beautiful area of Ridgeway, Stanground is this uniquely designed detached bungalow which features Two Kitchens, two sitting rooms, three bathrooms including an ensuite and Three bedrooms.

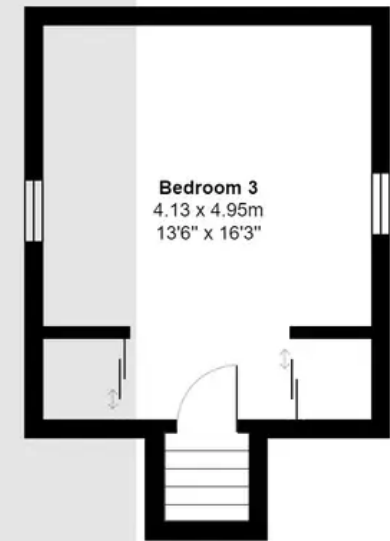
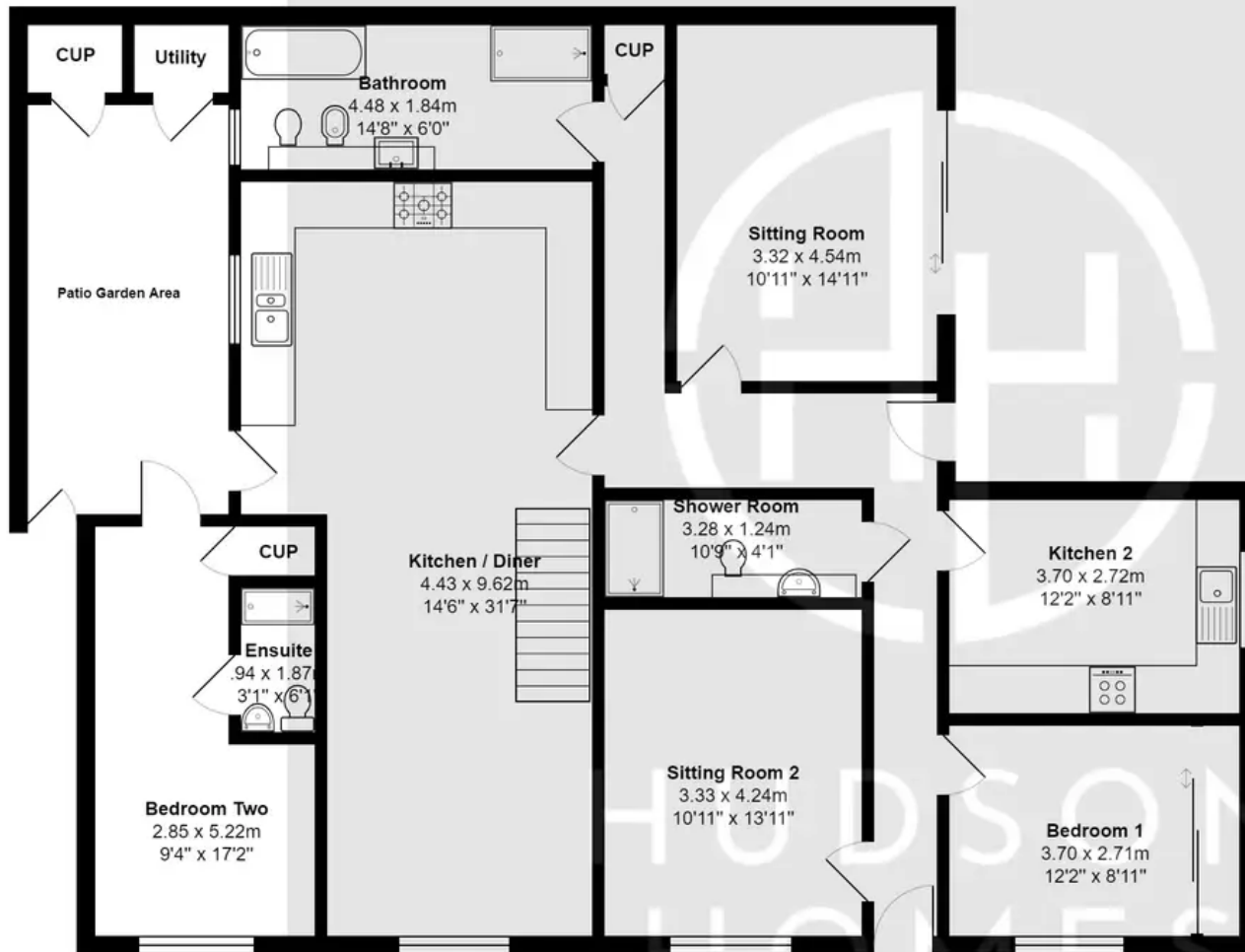
VIEWINGS ARE A MUST TO FULLY APPRECIATE EVERYTHING THIS PROPERTY HAS TO OFFER.

The property is entered to the front aspect into a spacious hallway with access to a double bedroom on the right hand side, with a fitted wardrobe space. There is a sitting room situated to the left hand side, This room could easily lend itself as an additional bedroom.

Further along the hallway and situated on the right is kitchen number two, fitted with a range of base and wall units. Adjacent to this is a three piece shower room with walk in shower. Continuing on from the hallway which leads to three further rooms, the first on the right is the second sitting room with sliding doors leading out to the garden, A beautifully fitted five piece bathroom suite and the second Kitchen with Dining room. Within the dining area is stairs to an attic bedroom. Door leading to the undercover patio garden area with two storage cupboards allowing for both a washing machine and tumble dryer to be stored. Further more it allows access to both the side of the property and the last room of the house. Formally a garage, this room has been converted into a lovely bedroom with its own ensuite, a sitting area and a storage cupboard.







**First Floor**

**Ground Floor**

Total Area: 173.4 m<sup>2</sup> ... 1867 ft<sup>2</sup>

All measurements are approximate and for display purposes only



## Hudson Homes Estate Agents

122A Main Street, Yaxley - PE7 3LP

01733 788222

[info@hudson-homes.co.uk](mailto:info@hudson-homes.co.uk)

[www.hudson-homes.co.uk/](http://www.hudson-homes.co.uk/)

