



22 Twynham Road, Maidenhead, Berkshire SL6 5AS

**22 TWYNHAM ROAD
MAIDENHEAD
BERKSHIRE SL6 5AS**

**GUIDE PRICE: £1,195,000
FREEHOLD**

An opportunity to acquire this stunning five bedroom, four bath/shower room (three en-suite) detached family house situated in this sought after residential road within catchment of Newlands School for Girls and acres of National Trust Land at Maidenhead Thicket. The property has been extended and refurbished in recent years, in our opinion, to a high level of finish and specification including a generous L-shape kitchen/family room opening into a large dining area and direct access out onto the large west facing rear garden and an internal inspection is most strongly recommended of this property which is offered for sale with NO ONWARD CHAIN.

***ENTRANCE HALL *CLOAKROOM *LIVING ROOM *HOME OFFICE/PLAYROOM *KITCHEN/FAMILY ROOM OPENING INTO THE DINING ROOM *MASTER BEDROOM WITH EN-SUITE BATH/SHOWER ROOM *GUEST BEDROOM WITH EN-SUITE SHOWER ROOM *ADDITIONAL BEDROOM WITH EN_SUITE *TWO FURTHER BEDROOMS *FAMILY BATHROOM * *GENEROUS REAR GARDEN *DRIVEWAY PARKING *SOUGHT-AFTER RESIDENTIAL ROAD *NO ONWARD CHAIN *EPC RATING B**

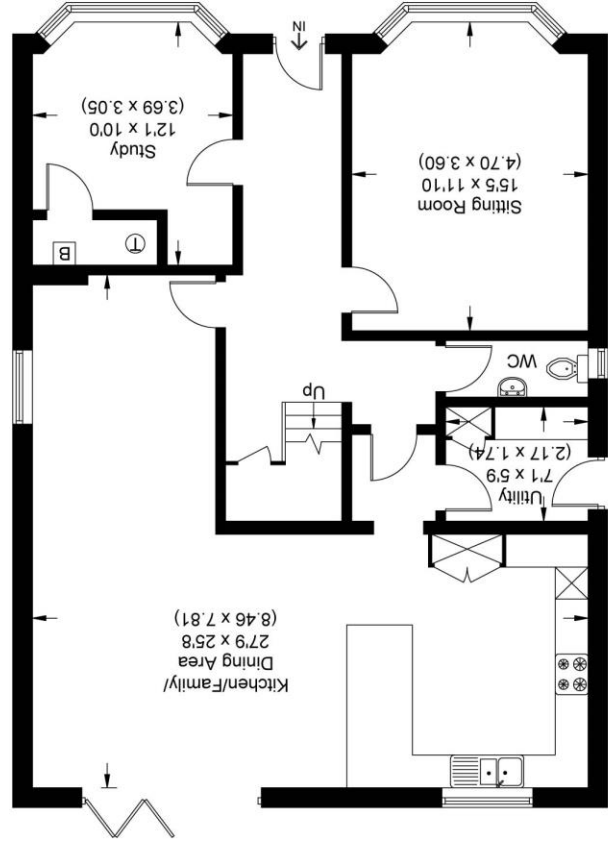




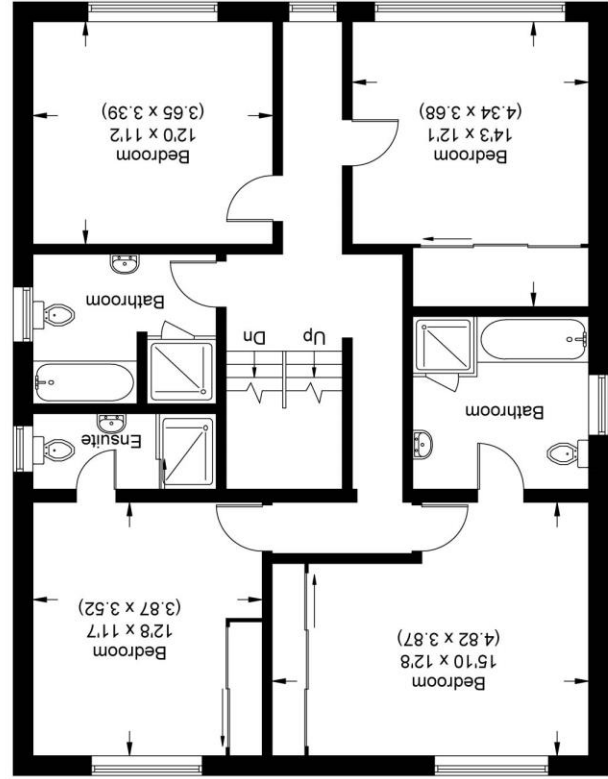
For clarification we wish to inform prospective purchasers that we have prepared these sales particulars as a general guide. We have not carried out a detailed survey nor tested the services, appliances and specific fittings. Room sizes should not be relied upon for carpets, furnishings and appliances. Whilst these particulars are believed to be correct their accuracy is not guaranteed and are given without responsibility. They do not form part of any contract.

Illustration for identification purposes only, measurements are approximate, not to scale.

Ground Floor



First Floor



Second Floor

