



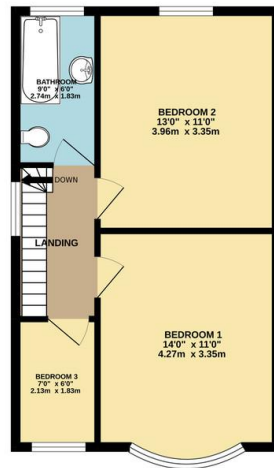
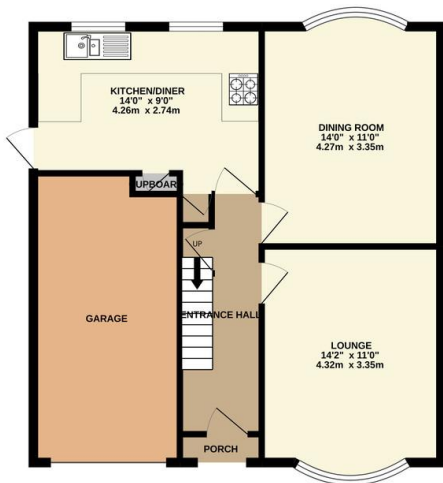
Property Summary

*** No Chain *** Neatly presented and extended three bedroom detached house is presently situated in the popular location of The Mere's, Wigston. The accommodation comprises of main entrance hall, lounge, dining room, extended refitted kitchen landing to three bedrooms and bathroom, front and rear landscaped gardens, off-road parking and garage. Internal inspection comes highly recommended.

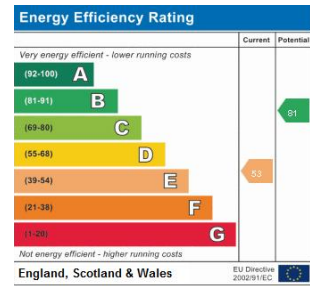


GROUND FLOOR
673 sq.ft. (62.5 sq.m.) approx.

1ST FLOOR
430 sq.ft. (40.0 sq.m.) approx.



TOTAL FLOOR AREA: 1103 sq.ft. (102.5 sq.m.) approx.
Whilst every attempt has been made to ensure the accuracy of the floorplan contained here, measurements of doors, windows, rooms and any other items are approximate and no responsibility is taken for any error, omission or mis-statement. This plan is for illustrative purposes only and should be used as such by any prospective purchaser. The services, systems and appliances shown have not been tested and no guarantee as to their operability or efficiency can be given.
Made with Metropix 10/2022



Address:
Mere Road, Wigston

- No Chain
- Detached
- Great School Catchment
- Neatly Presented
- Extended Kitchen
- Highly Sought After Location
- Three Bedrooms
- Landscaped Gardens

phillips george | sales & lettings

Agents Note: Whilst every care has been taken to prepare these sales particulars, they are for guidance purposes only. All measurements are approximate and for general guidance purposes only and whilst every care has been taken to ensure their accuracy, they should not be relied upon and potential buyers are advised to recheck the measurements

46 Long Street, Wigston, Leicestershire, LE18 2AH

info@phillipsgeorge.co.uk
0116 216 8178

