

CARNABY  
LOFTS



| *tavistockbow*

# CARNABY LOFTS

**A boutique collection of 15 newly developed 1 & 2 bedroom purpose-built loft apartments in the heart of Carnaby, one of London's most vibrant & exciting neighbourhoods**

This brand new development of 15 one & two bedroom furnished loft apartments is perfectly positioned in the heart of London's West End, all featuring panoramic views over either world famous Carnaby Street, vibrant Soho or towards the City of London taking in St. Paul's Cathedral and the London Eye.

Every apartment benefits from it's own private balcony, as well as access to a tranquil communal roof garden planted with flowers, herbs and a green living wall. The building has a private resident's entrance and is served by a weekday concierge

Sizes range from 538 sq ft to 1066 sq ft, with generous ceiling heights, enhanced natural light, and high spec finishes. Each individually designed apartment features well considered sustainable furnishing from Soho Home and Dodds & Shute, finished in a subtle & calming Farrow and Ball colour palette.



*tavistockbow*



CARNABY  
LOFTS



Each & every apartment has it's own private terrace with views over London's West End, plus residents have exclusive access to a tranquil roof garden featuring seasonal planters, herbs and a living wall.

CARNABY  
LOFTS

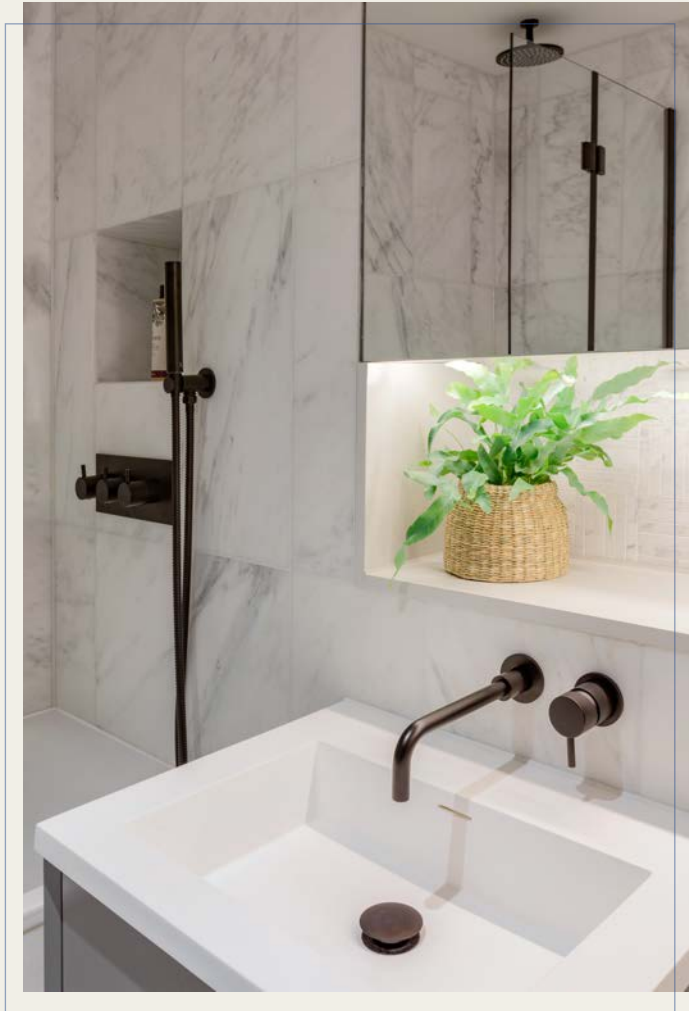


CARNABY  
LOFTS



Design-led procurement company Dodds & Shute assisted the team in sourcing sustainable furniture and materials, with a focus on UK producers.

CARNABY  
LOFTS



CARNABY  
LOFTS



Each apartment is thoughtfully furnished with a considered mix of pieces handpicked for their quality, durability and sustainable credentials, with Soho Home, Tradition and Menu among the brands chosen.

CARNABY  
LOFTS



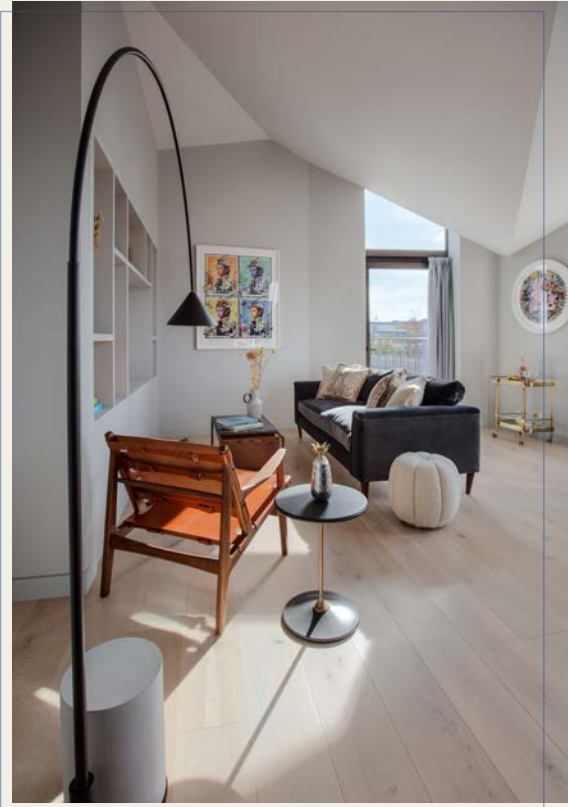


CARNABY  
LOFTS



All 15 apartments feature sofas and beds from Soho Home , designed and manufactured in England and chosen for their comfort and style.

CARNABY  
LOFTS



CARNABY  
LOFTS



All kitchens are equipped with high quality integrated Bosch appliances and furnished with a mix of Soho Home and other reputable sustainable, handmade brands.

Featured products include bespoke Lozi bedside tables, Fresso dining tables, organic and sustainable mattresses handmade in Devon, responsibly sourced timber flooring and LED lighting throughout.

CARNABY  
LOFTS



CARNABY  
LOFTS



All apartments are individually designed and come with ample storage.

CARNABY  
LOFTS



CARNABY  
LOFTS



CARNABY  
LOFTS





CARNABY  
LOFTS



Bathrooms are fitted to a high specification with contemporary fittings and classic finishes.

CARNABY  
LOFTS



CARNABY  
LOFTS

- Artworks from award winning artist Kristjana S Williams artwork will be featured in the communal areas.
- All apartments feature private terraces plus access to a tranquil roof garden
- Weekday concierge
- Secure cycle Storage facility
- Post room/Storage for deliveries
- Private residential lift to the 5th floor
- G Network superfast fibre broadband included
- Floor to ceiling windows in all apartments enhancing natural light and sense of space & volume



CARNABY  
LOFTS

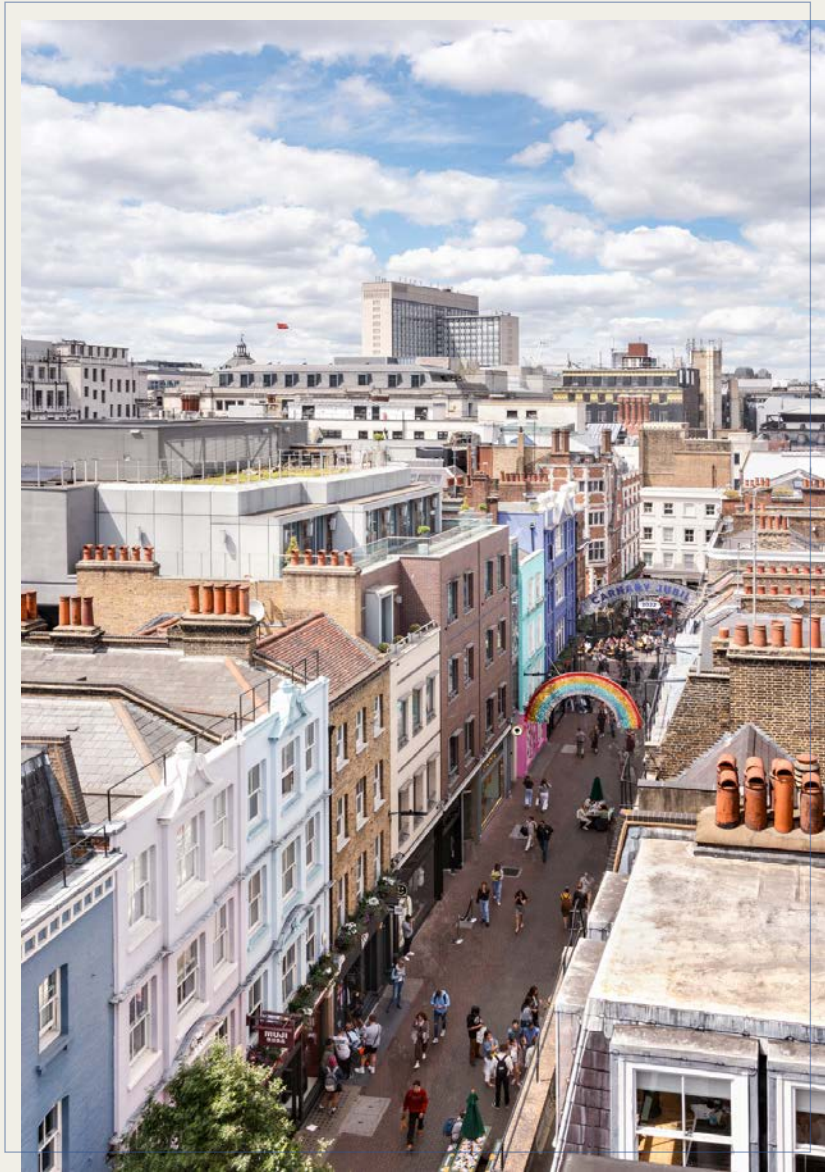


Services available to residents include weekday concierge, on-site secure cycle storage, superfast fibre broadband and floor to ceiling windows filling the spaces with natural light.

CARNABY  
LOFTS



CARNABY  
LOFTS



CARNABY  
LOFTS

# floorplans

## 1 bedroom apartments

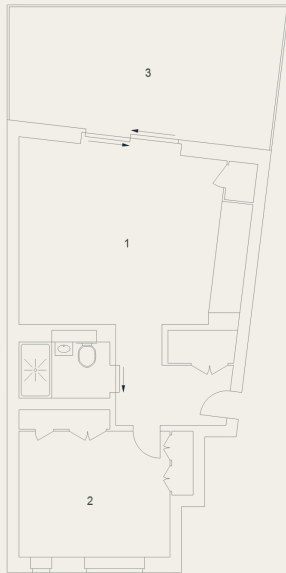
Approximate Gross Internal Area 57 sq m / 614 sq ft

Fifth Floor

1 Kitchen /  
Reception Room  
5.90 x 4.83M  
19'4" x 15'10"

2 Bedroom  
4.49 x 3.80M  
14'9" x 12'6"

3 Terrace



apartment 1

Approximate Gross Internal Area 59 sq m / 635 sq ft

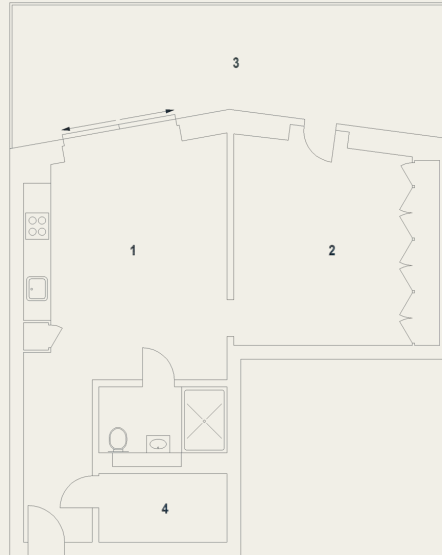
Fifth Floor

1 Kitchen /  
Reception Room  
5.42 x 4.45M  
17'9" x 14'7"

2 Bedroom  
4.63 x 4.52M  
15'2" x 14'10"

3 Terrace

4 Utility



apartment 3

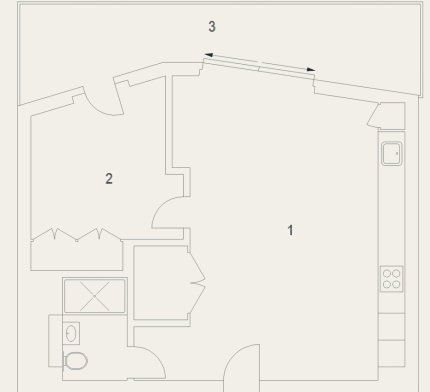
Approximate Gross Internal Area 53 sq m / 571 sq ft

Fifth Floor

1 Kitchen /  
Reception Room  
6.78 x 4.82M  
22'3" x 15'10"

2 Bedroom  
3.64 x 3.38M  
11'11" x 11'11"

3 Terrace



apartment 4



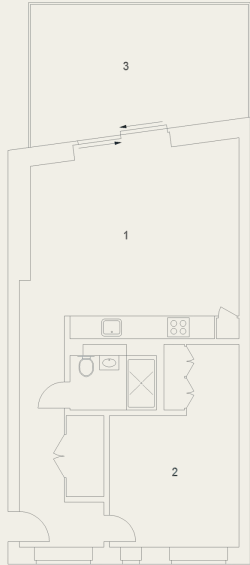
# floorplans

## 1 bedroom apartments

Approximate Gross Internal Area 62 sq m / 667 sq ft

Fifth Floor

- 1 Kitchen / Reception Room  
5.84 x 5.42M  
19'2" x 17'9"
- 2 Bedroom  
5.38 x 3.43M  
17'8" x 11'3"
- 3 Terrace

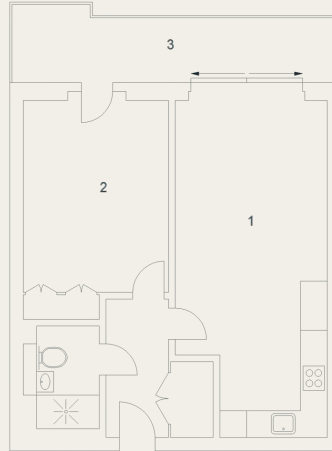


apartment 5

Approximate Gross Internal Area 51 sq m / 549 sq ft

Fifth Floor

- 1 Kitchen / Reception Room  
7.57 x 3.42M  
24'10" x 11'3"
- 2 Bedroom  
4.50 x 3.24M  
14'9" x 10'8"
- 3 Terrace

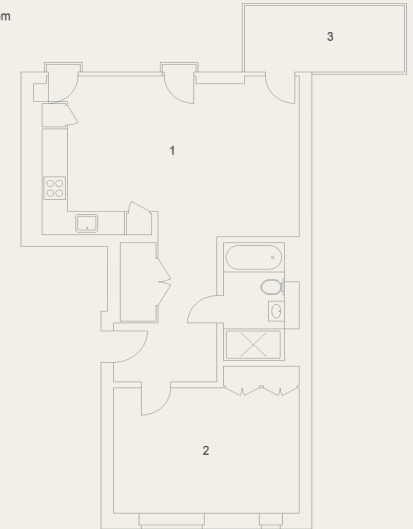


apartment 9

Approximate Gross Internal Area 55 sq m / 592 sq ft

Fifth Floor

- 1 Kitchen / Reception Room  
6.09 x 4.04M  
20' x 13'3"
- 2 Bedroom  
4.39 x 3.51M  
14'5" x 11'6"
- 3 Terrace



apartment 12

# floorplans

## 1 bedroom apartments

Ganton Street, W1

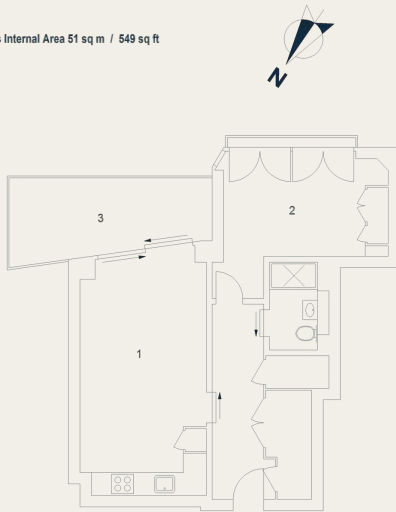
Approximate Gross Internal Area 51 sq m / 549 sq ft

Fifth Floor

1 Kitchen /  
Reception Room  
6.37 x 3.30M  
20'11" x 10'10"

2 Bedroom  
4.29 x 2.86M  
14'1" x 9'5"

3 Terrace



apartment 13

Ganton Street, W1

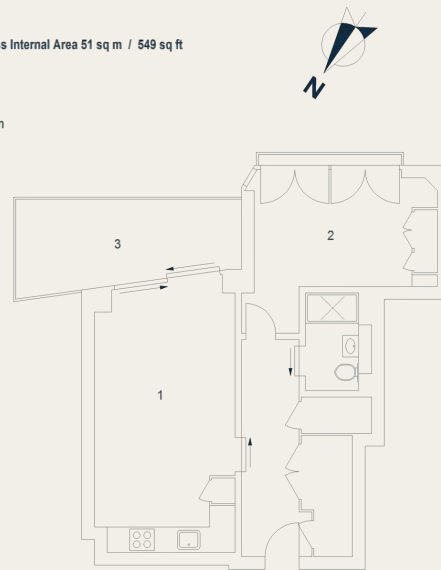
Approximate Gross Internal Area 51 sq m / 549 sq ft

Fifth Floor

1 Kitchen /  
Reception Room  
6.37 x 3.30M  
20'11" x 10'10"

2 Bedroom  
4.29 x 2.86M  
14'1" x 9'5"

3 Terrace



apartment 14

Ganton Street, W1

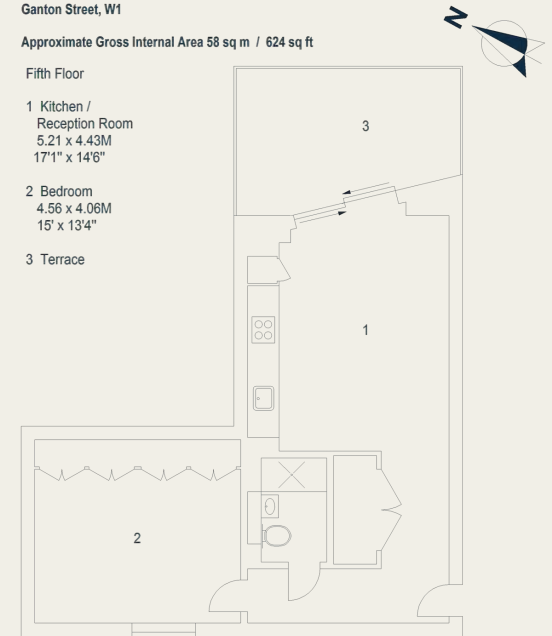
Approximate Gross Internal Area 58 sq m / 624 sq ft

Fifth Floor

1 Kitchen /  
Reception Room  
5.21 x 4.43M  
17'1" x 14'6"

2 Bedroom  
4.56 x 4.06M  
15' x 13'4"

3 Terrace



apartment 15

# floorplans

## 2 bedroom apartments

Ganton Street, W1

Approximate Gross Internal Area 78 sq m / 840 sq ft

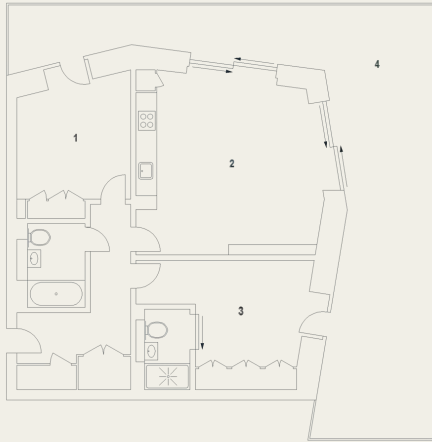
Fifth Floor

1 Bedroom  
3.45 x 3.29M  
11'4" x 10'10"

2 Kitchen/  
Reception  
Room  
5.92 x 5.21M  
19'5" x 17'1"

3 Bedroom  
5.11 x 3.69M  
16'9" x 12'1"

4 Terrace



apartment 2

Ganton Street, W1

Approximate Gross Internal Area 102 sq m / 1098 sq ft

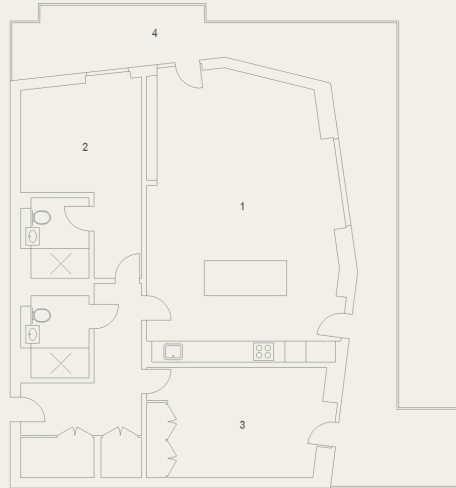
Fifth Floor

1 Kitchen /  
Reception Room  
8.40 x 5.50M  
27'7" x 18'1"

2 Bedroom  
5.77 x 3.44M  
18'11" x 11'4"

3 Bedroom  
3.92 x 3.19M  
12'10" x 10'6"

4 Terrace



apartment 6

Ganton Street, W1

Approximate Gross Internal Area 80 sq m / 861 sq ft

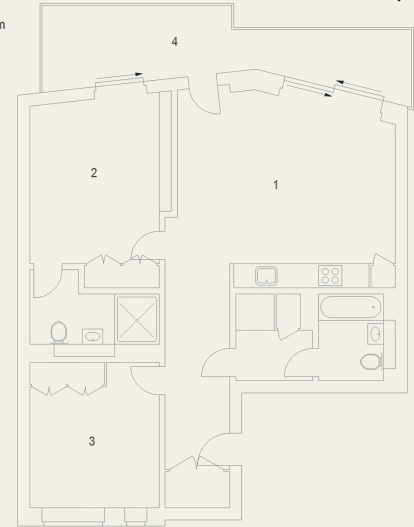
Fifth Floor

1 Kitchen /  
Reception Room  
5.72 x 4.84M  
18'9" x 15'11"

2 Bedroom  
4.87 x 3.19M  
16' x 10'6"

3 Bedroom  
3.92 x 3.19M  
12'10" x 10'6"

4 Terrace



apartment 7

# floorplans

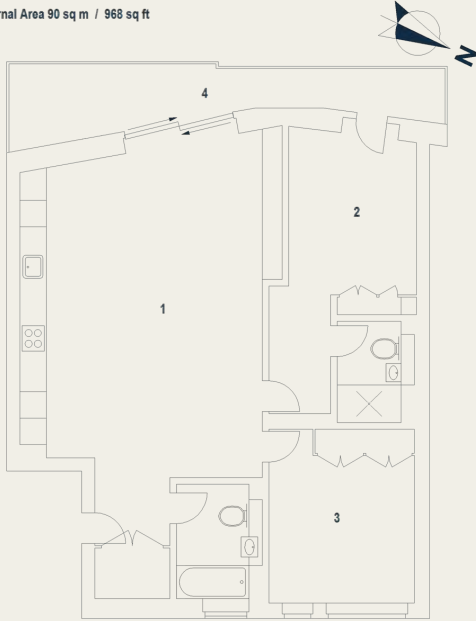
## 2 bedroom apartments

Ganton Street, W1

Approximate Gross Internal Area 90 sq m / 968 sq ft

Fifth Floor

- 1 Kitchen / Reception Room  
7.89 x 5.94M  
25'11" x 19'6"
- 2 Bedroom  
3.44 x 2.91M  
11'4" x 9'7"
- 3 Bedroom  
4.21 x 3.35M  
13'10" x 11'
- 4 Terrace



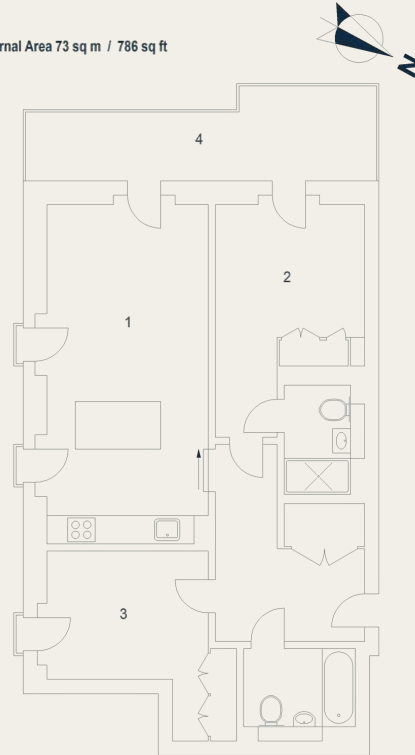
apartment 8

Ganton Street, W1

Approximate Gross Internal Area 73 sq m / 786 sq ft

Fifth Floor

- 1 Kitchen / Reception Room  
7.36 x 3.63M  
24'2" x 11'11"
- 2 Bedroom  
4.91 x 3.13M  
16'1" x 10'3"
- 3 Bedroom  
3.62 x 2.69M  
11'11" x 8'10"
- 4 Terrace



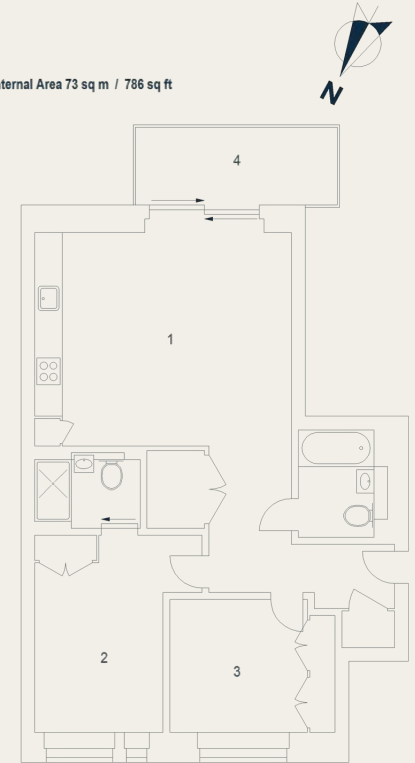
apartment 10

Ganton Street, W1

Approximate Gross Internal Area 73 sq m / 786 sq ft

Fifth Floor

- 1 Kitchen / Reception Room  
5.54 x 4.64M  
18'2" x 15'3"
- 2 Bedroom  
4.28 x 2.78M  
14'1" x 9'1"
- 3 Bedroom  
3.61 x 2.90M  
11'10" x 9'6"
- 4 Terrace



apartment 11

Carnaby is in the heart of London's West End, where over 100 retail brands of quality and distinction and over 60 independent restaurants, cafes and bars can be found across 14 streets, including the world famous Carnaby Street. Carnaby is a unique and iconic experiential shopping, dining and leisure destination.

Living in the center of Carnaby, residents are surrounded with the best line up of shops, restaurants, cafés, innovative businesses, boutiques, deli's, gyms and nightlife – so you have everything you need at your doorstep. The residential welcome pack includes a Neighbourhood Card which gives card holders 10% discount at over 100 shops, bars and restaurants in Carnaby and Soho.

Well known, independent and one-off brands and restaurants in the area include Dishoom, Nightjar, Bar Crispin, Rita's, Inko Nito, Zahter, Korean Dinner Party, The Blue Posts, Liberty, open air courtyard Kingly Court and more.



CARNABY  
LOFTS



CARNABY  
LOFTS

# *tavistockbow*

## **about us**

Tavistock Bow is an independent residential agency based in London's vibrant West End.

We are niche, boutique, creative, knowledgeable, professional and approachable.

We love what we do and that's why we do it.



21 New Row, London WC2N 4LE  
020 7477 2177  
[hello@tavistockbow.com](mailto:hello@tavistockbow.com)  
[tavistockbow.com](http://tavistockbow.com)

# GARNABY LOFTS