



Austen Drive

Tamworth, Staffordshire, B78 3BN

From £349,995

Property Features

- Located on the Sought After Dunstall Park Estate
- Entrance Hall
- Spacious Lounge
- Open Aspect Kitchen/Dining Area
- Guest Cloakroom
- Master Bedroom with En-suite
- Two Further Bedrooms
- Family Bathroom
- Rear Garden, Two Car Parking Spaces
- Available Summer 2023

Full Description

Taylor Cole Estate Agents are delighted to offer 'for sale' this attractive detached home, located on the desirable new build development of 'Dunstall Park'. Constructed by the five star house builder Barratt Homes, this wonderful new build home provides well proportioned accommodation and high specification finishing throughout, with the property itself briefly comprising: entrance hall, spacious lounge, open aspect kitchen/dining area, guest cloakroom, master bedroom with en-suite, two further bedrooms, family bathroom, rear garden and two car parking spaces.



ENTRANCE HALL

LOUNGE

16' 3" x 10' 3" (4.95m x 3.12m)

KITCHEN/DINING AREA

16' 3" x 10' 5" (4.95m x 3.18m)

GUEST CLOAKROOM

6' 4" x 3' 0" (1.93m x 0.91m)

FIRST FLOOR LANDING

BEDROOM ONE

13' 11" x 12' 9" (4.24m x 3.89m)

EN-SUITE

6' 9" x 4' 8" (2.06m x 1.42m)

BEDROOM TWO

12' 5" x 10' 4" (3.78m x 3.15m)

BEDROOM THREE

7' 4" x 6' 10" (2.24m x 2.08m)

FAMILY BATHROOM

7' 8" x 6' 4" (2.34m x 1.93m)

OUTSIDE

ALLOCATED CAR PARKING

REAR GARDEN

ANTI MONEY LAUNDERING

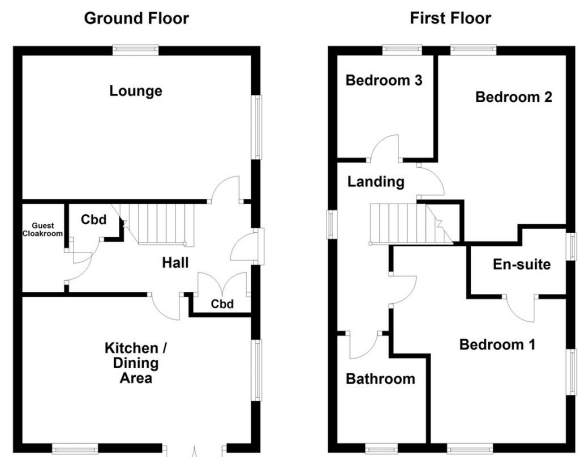
In accordance with the most recent Anti Money Laundering Legislation, buyers will be required to provide proof of identity and address once an offer has been submitted and accepted (subject to contract) prior to Solicitors being instructed.

TENURE

We have been advised that this property is freehold, however, prospective buyers are advised to verify the position with their solicitor / legal representative.

VIEWING

By prior appointment with Taylor Cole Estate Agents on the contact number provided.



6a Victoria Road
Tamworth
Staffordshire
B79 7HL

www.taylorcole.co.uk
sales@taylorcole.co.uk
01827 311412

Agents Note: Whilst every care has been taken to prepare these sales particulars, they are for guidance purposes only. All measurements are approximate are for general guidance purposes only and whilst every care has been taken to ensure their accuracy, they should not be relied upon and potential buyers are advised to recheck the measurements