

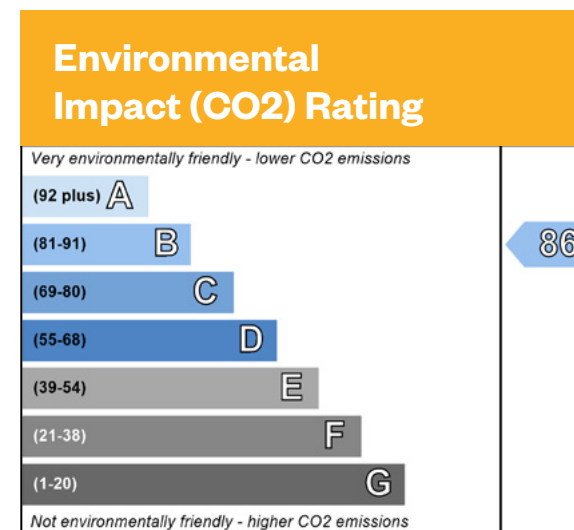
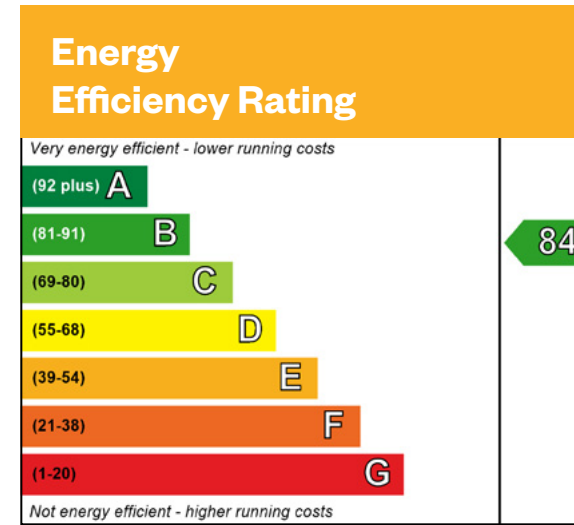
The Hulsfield

3 bedroom semi-detached or terraced home

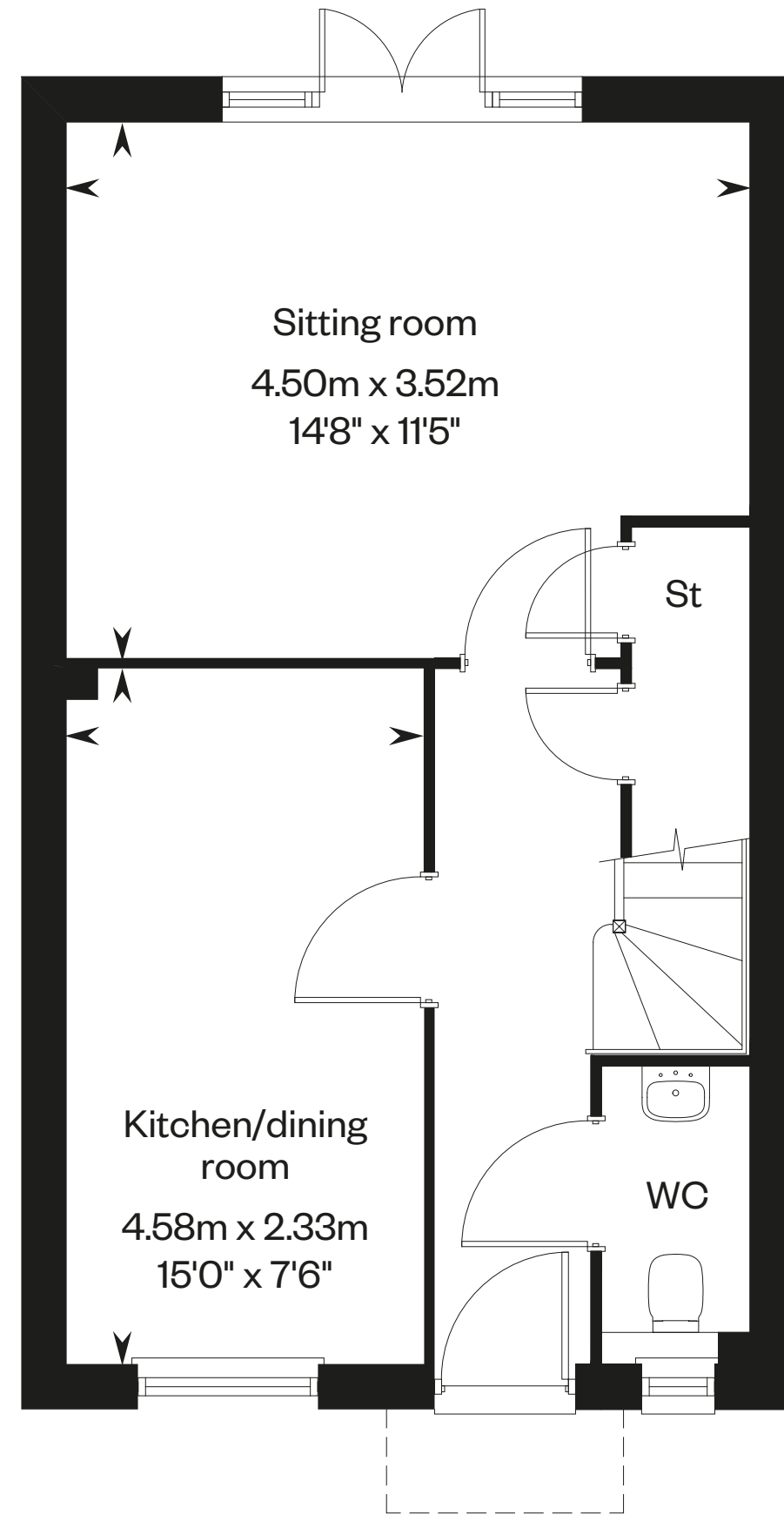


The Hulsfield

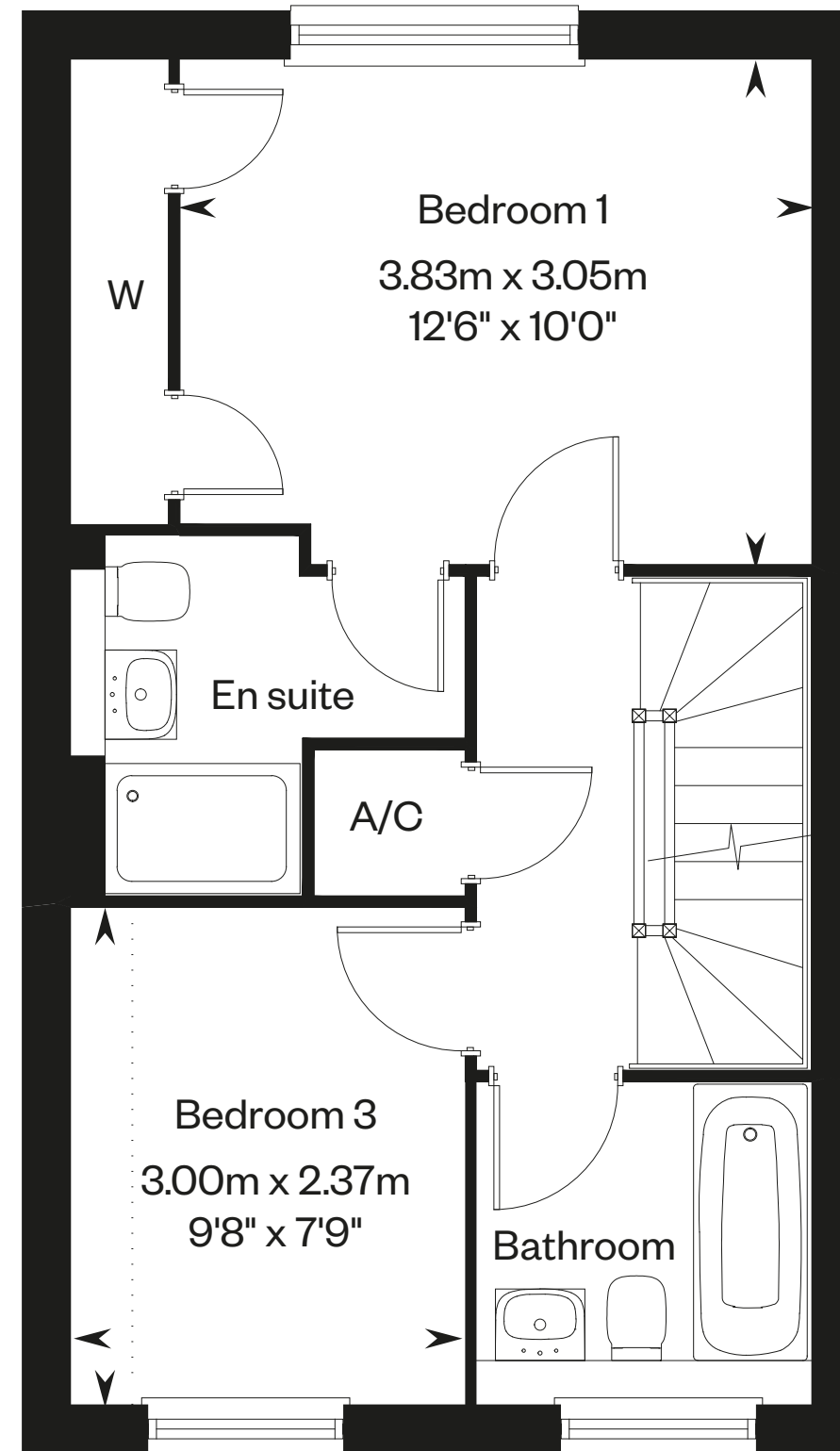
Plots 183, 189, & 191 – as shown
Plots 184, 190 & 192 – handed



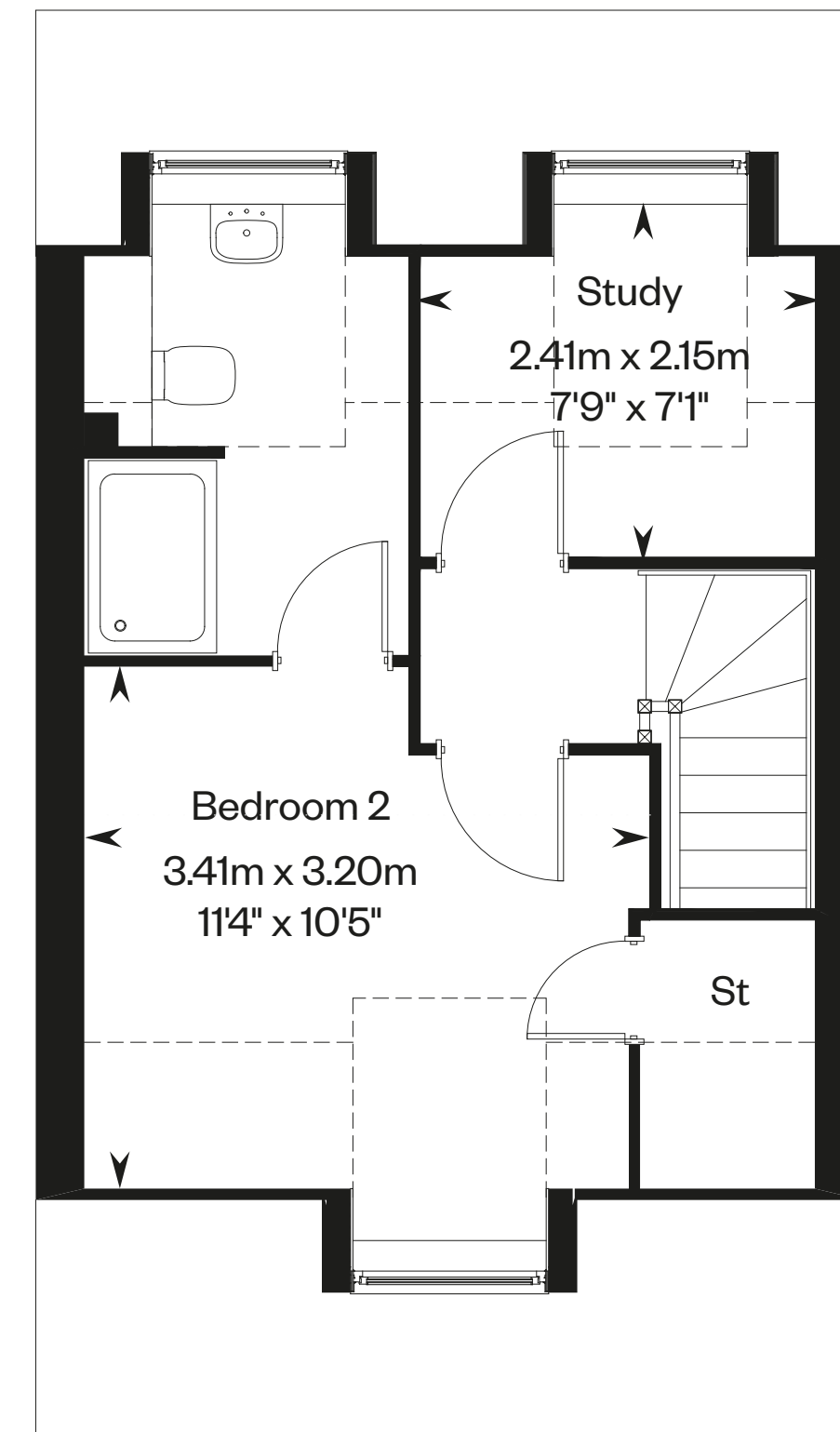
This is a Predicted Energy Assessment for properties that are incomplete. Once the property is completed, this rating will be updated and an official Energy Performance Certificate will be created for the property.



Ground floor



First floor



Second floor

Scan to view our virtual tour



Please ask your Sales Consultant for further details. A/C: Airing cupboard. St: Store cupboard. W: Wardrobe. All homes complete with solar panels fitted.

IMPORTANT NOTICE TO CUSTOMERS: The Consumer Protection from Unfair Trading Regulations 2008. Cala Homes (Midlands) Limited operates a policy of continual product development and the specifications outlined in this brochure are indicative only. The computer generated images and photographs do not necessarily represent the actual finishings/elevation or treatments, landscaping, furnishings and fittings at this development. Information contained is accurate at date of publication on 29.03.22. See the main brochure for the full Consumer Protection statement.