



Broad Court, Covent Garden, London, WC2B
£750,000

> 1 Bedroom > 1 Bathroom

TAVISTOCKBOW
RESIDENTIAL



- > One double bedroom
- > One shower room
- > Open plan kitchen reception room
- > Induction hob
- > High ceilings
- > Period sash windows
- > Air cooling
- > Wood floors
- > Good storage
- > Moments from Covent Garden tube station

An exceptionally well presented one bedroom apartment in the heart of Covent Garden, moments from the world famous Piazza and the area's many shops and restaurants. Being on the first floor this fabulous apartment has very high ceilings and has a good feeling of volume and space. The apartment has an open plan kitchen reception with two large sash windows that face onto

Long Acre. There is a good size double bedroom with lots of natural light and plentiful storage, plus the benefit of air cooling. The apartment features quality herringbone solid wood floors, white cast iron style radiators and high spec fittings and fixtures. Chambers House is beautiful period building that combines period charm and modern communal areas.

Located in the heart of the West End, the property is perfectly located to enjoy the entertainment, eateries and shopping facilities of Covent Garden Piazza as well as the Royal Opera House.





WHAT WE LOVE:

High ceilings
Large period sash windows
High quality wooden floors
Large shower room
Fantastic location.

WHAT YOU NEED TO KNOW:

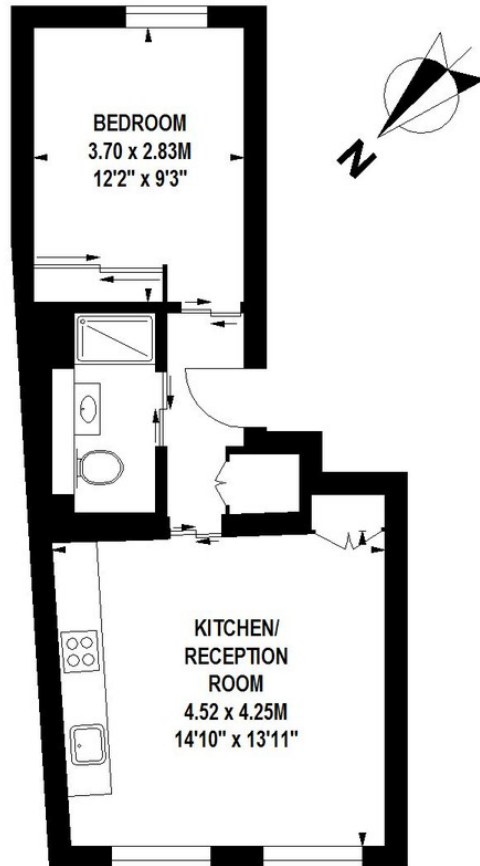
First floor
Ground rent £250 per annum
Service charge £3,000 per annum
Buildings insurance £700 per annum
989 years remaining on the lease.



Chambers House, Broad Court, WC2

Approximate gross internal area

39 sq m / 420 sq ft



First Floor


Floor Plan produced for Tavistock Bow by Mays Floorplans © . Tel 020 3397 4594
 Illustration for identification purposes only, not to scale
 All measurements are maximum, and include wardrobes and window bays where applicable


Energy Efficiency Rating		
	Current	Potential
<i>Very energy efficient - lower running costs</i>		
(92+) A		
(81-91) B		84
(69-80) C	76	
(55-68) D		
(39-54) E		


About Us

Tavistock Bow is an independent residential agency based in Covent Garden. We are niche, boutique, creative, knowledgeable, professional and approachable. We love what we do and that's why we do it.

Contact Us

- a.** 21 New Row, Covent Garden, WC2N 4LE
 - t.** 020 7477 2177
 - e.** hello@tavistockbow.com
 - w.** tavistockbow.com
-  /tavistockbow

 /tavistockbow

 @tavistockbow