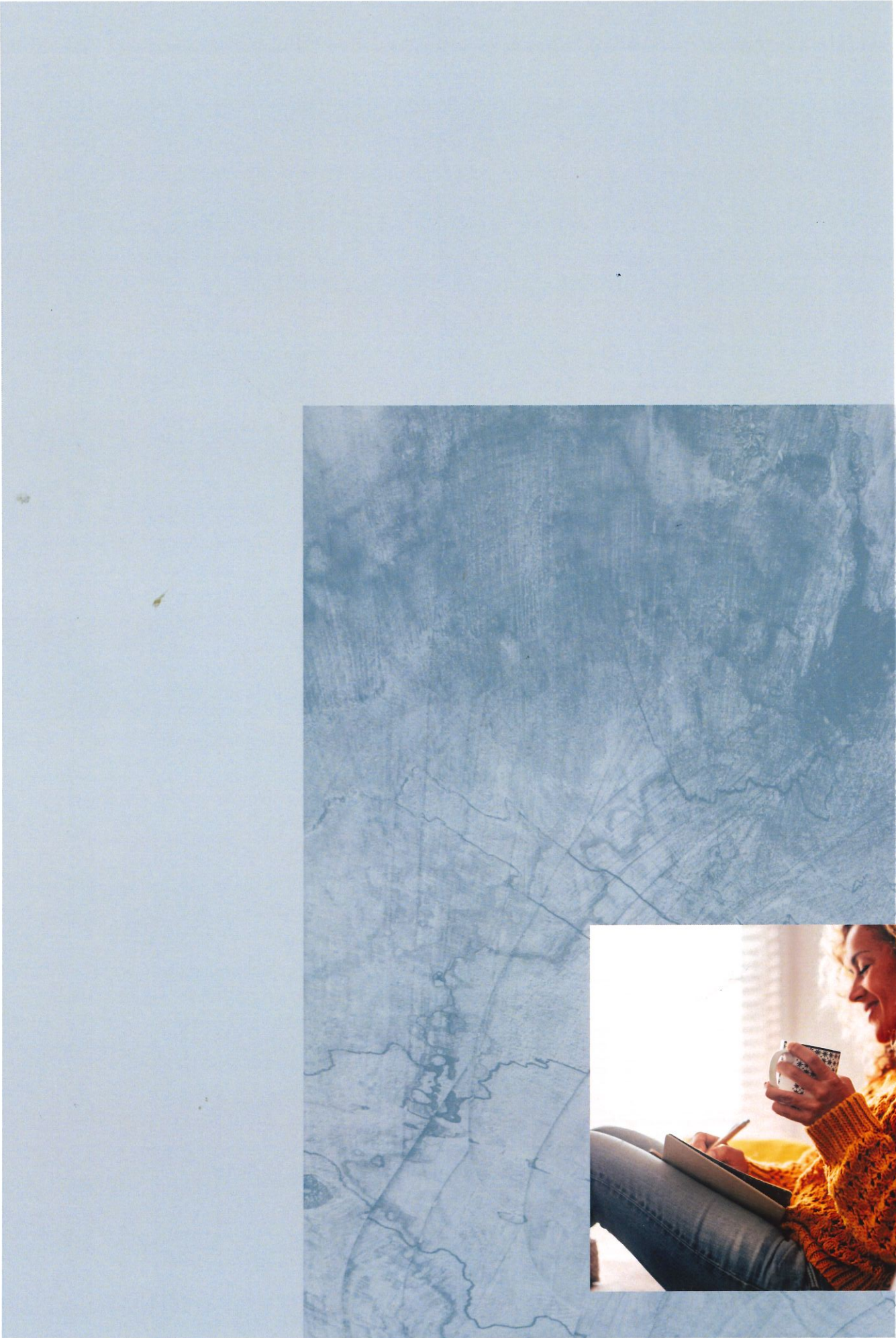


CHANDLERS HOMES

Bridgefield





Belong at HOME



Welcome to Bridgefield, a luxury development of 2, 3, 4 and 5 bedroom homes, expertly designed and lovingly built.

Located in the idyllic village of Lindal-in-Furness on the edge of the Lake District, Bridgefield offers the very best of Lakeland living with beautiful coast, breath-taking countryside, and local village amenities on your doorstep.

Welcome home.



Luxury **LAKELAND LIVING**



Designed by JMP Architects in Lancaster, this unique development of 35 homes is centred around a communal green space to prioritise the outdoors, space and togetherness.

As an independent, family-owned developer, we understand the importance of quality. Our homes use high-quality locally sourced materials to reflect the heritage and surroundings of Lindal-in-Furness and the Furness peninsula.

Bridgefield properties are designed with longevity in mind with spacious floorplans and generous outdoor areas, all set in a beautiful location with rivers, beaches, and mountains to explore.



Luxury
LAKELAND
LIVING





We're committed to the highest possible standard, with attention to the smallest details to create a beautiful home.

You'll be able to personalise your home with a choice of finishings for the contemporary bathrooms and impressive LEICHT German engineered kitchens, complete with NEFF integrated appliances.

All our properties are backed by a 10-year LABC structural warranty giving you peace of mind in your purchase.



High Quality **DESIGN**



You can expect the highest specification for your new Chandlers home with the following included as standard*

General Property Specification

General

- Living room large picture window looking out to central communal green space¹
- Air source heat pump heating system
- Fibre broadband connectivity
- White cottage style doors with chrome handles
- Walls and ceilings painted with premium quality white emulsion
- White painted minimalistic architraves and skirting
- White pendant light fittings

Kitchen

- LEICHT handleless contemporary kitchen available in a range of finishes and colours, from Lakeland Kitchens
- NEFF integrated appliances including dishwasher, fridge-freezer, oven, microwave-oven, induction hob and canopy hood
- Ceiling recessed downlights in kitchen
- Floor-to-ceiling glass aluminium sliding doors leading out to private garden

Bathroom

- Contemporary bathroom with choice of porcelain or ceramic tiles and chrome tile trim
- Chrome sink and bath taps

- Chrome shower with overhead drencher and handheld shower attachment
- Chrome heated towel rail
- Ceiling recessed downlights

Master Ensuite

- Contemporary ensuite with choice of porcelain or ceramic tiles and chrome tile trim
- Chrome taps
- Chrome shower with overhead drencher and handheld shower attachment
- Chrome heated towel rail
- Ceiling recessed downlights

Exterior

- Natural slate roof
- Private block-paved driveway and side path
- Front garden landscaped with turf and feature tree
- Private rear garden with block paved patio and top-soil
- Exterior lighting to front and rear of property
- External cold water tap
- External power supply
- Timber gate and boundary fencing or natural boundary

Warranty

- 10-year LABC warranty

Correct at time of publication. This website is for marketing purposes only and does not form part of any contract or warranty.

Consultant property floorplan for details. ¹ Plots 5, 6, 7, 19-33.



Roanhead Beach



Bridgefield is located in Lindal-in-Furness, a village on the Furness peninsula of Cumbria.

The idyllic location offers coastal walks, beautiful countryside, and essential amenities on your doorstep. Best of all, it's on the edge of the Lake District with lakes and mountains for outdoor adventurers to explore.

It's a stone's throw away from the market town of Ulverston and major employers in Barrow including BAE Systems and the NHS.

Towns and cities of Kendal, Windermere and Carlisle can be found to the north, whilst cities of Lancaster, Preston, and Manchester to the south are accessible within 2 hours by rail and road.



Rural location



On the edge of the Lake District National Park



Close to beaches and coastal walks



Ofsted Good and Outstanding schools within 5 miles



Local amenities including Booths, M&S, Aldi and Post Office



Major employers nearby including BAE Systems and the NHS

An idyllic **LOCATION**



Aldingham Beach

Find your new HOME

It's easy to reserve your new home at Bridgefield. Visit chandlershomes.com to explore the development with our virtual reality experience and to view current availability. Once you've selected your plot, contact our sales agent, J H Homes, to make your reservation.

SALES PROCESS



Reserve

Pick your plot and speak to J H Homes to secure your new home. You'll need to be in a proceedable position to reserve a plot, which means you'll need a mortgage offer and/or have your property on the market.



Exchange

Following reservation, you'll need to appoint a solicitor for the conveyancing process and exchange contracts for the property within 28 days.



Completion

Once contracts have been exchanged, we'll arrange a legal completion date for you to pick up the keys to your new Chandlers home!



J H Homes are on hand to help you buy your new Chandlers home. The award-winning team have years of experience in the Ulverston area. They'll guide you through the sales process from reservation to completion and can assist with selling your current property or mortgage advice.

CONSUMER
CODE FOR
HOME BUILDERS

www.consumercode.co.uk

When purchasing a Chandlers home, you're protected by the Consumer Code for Home Builders — a scheme that makes the home buying process fairer, more transparent and gives added protection for purchasers. Visit consumercode.co.uk for details.



All our homes come with a 10-year LABC warranty, giving peace of mind against structural defects within the first ten years after your home is completed. Further details can be found at labcwarranty.co.uk





PLOT TYPES



The Lonsdale Plot 34, 35

123.8 sq m · 1333 sq ft
3 bedroom semi detached
2 bathrooms, 1 cloakroom



The Aldingham Plot 25, 26, 27

219.3 sq m · 2360 sq ft
5 bedroom detached
2 bathrooms, 2 cloakrooms



The Foxfield Plot 5, 6, 7, 8, 9, 10

158.6 sq m · 1707 sq ft
4 bedroom detached
2 bathrooms, 1 cloakroom



The Lowick Plot 11, 12, 13, 14, 15, 16, 17, 18

113.9 sq m · 1226 sq ft
2 bedroom terrace (Over 55's)
1 shower room



The Grizedale Plot 24, 28

170.7 sq m · 1837 sq ft
4 bedroom detached
2 bathrooms, 2 cloakrooms



The Duddon Plot 19, 33

170.7 sq m · 1837 sq ft
4 bedroom detached
2 bathrooms, 2 cloakrooms



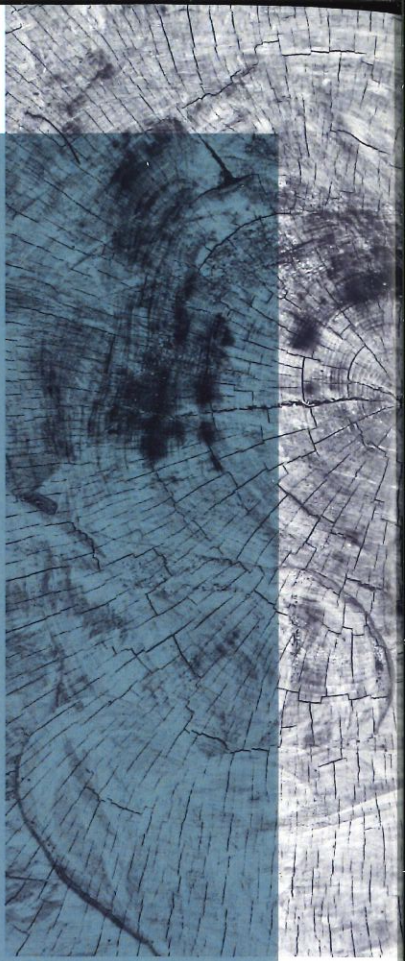
The Woodland Plot 20, 21, 22, 23, 29, 30, 31, 32

201.4 sq m · 2168 sq ft
5 bedroom detached
2 bathrooms, 2 cloakrooms





Luxury LAKELAND LIVING



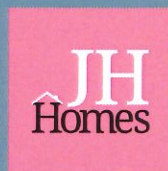
DEVELOPER



Chandlers Homes
sales@chandlershomes.com
chandlershomes.com

Bridgefield, London Road
Ulverston, LA12 0LD

SALES AGENT



J H Homes
01229 314049
contact@jhhomes.net
jhhomes.net

2 New Market Street
Ulverston, LA12 7LN

Chandlers Homes Limited. Registered in England and Wales. Company Number: 09902727

This document is for marketing purposes only and does not form part of any contract or warranty. Information is correct at time of print and subject to change without prior notification. We reserve the right to amend features, layouts, specification or finishes (internal or external) at any time during the planning/ build process. Materials and products are subject to change dependant upon supply availability and any formal planning or other restrictions. All dimensions are provided in metres and are the maximum unless otherwise stated. Dimensions should not be used for furniture, flooring, or ordering any other personal fittings. All particulars should be treated as general guidance only and cannot be relied upon as accurately describing any of the specified matters prescribed by any order made under the property Misdescription Act 1991.