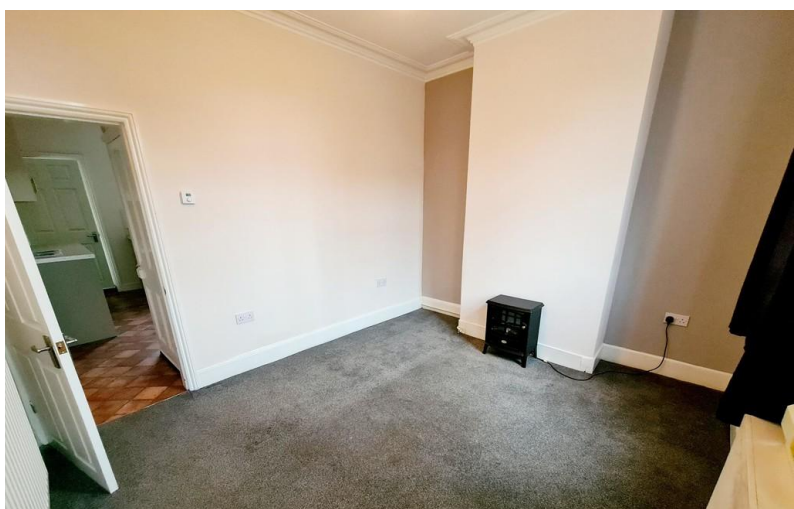


TO LET



10 Garth Street, Stoke-on-Trent

2 Bedrooms, 1 Bathroom, Mid Terraced House

£675 pcm

MARTIN&CO



10 Garth Street, Stoke-on-Trent

Mid Terraced House,
2 bedroom, 1 bathroom

£675 pcm

Date available: 24th January 2025

Deposit: £778

Unfurnished

Council Tax band: A

- Kitchen with Dining Space
- Rear Patio
- Two Double Bedrooms
- Hanley Centre
- Lounge
- Downstairs Shower Room
- Council tax band A

Martin & Co are delighted to bring to the market this well presented 2 bedroom terraced house in Hanley. Modernised to a good standard. Walking distance to Hanley centre and good commuter links also. Reception room, kitchen with dining space, downstairs shower room. Two double bedrooms upstairs. Cellar and outhouse with power and a good sized rear patio area.

Energy Efficiency Rating

	Current	Potential
Very energy efficient - lower running costs		
(92-100) A		
(81-91) B		81
(69-80) C		
(55-68) D		
(39-54) E	49	



Martin & Co Stoke on Trent

12 Albion Street • Stoke-On-Trent • ST1 1QH

T: 01782 262880 • E: stokeontrent@martinco.com

01782 262880

<http://www.martinco.com>



Accuracy: References to the Tenure of a Property are based on information supplied by the Seller. The Agent has not had sight of the title documents. A Buyer is advised to obtain verification from their Solicitor. Items shown in photographs including but not limited to carpets, fixtures and fittings are not included unless specifically mentioned within the sales particulars. They may however be available by separate negotiation. Buyers must check the availability of any property and make an appointment to view before embarking on any journey to see a property. No person in the employment of the agent has any authority to make any representation about the property, and accordingly any information given is entirely without responsibility on the part of the agents, sellers(s) or lessors(s). Any property particulars are not an offer or contract, nor for part of one. **Sonic / laser Tape:** Measurements taken using a sonic / laser tape measure may be subject to a small margin of error. **All Measurements:** All Measurements are Approximate. **Services Not tested:** The Agent has not tested any apparatus, equipment, fixtures and fittings or services and so cannot verify that they are in working order or fit for the purpose. A Buyer is advised to obtain verification from their Solicitor or Surveyor.