



St. Pauls Close | Hounslow | TW3 3DE

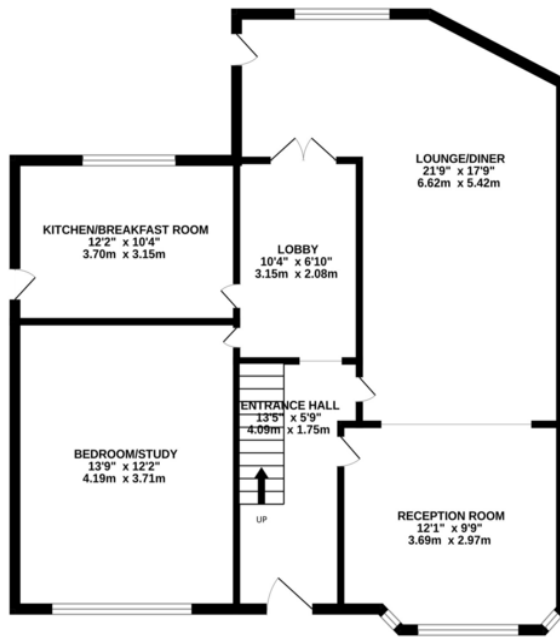
Hiltons Estates are pleased to bring to the market this Very Spacious Semi Detached home ideally located in a quiet residential road in Hounslow, TW3. The property comprises an entrance hallway, large lounge/living room, diner/conservatory, fully fitted kitchen, Large bedroom/living room, and utility area on the ground floor. Upstairs, there are 3 large double bedrooms, spacious box room, shower room and huge family bathroom. This delightful home further boasts off-street parking and large rear garden giving the property potential to extend and develop further (STPP). The rear garden currently benefits from a patio area and part laid to lawn. Ideal for homebuyers looking for a large and central-located property or investors looking to develop and maximise their investment yields. Hounslow West Underground is within walking distance as is local shops, schools and amenities. Call NOW for further details, not to be missed.

£775,000

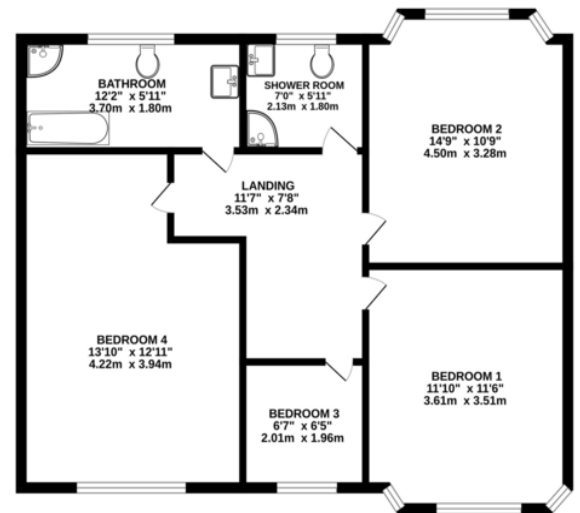
- Large semi detached 5 bed located in TW3
- Off street parking and large Rear Garden
- Potential to Extend and Develop (STPP)
- Walking distance to Piccadilly Line, Local shops and amenities
- Call NOW for further details, not to be missed



GROUND FLOOR
846 sq.ft. (78.6 sq.m.) approx.



1ST FLOOR
732 sq.ft. (68.0 sq.m.) approx.



TOTAL FLOOR AREA: 1578 sq.ft. (146.6 sq.m.) approx.

Whilst every attempt has been made to ensure the accuracy of the floorplan contained here, measurements of doors, windows, rooms and any other items are approximate and no responsibility is taken for any error, omission or mis-statement. This plan is for illustrative purposes only and should be used as such by any prospective purchaser. The services, systems and appliances shown have not been tested and no guarantee as to their operability or efficiency can be given.

Made with Metropix 6/2022

Contact Details

137 Western Road

Southall

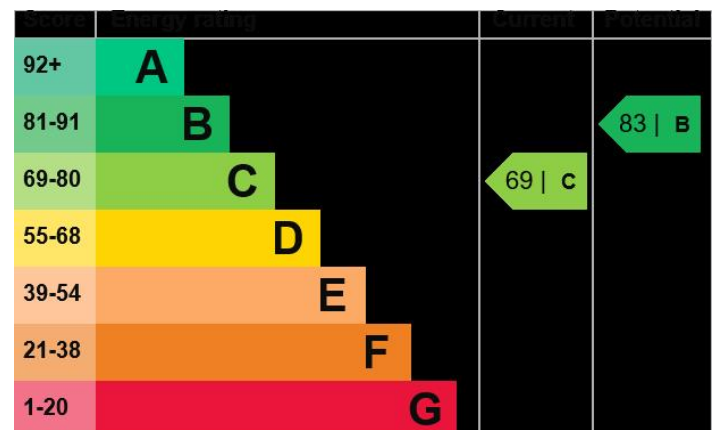
Middlesex

UB2 5HN

www.hiltons-estates.com

Harvin@hiltons-estates.com

02088679555



Agents Note: Whilst every care has been taken to prepare these sales particulars, they are for guidance purposes only. All measurements are approximate are for general guidance purposes only and whilst every care has been taken to ensure their accuracy, they should not be relied upon and potential buyers are advised to recheck the measurements