

10 HAREFIELDS
NORTH OXFORD

10 Harefields

Oxford, OX2 8NS

10 Harefields is a great three bedroom family home in North Oxford, providing a number of accommodation options.

The ground floor contains a kitchen, bathroom and bedroom. The first floor has one 'open plan' reception room and the top floor has the bedrooms and the family bathroom.

There is driveway parking to the front and a south facing patio garden to the rear.

The property can be used in many different ways from a family home with separate sleeping area to a pair of apartments (STPP), one one bedroom and one with two bedrooms.

Just minutes from the Oxford Parkway and within Cherwell School catchment it is a very affordable option in an enviable location.

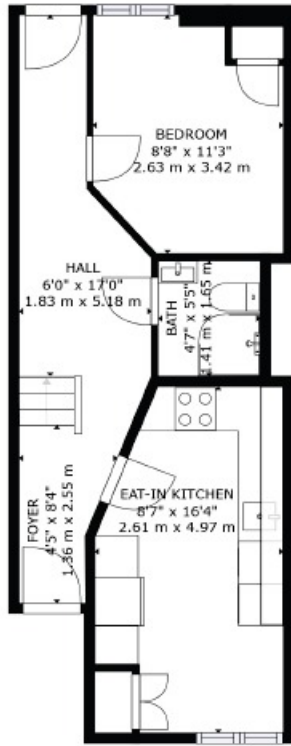


South Facing

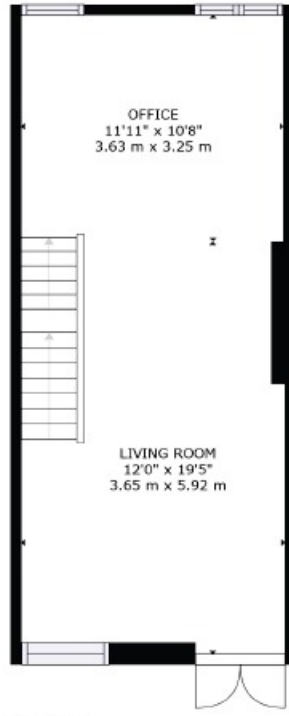
Guide Price: £550,000



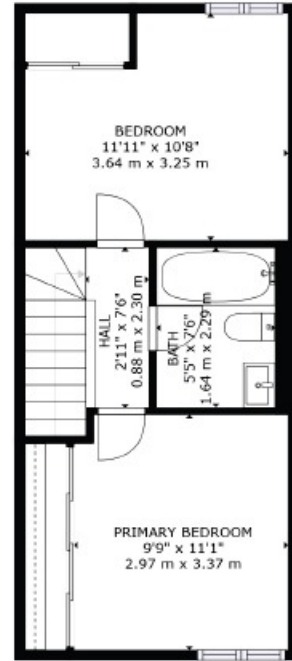




FLOOR 1

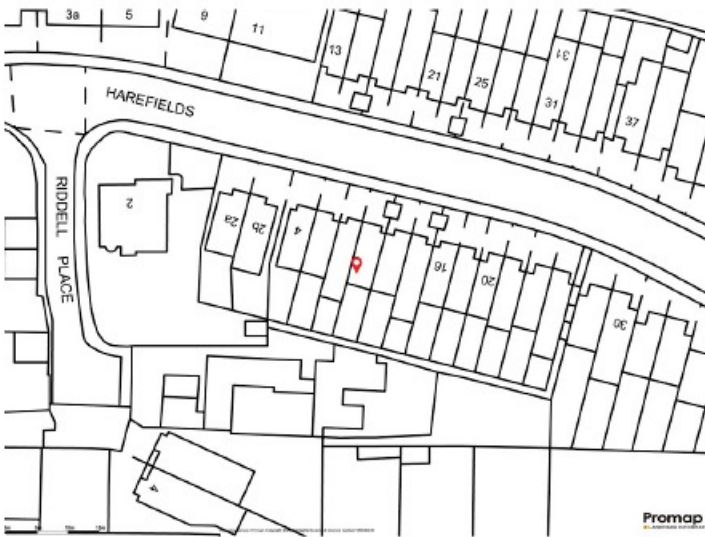


FLOOR 2



FLOOR 3

GROSS INTERNAL AREA
 FLOOR 1: 375 sq. ft., 35 m², FLOOR 2: 351 sq. ft., 33 m²
 FLOOR 3: 353 sq. ft., 33 m²
 TOTAL: 1079 sq. ft., 100 m²
 SIZES AND DIMENSIONS ARE APPROXIMATE, ACTUAL MAY VARY.



Council Tax:
Band D

Parking
Driveway

Local Authority
Oxford City

10, Harefields
OXFORD
OX2 8NS

Energy rating

D

Valid until
31 July 2024

Certificate number
8764-7223-2780-4679-9972

IMPORTANT NOTICE: These particulars are for information purposes only and do not in whole or in part constitute or form part of any offer or contract, nor should any statement obtained herein be relied upon as a statement or representation of fact. Breckon & Breckon do not test whether the services connected to the property, heating systems and domestic appliances are in working order. We therefore recommend that the purchaser obtains verification from their surveyor or solicitor. Whilst every attempt has been made to ensure the accuracy of the floor plans contained here, measurements of doors, windows and rooms are approximate and no responsibility is taken for any error, omission or mis-statement. These plans are for representation purposes only as defined by the RICS code of measuring practice and should be used as such by any possible purchaser.

“Location comment”

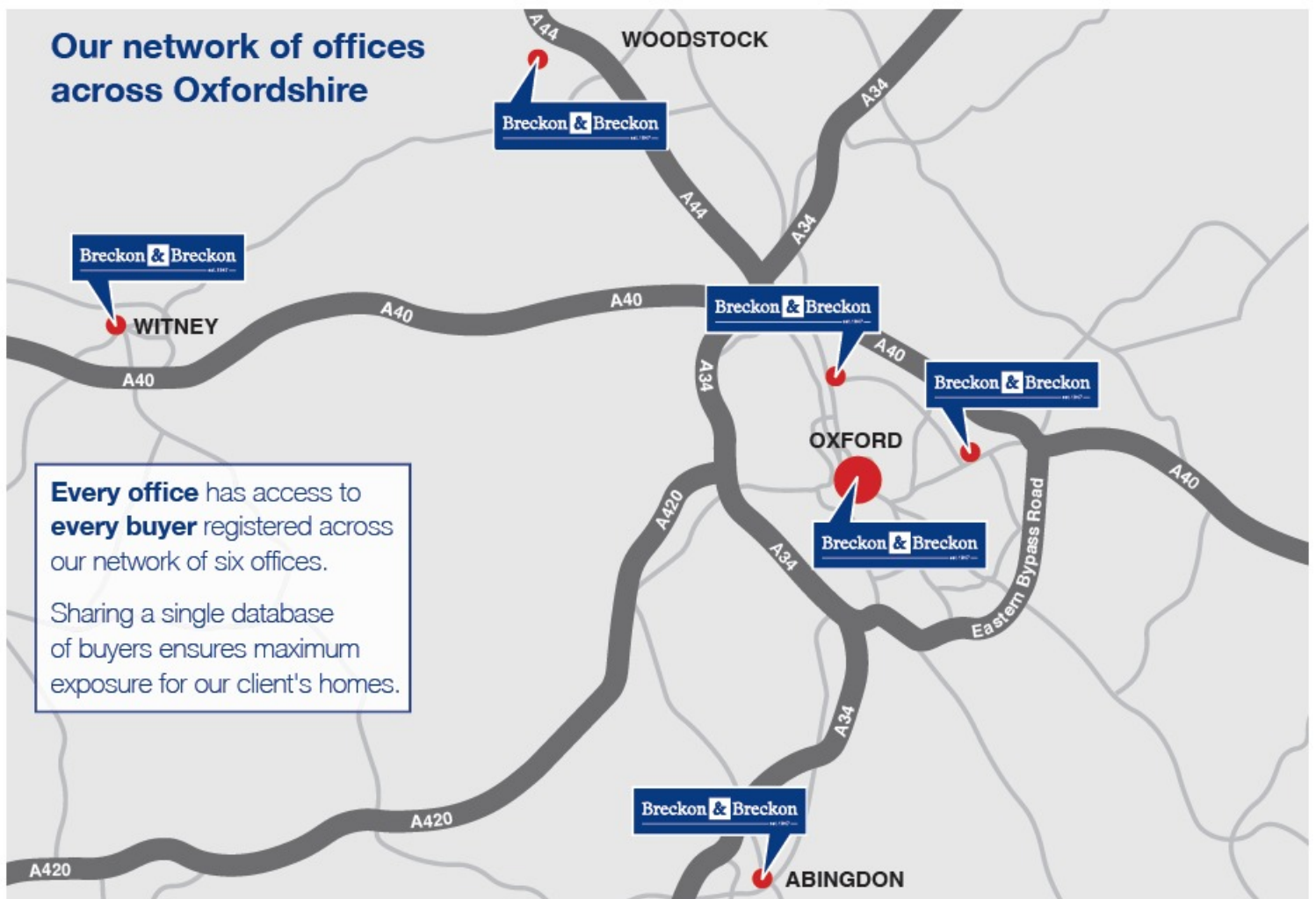
Harefields is well positioned close to Cutteslowe Park which features a playground, splash park, garden centre and miniature railway. There are also various footpaths leading towards Islip and Water Eaton.

Offering Cherwell and Cutteslowe School catchment it is a great family location.

The road is just minutes from the Oxford Parkway railway station, offering easy access to London/Birmingham. Summertown is also close by with its cafes, shops and favoured schools.



Our network of offices across Oxfordshire



Every office has access to **every buyer** registered across our network of six offices. Sharing a single database of buyers ensures maximum exposure for our client's homes.



Summertown Sales

294 Banbury Road
Summertown, Oxford OX2 7ED

Tel: 01865 310 300

✉ summertown@breckon.co.uk



Luke Mazonowicz **Lucy Kirby** **Chris Dixey** **Patrick Tustian**

Oxford city centre

Tel: 01865 244735 (sales)
Tel: 01865 201111 (letting)

Summertown

Tel: 01865 310300 (sales)

Headington

Tel: 01865 750200 (sales)
Tel: 01865 763999 (letting)

Witney

Tel: 01993 776775 (sales)

Abingdon on Thames

Tel: 01235 550550 (sales)
Tel: 01235 554040 (letting)

Woodstock

Tel: 01993 811881 (sales)
Tel: 01993 810100 (letting)

New Homes

Tel: 01865 261222

Land Team

Tel: 01865 558999

Breckon & Breckon

est. 1947

