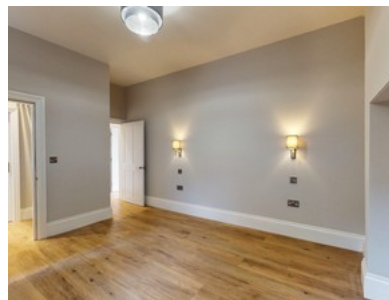





Worcester Road



- ✓ Newly Renovated
- ✓ High End Spec
- ✓ Central Location
- ✓ Great Malvern
- ✓ Three Double Bedrooms
- ✓ Openplan Kitchen And Living
- ✓ Master Bedroom With Ensuite And Dressing Room
- ✓ One Parking Space



Bedroom  3 Bathroom  3 Reception  1