



TENURE TYPE: LEASEHOLD  
1 BEDROOM 1 BATHROOM



# Large studio flat close to Victoria Station



A well presented, large studio flat superbly located within the heart of Pimlico and just a couple of minutes from Victoria and Belgravia. Accommodation comprises a large studio room, a separate kitchen and a bathroom.

Tintern House is located within the Abbots Manor development on the corner of Alderney Street and Hugh Street. The property offers wonderful accessibility to some of London's finest shops, boutiques, restaurants and theatres. Sloane Square, the King's Road, Belgravia, Victoria, Westminster and the West End are all within walking distance of the property.

Nearest transport is provided by Victoria mainline, underground and coach stations.





## PROPERTY

TINTERN HOUSE, ABBOTS MANOR, PIMLICO,  
LONDON, SW1V 4JF

### At a glance:

- Large Studio Flat
- Close to Victoria Station
- Long lease
- Close to public transport

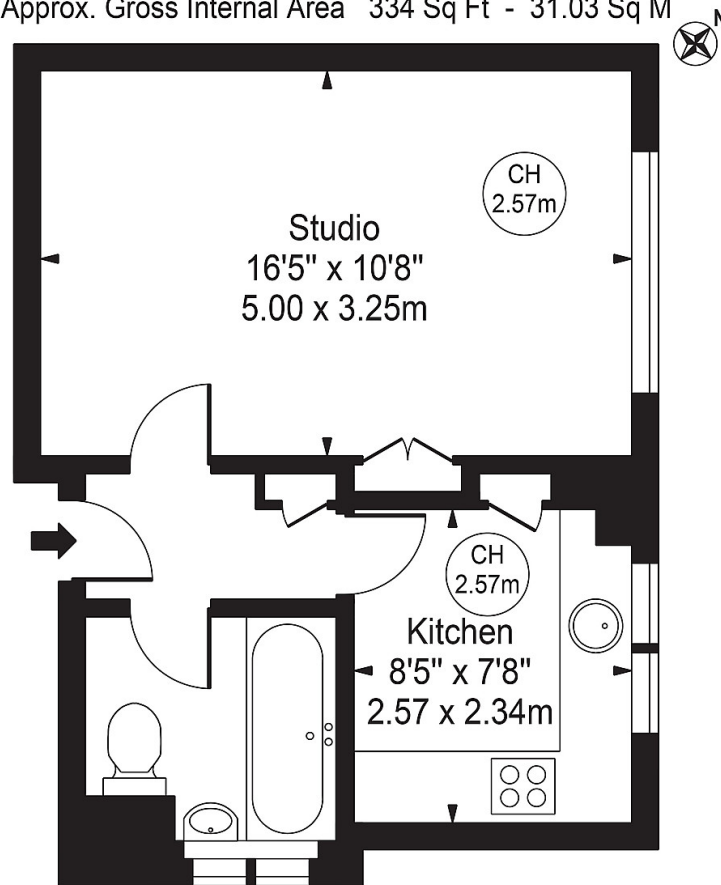
### Other information:

- Leasehold
- Lease with 88 years unexpired
- Service charge approx. £1,300 pa
- Ground rent approx. £5 pa



# Tintern House

Approx. Gross Internal Area 334 Sq Ft - 31.03 Sq M



## Ground Floor

For Illustration Purposes Only - Not To Scale

This floor plan should be used as a general outline for guidance only and does not constitute in whole or in part an offer or contract. Any intending purchaser or lessee should satisfy themselves by inspection, searches, enquiries and full survey as to the correctness of each statement. Any areas, measurements or distances quoted are approximate and should not be used to value a property or be the basis of any sale or let. Copyright Morriarti Photography & Design LTD