



Hampton Lane
Blackfield, Southampton
Asking Price Of - £166,500



- Modern One Bed Ground Floor Flat
- Modern Kitchen with Built In Induction Oven & Hob
- Modern En-suite Shower Room
- Freshly Renovated Throughout

EPC Rating

D



Property Description

LIVING ROOM Spacious living room with potential to be a lounge/diner due to its generous 18ft length. Front aspect double glazed windows and timber laminate flooring. Radiator.

KITCHEN Modern kitchen comprising of sparkling white granite effect worksurfaces, tiled surrounds, wall and base level storage with a gloss finish, single drainer sink with a chrome mixer tap, built-in induction hob and oven with extractor hood overhead, Storm boiler and room for white goods. Timber laminate flooring.

BEDROOM Spacious double bedroom, grey plush carpet, two side aspect double glazed windows, en-suit and radiator.



SHOWER ROOM / ENSUITE Modern three piece shower room comprising of a white ceramic basin with a chrome mixer tap and light grey tiled splash back, WC with push button flush, walk in double cubicle shower with matching grey tiling. Grey timber laminate flooring, heated towel rail and extractor fan.

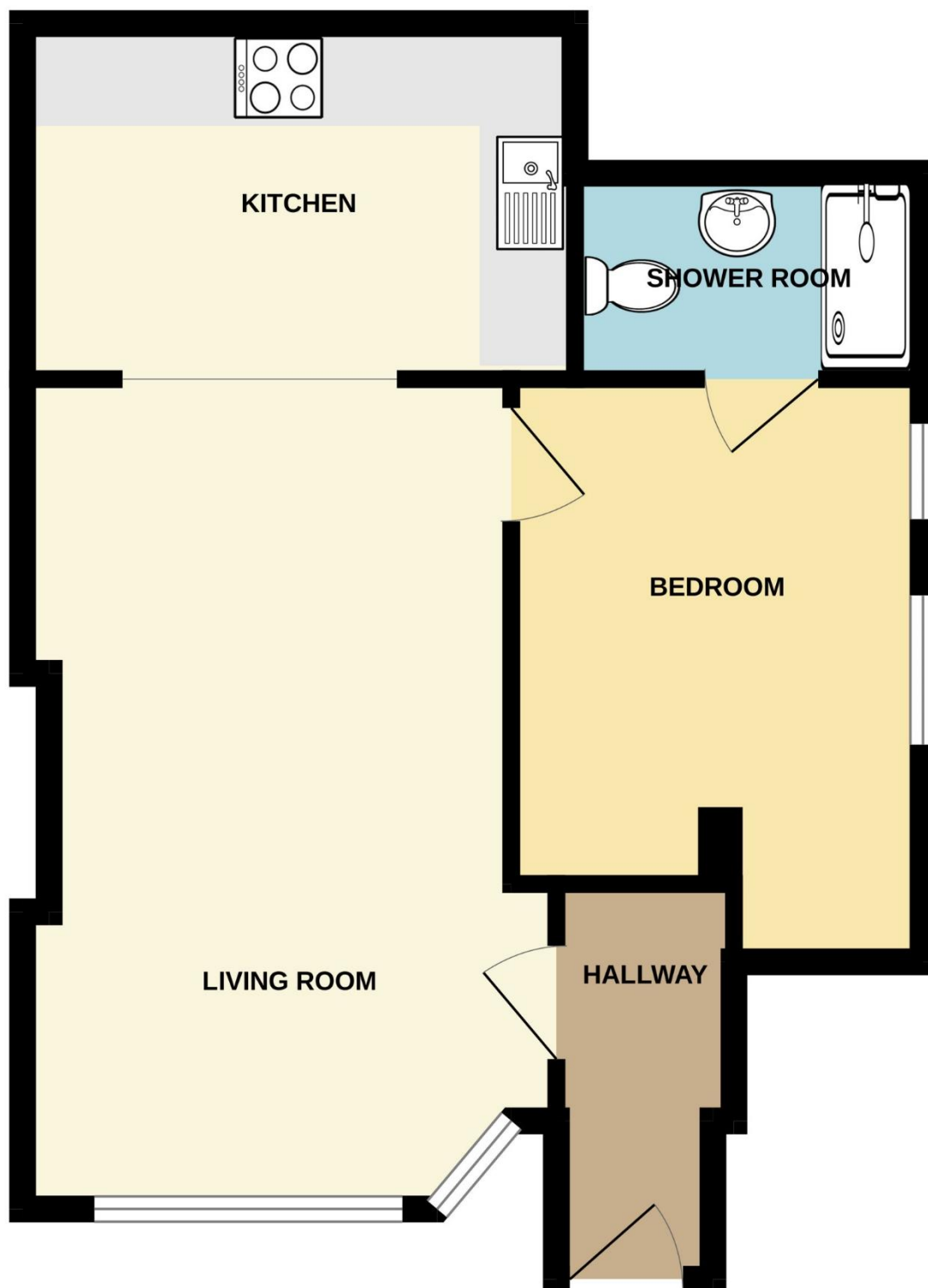
Potential availability as Freehold or new Leasehold

As leasehold;

Ground rent: £99.00 PA

Service Charge: £0 - £20 PA





Hotspur House
Prospect Place
Hythe
Southampton
SO45 6AU

www.hytheandwaterside.com
sales@hytheandwaterside.com
0238 0845 434

Agents Note: Whilst every care has been taken to prepare these sales particulars, they are for guidance purposes only. All measurements are approximate and for general guidance purposes only and whilst every care has been taken to ensure their accuracy, they should not be relied upon and potential buyers are advised to recheck the measurements