

CHANGING HOME



3 Mason Street | | Chester | CH1 4DR

£270,000

INVESTMENT OPPURTUNITY. A very well maintained and fully licenced 5/6 bedroom 3 bathroom end of terrace property close to the City Centre currently let to a mix of students and non students.

Agreement now in place to let to students for the academic year 23/24. Sold furnished.

Property Description

LOCATION

The property is set within a small cul-de-sac within a short walk of Chesr City Centre and Chester University main campus building. There are local shops and pubs very close at hand.

PROPERTY INFORMATION

This 5/6 bedroom end of terrace property has 3 bathrooms and is sold fully furnished. There is a courtyard to rear and on street parking. Currently the property is let to a mix of students and non students. Agreement in place for the let to 5 students for academic year 23/24 on the basis that Bedroom 2 is used as an office or storage and producing a gross rental of £30,940 for the academic year.

HALL

LIVING ROOM

11' 11" x 13' 8" (3.63m x 4.17m)

KITCHEN

9' 5" x 7' 11" (2.87m x 2.41m)

DINING ROOM

7' 1" x 10' 6" (2.16m x 3.2m)

BEDROOM 1

9' 9" x 12' 4" (2.97m x 3.76m)

BEDROOM 2

12' 6" x 6' 7" (3.81m x 2.01m) Agreed to be used in next academic year as an office/store room.

BEDROOM 3

9' 2" x 9' 0" (2.79m x 2.74m)

BEDROOM 4

13' 3" x 6' 10" (4.04m x 2.08m)

BATHROOM

9' 4" x 7' 2" (2.84m x 2.18m)

BEDROOM 5

13' 9" x 12' 8" (4.19m x 3.86m) max.

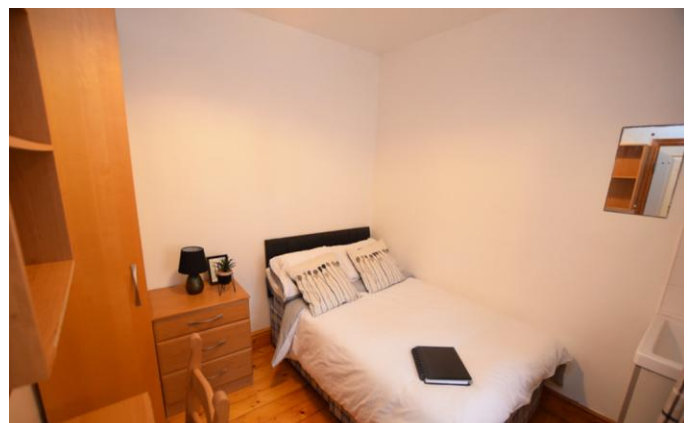
EN-SUITE

BEDROOM 6

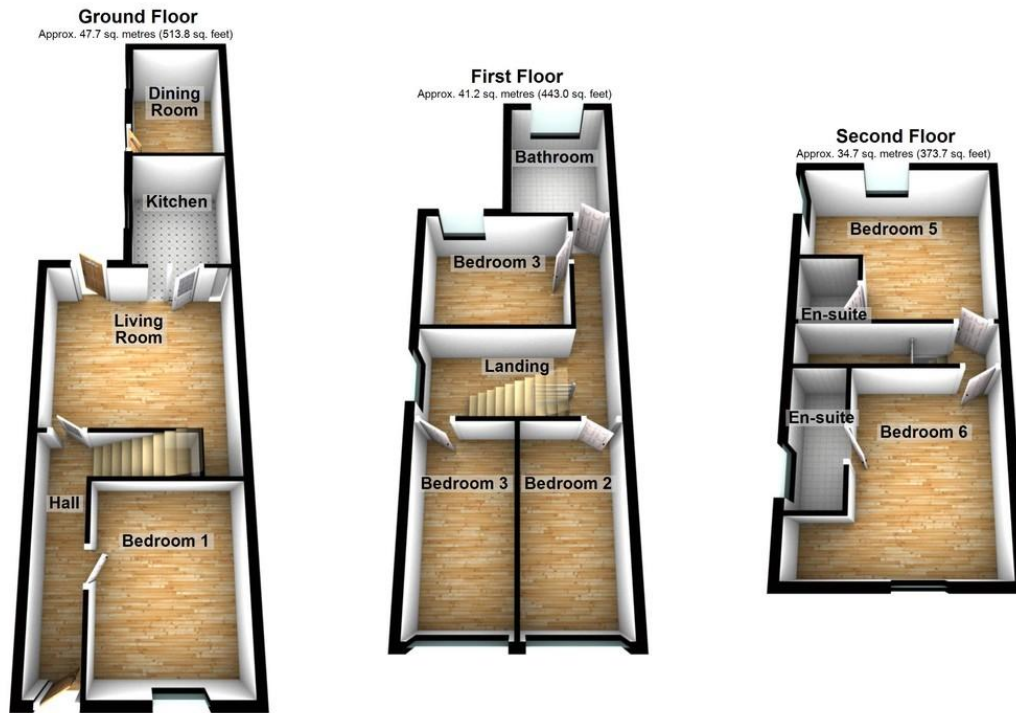
13' 10" x 13' 1" (4.22m x 3.99m) MAX.

EN-SUITE

COURTYARD







Total area: approx. 123.6 sq. metres (1330.5 sq. feet)
for illustration only not to scale
Plan produced using PlanUp.

Tenure

Freehold

Council Tax Band

C

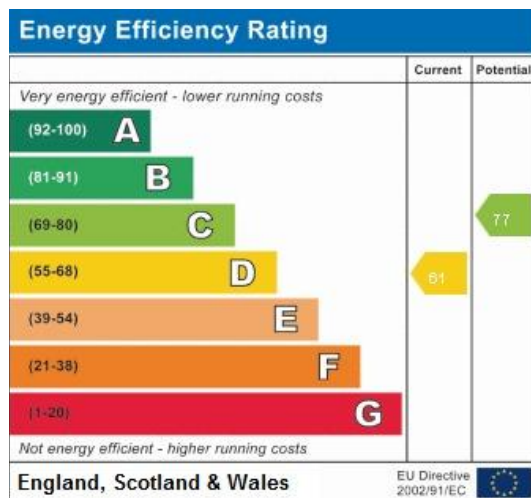
Viewing Arrangements

If you wish to make an appointment to view this or any other property that we have for offer please call us on 01244 345664

Contact Details

40 Lower Bridge Street
Chester
Cheshire
CH1 1RS

www.changing-home.co.uk
jeremy@changing-home.co.uk
01244 345664



Agents Note: Whilst every care has been taken to prepare these sales particulars, they are for guidance purposes only. All measurements are approximate are for general guidance purposes only and whilst every care has been taken to ensure their accuracy, they should not be relied upon and potential buyers are advised to recheck the measurements