



3

Bedrooms



1

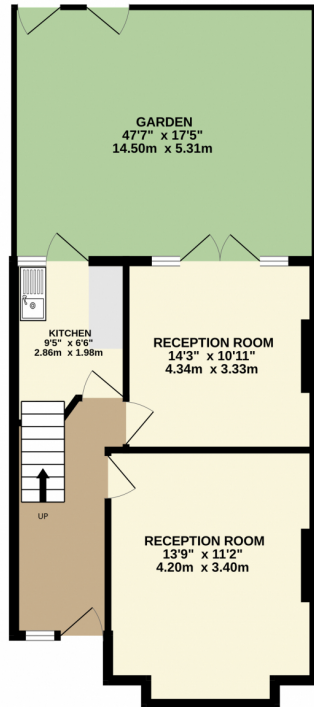
Bathroom



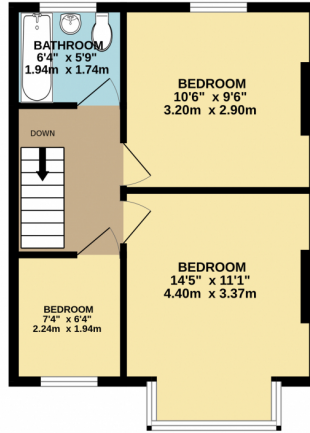
Greengate Residential Ltd are pleased to present this three bedroom end of terrace house for sale. The property is ideally located close to local amenities including Jubilee Park , local schools and transport. The property is offered in good condition with potential to extended (s.t.p.p) and is available chain free.

Currently Tenanted.

GROUND FLOOR
415 sq.ft. (38.6 sq.m.) approx.



1ST FLOOR
393 sq.ft. (36.5 sq.m.) approx.



TOTAL FLOOR AREA: 808 sq.ft. (75.1 sq.m.) approx.

Whilst every attempt has been made to ensure the accuracy of the floorplans contained here, measurements of doors, windows, rooms and any other items are approximate and no responsibility is taken for any error, omission or mis-statement. This plan is for illustrative purposes only and should be used as such by any prospective purchaser. The services, systems and appliances shown have not been tested and no guarantee as to their operability or efficiency can be given.
Made with Metropix ©2022

