

PESTELL & Co

ESTABLISHED 1991



7 BRIGNALL PLACE, DUNMOW, CM6 1ET

2 bedroom apartment | £1200 pcm

BRIGNALL PLACE, DUNMOW

We are pleased to offer this two bedroom, top floor, very generously proportioned apartment with parking, two bathrooms, loft storage, finished to the highest order. Located only a short walk away from Dunmow high street, amenities are on the doorstep of this property.



ENTRANCE HALL

With secure entry phone system, doors to airing cupboard housing pressurised water system, shelving and racking above, ceiling lighting, fitted radiator and doors to rooms:

LIVING ROOM 18" X 14'1"

Ceiling lighting, fitted radiator and door to:

KITCHEN

Comprising of an array of eye and base level units and drawers, complimentary rolled work surface with tiled splash back, integrated stainless steel oven with four ring hob and extractor over, integrated fridge and freezer, integrated washer dryer, ceiling lighting and fitted radiator.

BRIGNALL PLACE, DUNMOW

MASTER BEDROOM 14'2" X 12"

With built-in array of wardrobes, ceiling lighting, window to rear and door to:

EN-SUITE

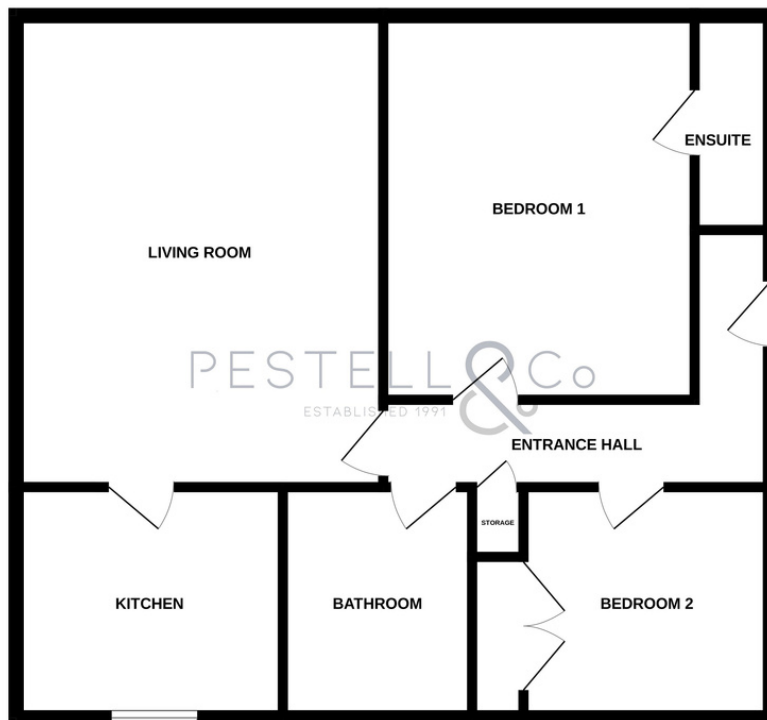
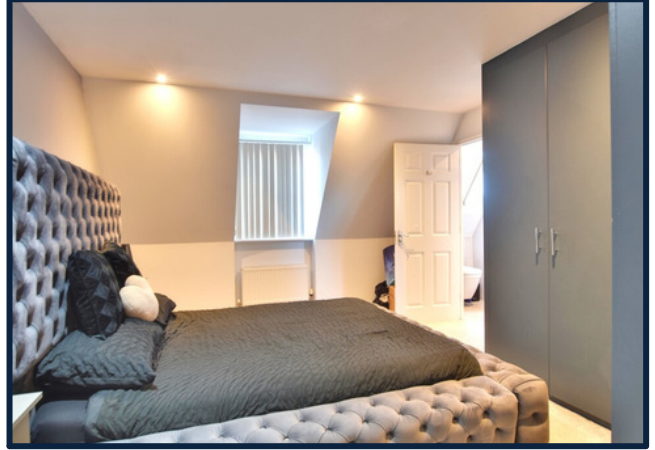
Comprising of a white suite with close coupled WC and pedestal wash hand basin, fully tiled separate shower cubicle with wall mounted shower, window to rear, ceiling lighting, extractor fan and heated chromium towel rail.

BEDROOM 2 9" X 8 '3"

With built-in wardrobes, ceiling lighting, window to front and fitted radiator.

BATHROOM

Comprising of a white suite with panel enclosed bath with mixer tap and shower attachment, close coupled WC and pedestal wash hand basin, half tiled surround, heated chromium towel rail, window to rear.



GENERAL REMARKS & STIPULATIONS

FULL PROPERTY ADDRESS

7 Brignall Place, Dunmow, CM6 1ET

COUNCIL TAX BAND

Band C

SERVICES

Gas central heating, mains drainage and electric

VIEWING

Strictly by appointment with the selling agent Pestell & Co.

LOCAL AUTHORITY

Uttlesford District Council, London Road, Saffron Walden, CB11 4ER - 01799 510510

EPC RATING

Current rating: TBC
Potential rating: TBC

DIRECTIONS



AGENTS NOTE: The information given in these particulars is intended to help you decide whether you wish to view this property and to avoid wasting your time in viewing unsuitable properties. We have tried to make sure that these particulars are accurate, but to a large extent we have to rely on what the Landlord tells us about the property.