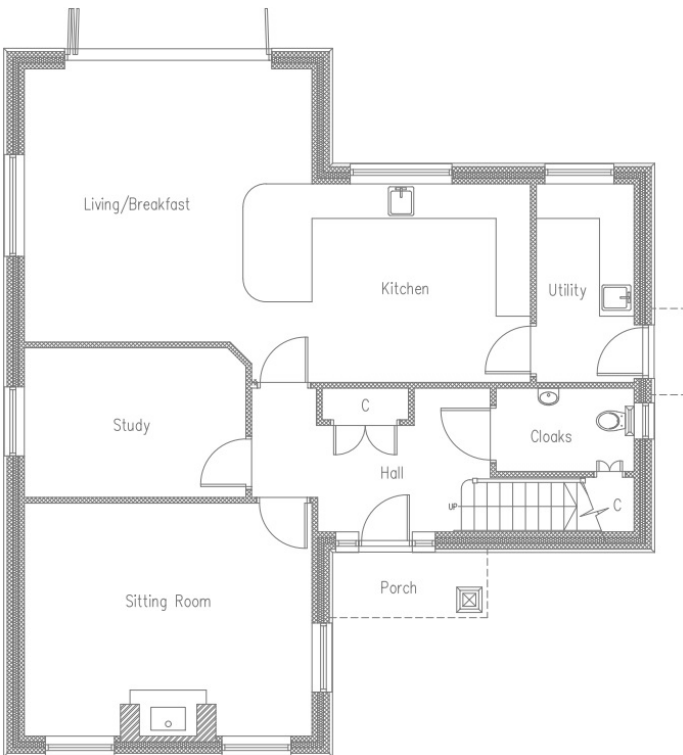


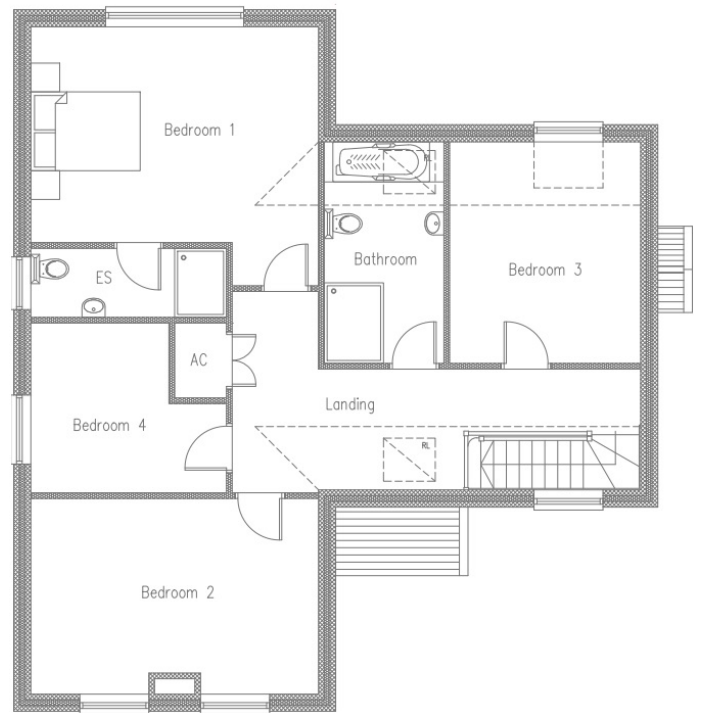


FOUR BEDROOM,
DETACHED HOME

Plot TWO



GROUND FLOOR



FIRST FLOOR

Floorplans shown are approximate measurements only. Exact layouts and sizes may vary. The dimensions are not intended to be used for carpet sizes, appliance sizes or items of furniture. Furniture layouts indicative only. Kitchen layout indicative only. Floorplans have been sized to fit the page, as a result this plan may not be at the same scale as plans on other brochures.

The Street, Assington



DESCRIPTION

Bychoice Land & New Homes are delighted to present a collection of three executive four bedroom detached homes in the desirable village of Assington.

Assington is serviced by a range of local amenities such as public house, cafe/ restaurant and farm shop and within a short drive to Sudbury, Colchester and Stoke-By-Nayland Resort and Golf Course.

Plot one offers contemporary and spacious living with the ground floor of the property comprising a generous living/ dining area with open plan kitchen, separate utility area, sitting room, snug/ study and ground floor cloakroom.

Upstairs the property boast four double bedrooms, with the bedroom one complimented by an en-suite shower room.

Externally, to the front is a private driveway and an enclosed garden to the rear of the property.

GROUND FLOOR

LIVING/ DINING AREA

16'4" x 15'7"

KITCHEN AREA

12'4" x 11'4"

SITTING AREA

16'4" x 13'3"

SNUG/ STUDY

12'3" x 8'5"

UTILITY

11'4" x 5'8"

CLOAK ROOM

8'4" x 4'7"

FIRST FLOOR

BEDROOM ONE

16'4" x 12'4"

BEDROOM TWO

16'4" x 11'2"

BEDROOM THREE

12'7" x 11'1"

BEDROOM FOUR

11'4" x 9'5"

EN SUITE (BEDROOM ONE)

11'4" x 3'9"

BATHROOM

11'1" x 6'8"

Plot **TWO**

THE STREET, **ASSINGTON**

01787 468400 • sudbury@bychoice.co.uk • bychoice.co.uk

Bychoice
ESTATE AGENTS