



WORLEY | 3 BEDROOM

WEAVERS WAY



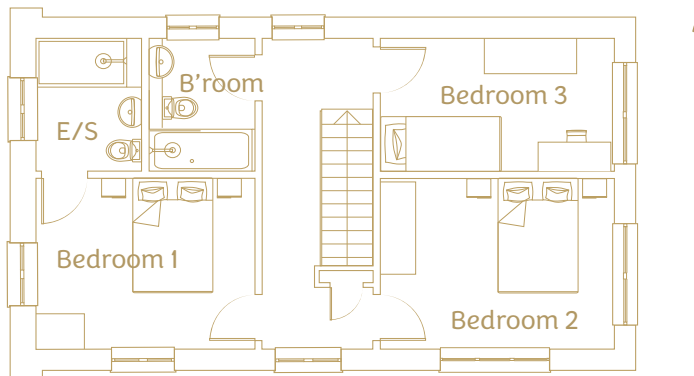
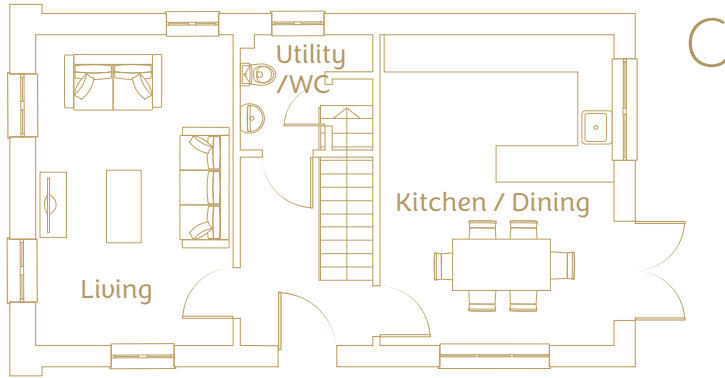
In terms of living space, this one-of-a-kind luxury three-bedroom eco home comprises a master bedroom with walk-in wet room ensuite, one double bedroom, and an additional single bedroom. The single would also make an excellent home workspace.

Descending the stairs, a separate living area is situated on the right and Worley's large open plan kitchen-dining room on the left. This communal family space opens out onto the private garden through paired French windows that let in plenty of natural light.

Worley is built on fabric-first principles. This means it has exceptional air tightness and mechanical ventilation with heat recovery, leading to lower energy bills and a healthier living environment. It also means that timber, a renewable material, was used in its construction wherever possible.

Viewed from the outside, Worley's UK-sourced stone and large feature windows – inspired by the Georgian proportions of Sandford houses – root it firmly in the local area.

PLOT 8



Total internal area: 98.2 sq m

Ground floor

Living 16.8m² | 3.3m x 5.1m
 Kitchen / Dining 21.4m² | 3.9m x 5.1m
 Utility / WC 3.3m² | 1.4m x 1.9m

First floor

Bedroom 1 10.2m² | 3.6m x 2.8m
 Ensuite 3.8m² | 1.8m x 3.0m
 Bedroom 2 10.9m² | 3.9m x 2.8m
 Bedroom 3 8.5m² | 3.9m x 2.2m
 Bathroom 3.8m² | 1.8m x 2.2m

PLOT 8