



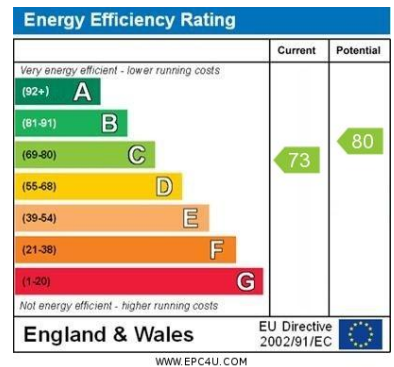
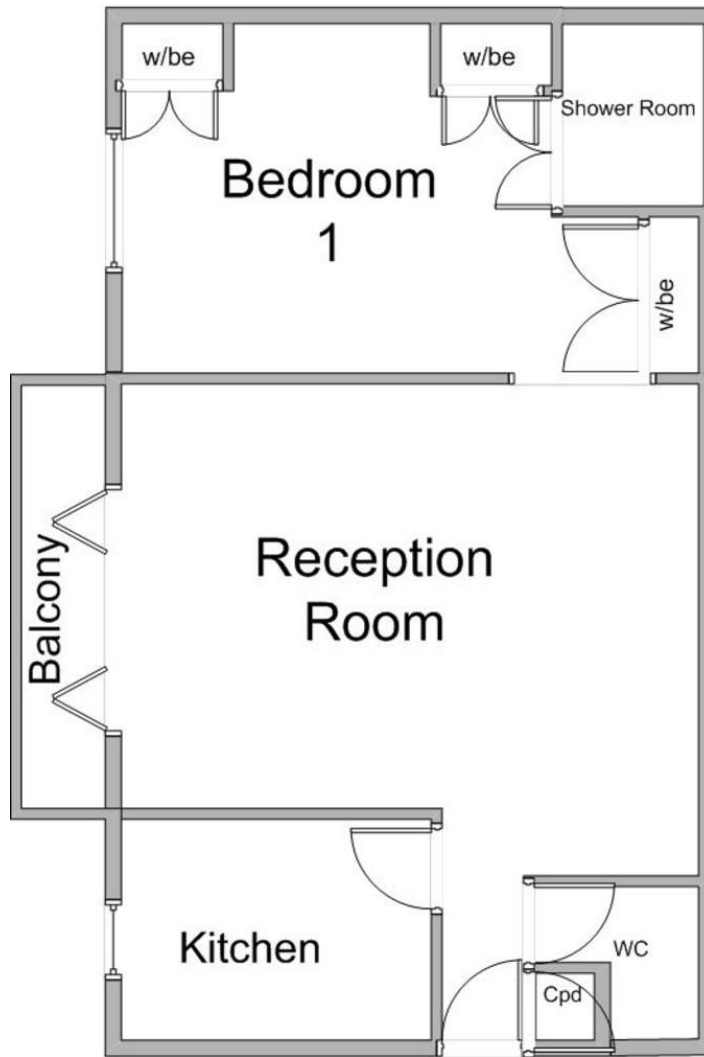
- Superb Location
- Allocated Parking Space
- Outside Space
- First Floor Apartment
- En Suite Shower Room
- Unfurnished

A well-appointed first floor apartment ideally located within a popular block a short walking distance of Epping High Street and directly behind Epping Underground Station. The property comes unfurnished and offers one bedroom accommodation with en-suite shower and separated WC, bright lounge and kitchen with fully integrated appliances. Further features include one allocated car parking space.

Stevenette

**41 Cedar Court
Epping, CM16 4HL
£1,400 pcm**

Gross Internal Floor Area (excluding balcony): Approximately 558 sq.ft / 52 sq.m



5a Simon Campion Court, 232-234 High Street, Epping, Essex, CMI6 4AU
 Tel: 01992 563090
 Email: lettings@stevenette.com



Whilst every care has been taken in the preparation of these sales particulars, they are for guidance purposes only and no guarantee can be given as to the working condition of the various services and appliances. Measurements have been taken as accurately as possible but slight discrepancies may inadvertently occur. The agents have not tested appliances or central heating services. Interested applicants are advised to make their own enquiries and investigation before finalising their offer purchase.