



THE STORY OF

# Storm Sea

*Sheringham, Norfolk*

**SOWERBYS**



S

THE STORY OF

# Storm Sea

29 Beeston Road, Sheringham,  
NR26 8EH

Substantial Period Residence

Five Bedroom Options

Elegant Formal Receptions

Modern Kitchen with Adjoining Breakfast Room

Newly Fitted Sash Windows and Doors

New Boiler/Heating System

Landscaped Generous Gardens

Gated Off Road Parking

Prime Coastal Position

Short Stroll to Town and Beach

SOWERBYS HOLT OFFICE

01263 710777

holt@sowerbys.com



“A handsome period residence, which perfectly captures the essence of north Norfolk coastal town living.”

Coastal town living personified and set within a brick and flint period home in prime residential location.

‘Storm Sea’ perfectly captures the essence of north Norfolk coastal town living with an enviable location just a few hundred yards from the beach.

A brick and flint façade with mellow red brick dressings and an elegant, bayed window strikes a handsome pose set amongst similar aged properties along this highly desired residential road,

which leads down to Sheringham’s coveted beach and coastline.

Well-proportioned accommodation is set across three floors. The house now benefits from four newly fitted hardwood, double glazed sash windows, new boiler and a new roof.

Extending to around 1,700 sq. ft. the balanced accommodation is nicely presented throughout and ready to enjoy.



A handsome front door with arched fanlight above opens to the hall with original tiled floor, high ceiling and straight staircase rising to the first floor.

Off the hall is the sitting room, which features a wonderful, low-set bay with double glazed sash window, wooden floors and a fireplace with wood-burner.

Adjacent to the sitting room is the dining room/second reception with sash window to the rear and a decorative Victorian fireplace.

Moving onto the rear section of the house there is a breakfast room, kitchen and a family sized bathroom.



“...an inviting hall, which immediately sets the tone for the house with original tiled floor, high ceiling...”



The first floor has two good sized bedrooms, each with decorative fireplaces, a third bedroom and a spacious family sized bathroom.

On the second floor you will find a further double bedroom and a single bedroom/ study.

“There are subtle reminders of both its architectural heritage and coastal provenance.”

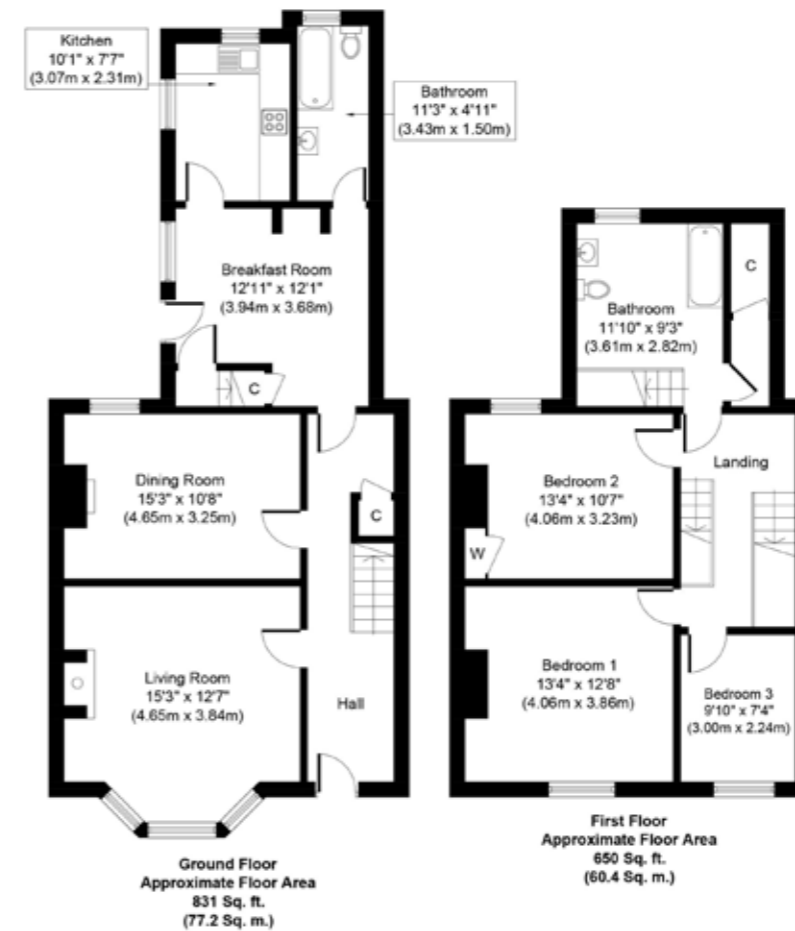
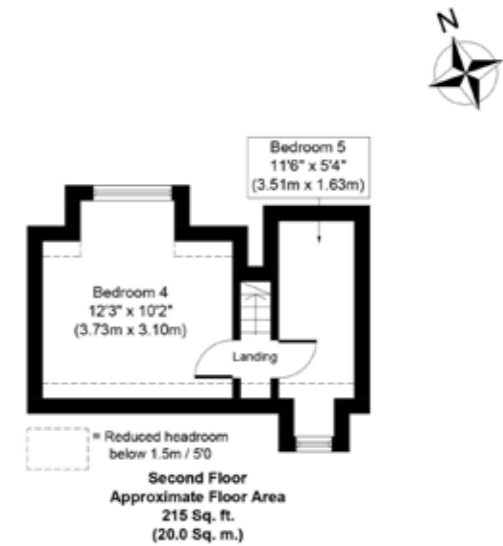






Outside the elegant front façade is dressed with a courtyard garden, enclosed by attractive flint walls and personal gate to front door.

On the north elevation is a shared driveway, which leads through the generous rear garden, where there are three patios, parking for two cars and two outside brick stores.



Whilst every attempt has been made to ensure the accuracy of the floor plan contained here, measurements of doors, windows, rooms and any other items are approximate and no responsibility is taken for any error, omission, or mis-statement. This plan is for illustrative purposes only and should be used as such by any prospective purchaser or tenant. The services, systems and appliances shown have not been tested and no guarantee as to their operability or efficiency can be given.

Copyright V360 Ltd 2022 | www.houseviz.com





ALL THE REASONS

# Sheringham

IS THE PLACE TO CALL HOME



Sheringham's motto, 'The sea enriches and the pine adorns', sets the scene for all that this traditional seaside town encompasses.

Historians believe a Viking warlord settled his tribe in the area c.900, and the area later became a farming and fishing community.

The arrival of the railway in the early 19th century saw the town's population surge and the landscape evolve with a delightfully eclectic range of architectural styles. Today, the station sits on the mainline rail link to Norwich and onwards to London or Cambridge – whichever track you follow, it's an unbeatable coastal commuter town to come home to.

At the heart of Sheringham is a thriving high street with a parade of independent shops peppered with plenty of tourist stops offering sugary treats and colourful postcards. Park at the top of the hill, next to the heritage North



Norfolk Railway which runs steam and diesel trains to Holt in the summer months, and wind your way down to the seafront where a stunning Blue Flag pebble and sandy beach awaits for an indulgent hour spent stone-skimming.

Learn more about the relationship between sea and land at the town's museum, fondly known as The Mo, where retired lifeboats reflect the past and a showcase of the Sheringham Shoal Offshore Wind Farm presents the future of the coastline.

At the end of the high street stands the Sheringham Little Theatre, a real local treasure which attracts an illustrious cast of actors from the nationals and is renowned for a vibrant summer rep season and glorious Christmas panto. The Hub, in the theatre's foyer, is a fantastic community café and place to catch up on neighbourhood news.

Locals love to celebrate the town's heritage, with a week of Viking themed events in February, a shared Crab and Lobster Festival with Cromer in May and an all-out carnival in August.

After the bustle of town, step away from the crowds and head along the Norfolk Coastal path to the top of Beeston Bump, just 15 minutes out of town, and immerse yourself in nature as you survey stunning views over the North Sea, Sheringham and West Runton. Or for an even bigger adventure, head to Sheringham Park and take the Repton Walk to the Gazebo for 360° views across the surrounding countryside – what a wonderful town to call home.

Note from Sowerbys



Sheringham sea front

"It's coastal town splendour."

SOWERBYS



## SERVICES CONNECTED

Mains water, electricity, gas and drainage. Heating via gas central heating.

## COUNCIL TAX

Band C.

## ENERGY EFFICIENCY RATING

D. Ref:- 0248-9091-7222-6921-6924

To retrieve the Energy Performance Certificate for this property please visit <https://find-energy-certificate.digital.communities.gov.uk/find-a-certificate/search-by-reference-number> and enter in the reference number above.

Alternatively, the full certificate can be obtained through Sowerbys.

## TENURE

Freehold.

## LOCATION

What3words: ///quiet.narrates.called

These particulars and measurements whilst believed to be accurate, are set out as a general outline only for guidance and do not constitute any part of an offer or contract. Intending purchasers should not rely on them as statements of representation of fact, but must satisfy themselves by inspection or otherwise as to their accuracy. No person in this firm's employment has the authority to make or give representation or warranty in respect of the property.

# SOWERBYS



Sowerbys Estate Agents Limited is a company registered in England and Wales, company no: 05668606. Registered office 54 Westgate, Hunstanton, Norfolk, PE36 5EL