

London Borough of Lewisham.

Band 'C' £1615pa

Service Charge circa £400 - £500 (to be verified)

Ground rent. Negatable. (to be verified)

Plans available at Lewisham

Council/Planning applications.

DC/20/119690

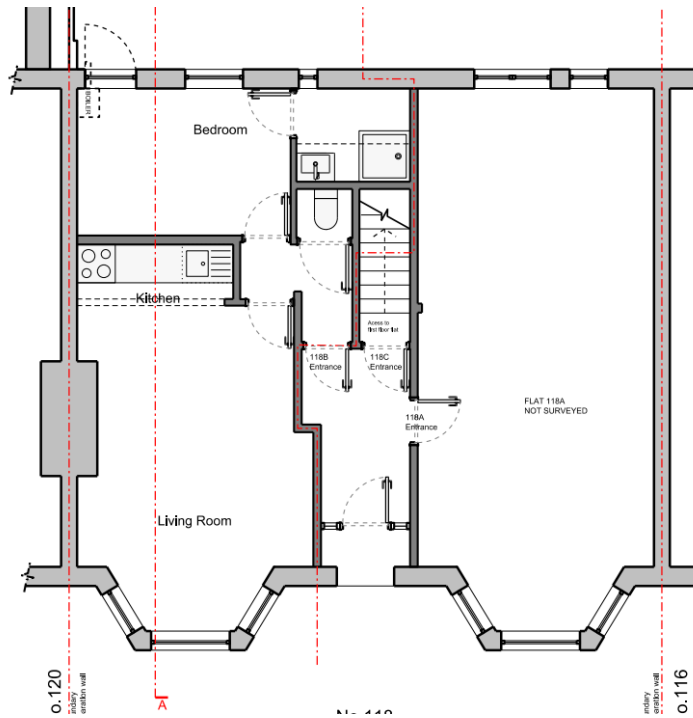
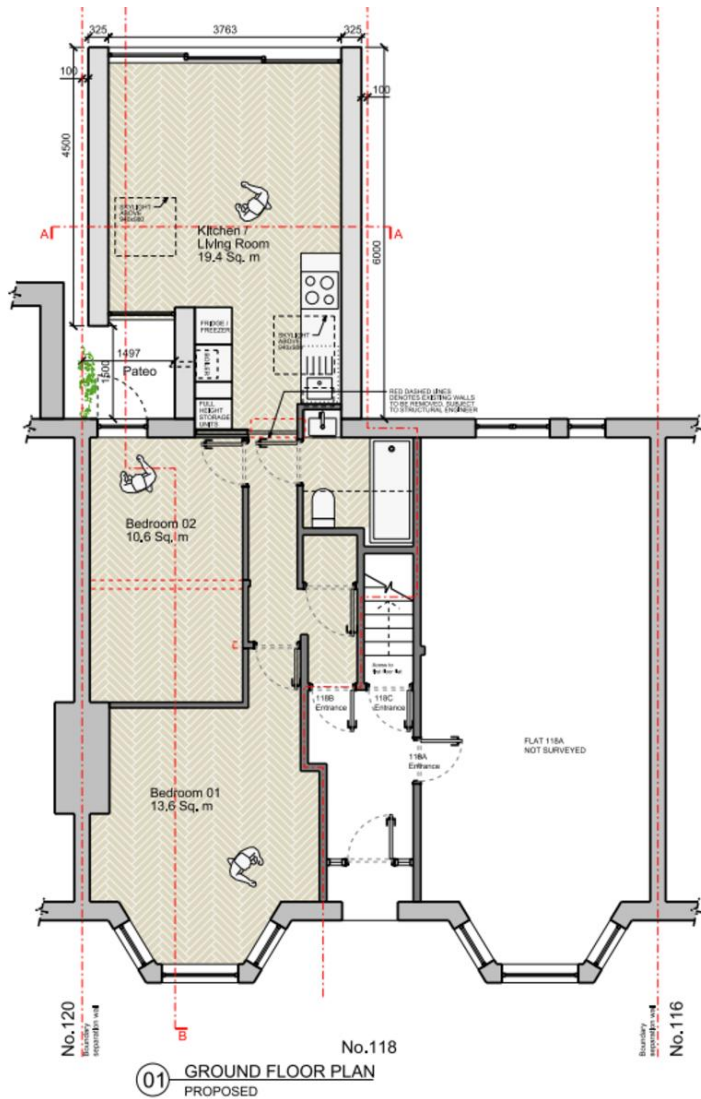


- WITH PLANNING PERMISSION
- CHANCE TO ADD VALUE
- PLANS FOR 2 BEDROOM FLAT
- WITH A PRIVATE GARDEN

Wellmeadow Road, London SE6 1HW

Offers in excess of £275,000

In recent years you hear a lot of people saying that they are looking for something to add value to. Well look no further. What we have here is a small one bedroom flat which has planning permission to convert to a two bedroom flat. The property will still enjoy a generous sized garden. The flat is located on the Hither Green side of the Catford Corbett estate. So the road is wide and leafy with lots of natural light. Attached are the plans for the flat in present size together with the plans once extended. This is a great opportunity to create a smashing project. #AskBeaumont



Energy rating	Current	Potential
B		76 c
C		
D	62 d	
E		
F		
G		

South London Branch, 197
Lewisham High Street, London,
SE13 6AA

www.markbeaumont.com
020 8852 5000
sales@markbeaumont.com

Agents Note: Whilst every care has been taken to prepare these particulars, they are for guidance purposes only. All measurements are approximate and for general guidance purposes only and whilst every care has been taken to ensure their accuracy, they should not be relied upon and potential buyers are advised to recheck the measurements.