

CHANGING HOME



Black Diamond Park | Chester | CH1 3ET

£160,000

A 2 bedroom 2 bathroom ground floor apartment in a popular location close to City Centre, Hoole and main railway station. The apartment has its own front door, UPVC double glazed, gas central heating and allocated parking.

Hall, living room, kitchen, master bedroom, en-suite, second bedroom and bathroom.

Property Description

PROPERTY DETAILS

This modern purpose built apartment has its own front door and is ideally set overlooking a green to the front and close to Hoole, Chester City Centre and the main railway station. With allocated parking, UPVC double glazing and gas central heating the property is ideal for investors or owner/occupiers.

LOCATION

The apartment is a short walk from Chester City Centre, Hoole and the main railway station. There are local shops and pubs close by.

HALL

LOUNGE/DINER

14' 3" x 11' 2" (4.34m x 3.4m)

KITCHEN

7' 4" x 6' 9" (2.24m x 2.06m)

BEDROOM

10' 4" x 8' 6" (3.15m x 2.59m) plus wardrobe and doorway.

EN-SUITE

BEDROOM 2

11' 11" x 5' 10" (3.63m x 1.78m)

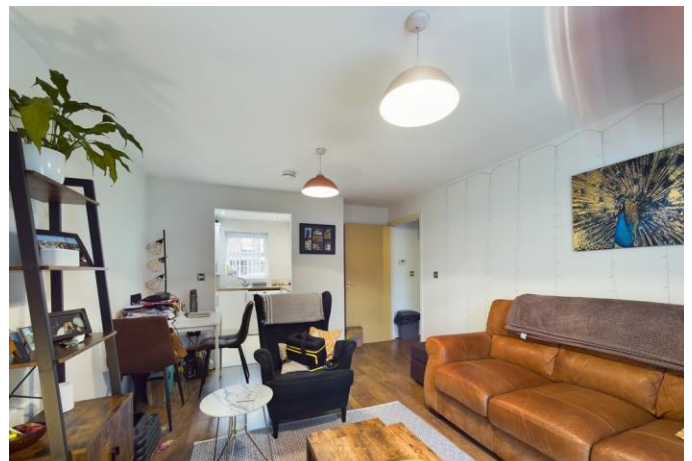
BATHROOM

7' 10" x 6' 1" (2.39m x 1.85m)

ALLOCATED PARKING

LEASEHOLD DETAILS

The apartment is leasehold with 110 years left on the lease. The service charge is currently we understand £70.15 per month. The ground rent is £150 per year.





Ground Floor

Approx. 54.2 sq. metres (583.2 sq. feet)



Total area: approx. 54.2 sq. metres (583.2 sq. feet)

for illustration only not to scale
Plan produced using PlanUp.

Tenure

Leasehold

Council Tax Band

B

Viewing Arrangements

If you wish to make an appointment to view this or any other property that we have for offer please call us on 01244 345664

Contact Details

40 Lower Bridge Street
Chester
Cheshire
CH1 1RS

www.changing-home.co.uk
jeremy@changing-home.co.uk
01244 345664

%epcGraph_c_1_349%

Agents Note: Whilst every care has been taken to prepare these sales particulars, they are for guidance purposes only. All measurements are approximate and are for general guidance purposes only and whilst every care has been taken to ensure their accuracy, they should not be relied upon and potential buyers are advised to recheck the measurements