



 **3**
Bedrooms

 **2**
Bathrooms



We are delighted to offer for sale this 3 bedroom terraced town house located in the popular Bird Development, which is just a short stroll from Colindale tube station and all the other local amenities Colindale has to offer.

The property is arranged over 3 floors and benefits from a large lounge which leads to a private rear garden, a spacious fitted kitchen, 3 spacious bedrooms, 2 bathrooms (1 shower room) and an allocated parking space.

Offered chain free the property is a great property for people looking for a family home or as a rental investment.

Entrance Hall 5.10m x 1.10m (16.73ft x 3.61ft)

Reception 4.20m x 3.30m (13.78ft x 10.83ft)

Kitchen 3.10m x 2.20m (10.17ft x 7.22ft)

1st floor landing 3.80m x 1.10m (12.47ft x 3.61ft)

Bedroom 1 3.30m x 3.00m (10.83ft x 9.84ft)

Bedroom 2 3.30m x 2.20m (10.83ft x 7.22ft)

Bathroom 2.10m x 1.90m (6.89ft x 6.23ft)

2nd Floor Landing 1.80m x 1.10m (5.91ft x 3.61ft)

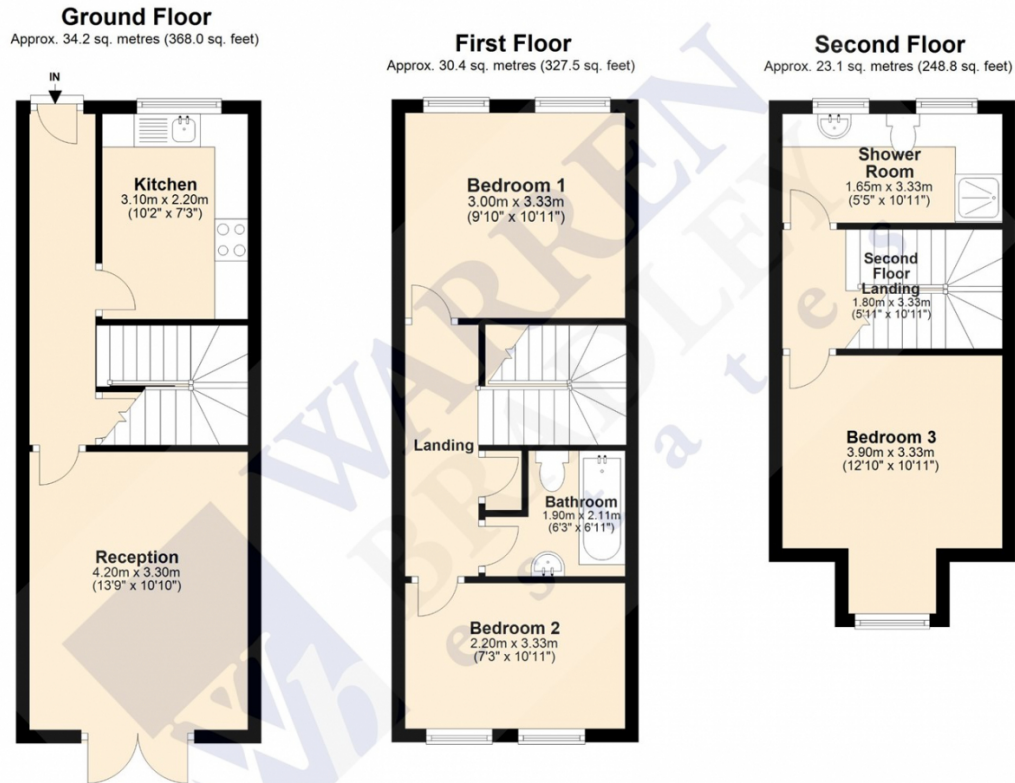
Bedroom 3 3.90m x 3.30m (12.80ft x 10.83ft)

Shower room 3.30m x 1.60m (10.83ft x 5.25ft)

Rear Garden 7.50m x 3.30m (24.61ft x 10.83ft)

Parking

Allocated off street parking space



Total area: approx. 87.7 sq. metres (944.3 sq. feet)

Disclaimer: Please note this floor plan is for marketing purposes and is to be used as a guide only.
 Plan produced using PlanUp.

