



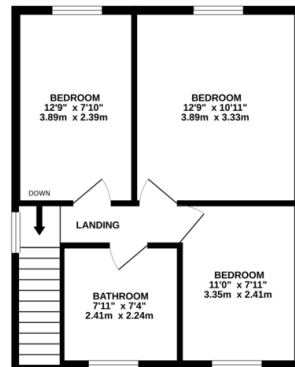
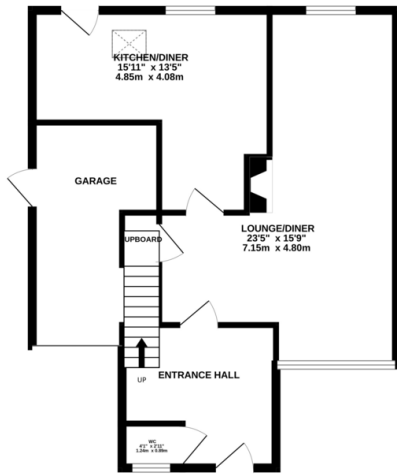
Property Summary

Well proportioned family home occupying a generous corner plot for sale in the ever popular village of East Goscote. The accommodation comprises entrance hall, downstairs w.c., lounge diner, kitchen diner, three bedrooms, four piece bathroom, good size rear garden, ample off road parking and garage. Due to the plot shape and size then there may be potential to extend to the side of the property subject to the necessary consents.



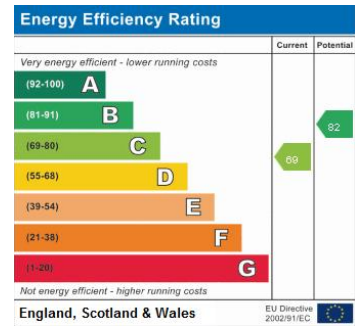
GROUND FLOOR
623 sq.ft. (57.9 sq.m.) approx.

1ST FLOOR
440 sq.ft. (40.9 sq.m.) approx.



TOTAL FLOOR AREA: 1063 sq.ft. (98.8 sq.m.) approx.

Whilst every attempt has been made to ensure the accuracy of the floorplan contained here, measurements of doors, windows, rooms and any other items are approximate and no responsibility is taken for any error, omission or mis-statement. This plan is for illustrative purposes only and should be used as such by any prospective purchaser. The services, systems and appliances shown have not been tested and no guarantee as to their operability or efficiency can be given.
Made with Metagis C023



- Detached Property
- Ideal Family Home
- Three Bedrooms
- Four Piece Bathroom
- Garage
- Ample Off Road Parking
- Generous Corner Plot
- Kitchen Diner