

Julian
Reid



177d Evering Road, London, N16 7BH

A bright and airy two bedroom flat arranged over the top floor of a large Victorian house. Located moments from Rectory Rd Station and a short stroll to both Stoke Newington High St and popular Church St. Available immediately and offered unfurnished.

£1,800 per calendar month

- **Two Bedrooms**
- **Council Tax Band: C**
- **EPC Rating: TBC**
- **Top Floor**
- **Victorian Conversion**

A bright and airy two bedroom flat arranged over the top floor of a large Victorian house, located moments from Rectory Rd Station and a short stroll to both Stoke Newington High St and popular Stoke Newington Church Street. Available immediately and offered unfurnished.

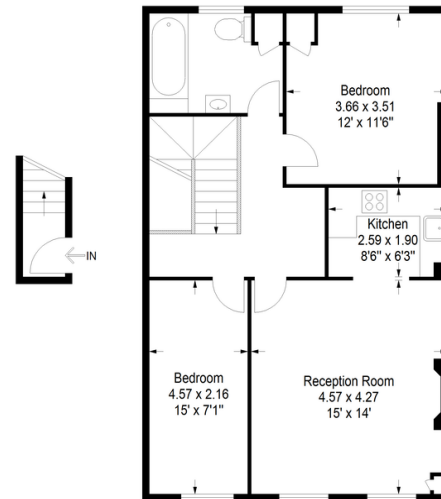


Julian Reid
51 Stoke Newington Church Street London N16 0AR
jreid@julianreid.co.uk Fax: 020 7923 8651
+44 (0) 20 7923 8650

Evering Road

Approximate Gross Internal Area

First Floor = 23 sq ft / 2.14 sq m
Second Floor = 717 sq ft / 66.61 sq m
Total = 740 sq ft / 68.75 sq m



First Floor

Second Floor

JULIAN REID SPECIAL DISCLAIMER--
For Illustration Purposes Only - Not To Scale
Floor plan For Julian Reid

Important notice: Julian Reid, their clients and any joint agents give notice that: 1: They are not authorized to make or give representations or warranties in relation to the property either here or elsewhere, either on their own behalf or on behalf of the client or otherwise. They assume no responsibility for any statement that may be made in these particulars. These particulars do not form part of any offer or contract and must not be relied upon as statements or representations of fact. 2: Any areas, measurements or distances are approximate. The text, photographs and plans are for guidance only and are not necessarily comprehensive. It should not be assumed that the property has all necessary planning, building regulation and other consents and Julian Reid have not tested any services, equipment or facilities. Purchasers must satisfy themselves by inspection or otherwise.



J352 Ravensworth 01670 713330