



68 Station Road, Copnor

Portsmouth

£220,000





68 Station Road

Copnor, Portsmouth

A lovely two bedroom house in this sought after residential area of Copnor is available to view. Beautifully presented, this property has neutral décor throughout, modern kitchen and wet room and is a ready to move into. Situated just minutes from local amenities on Copnor Road and Ocean Retail Park, good primary schools are within walking distance and the house is within the ALNS catchment. Easy access to the Eastern Road and recreation facilities at Baffins Pond and Great Salterns make this home a great place for all ages.

The front door opens straight into the Lounge area. The ground floor is then semi open plan with quality carpets in both reception areas. The front area has had the chimney breast removed which really opens up the space available. From here there is also an open arch with storage on either side which leads into the Dining area. This room has a rear facing window out to the garden and a stunning wood burning fire to make it nice and cosy in the Winter!

The kitchen has fitted wall and base cabinets with plenty of space for a washing machine and fridge-freezer. A rear lobby comes next with access into the west facing garden and also a door into the remodelled wetroom. It's modern, contemporary style is both great to look at and easy to use with plenty of space available if you wanted to change it back into a bathroom?

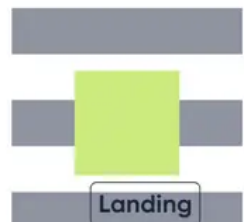
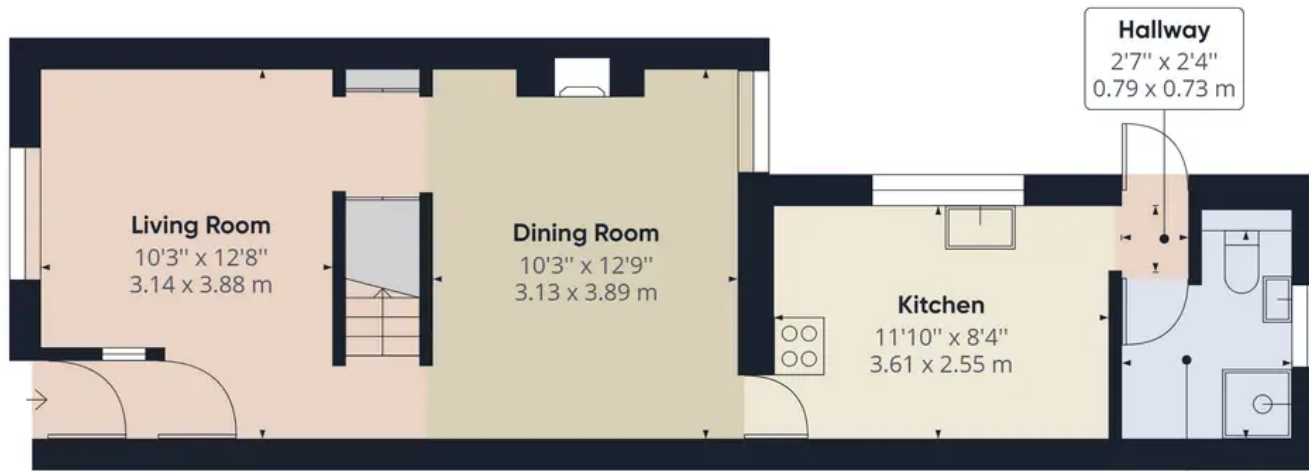
Upstairs are two double bedrooms. Both rooms are a great size and ready to move straight into.

The west facing garden is a good useable size, laid to lawn and the perfect space to spend time in when the sun does come out.

This home is beautifully presented and ready to move in and would be perfect for a FTB, someone looking to downsize or an investor looking for a ready to rent home.

Council Tax band: B Tenure: Freehold





Ground Floor
chinneck
shaw



Floor 1

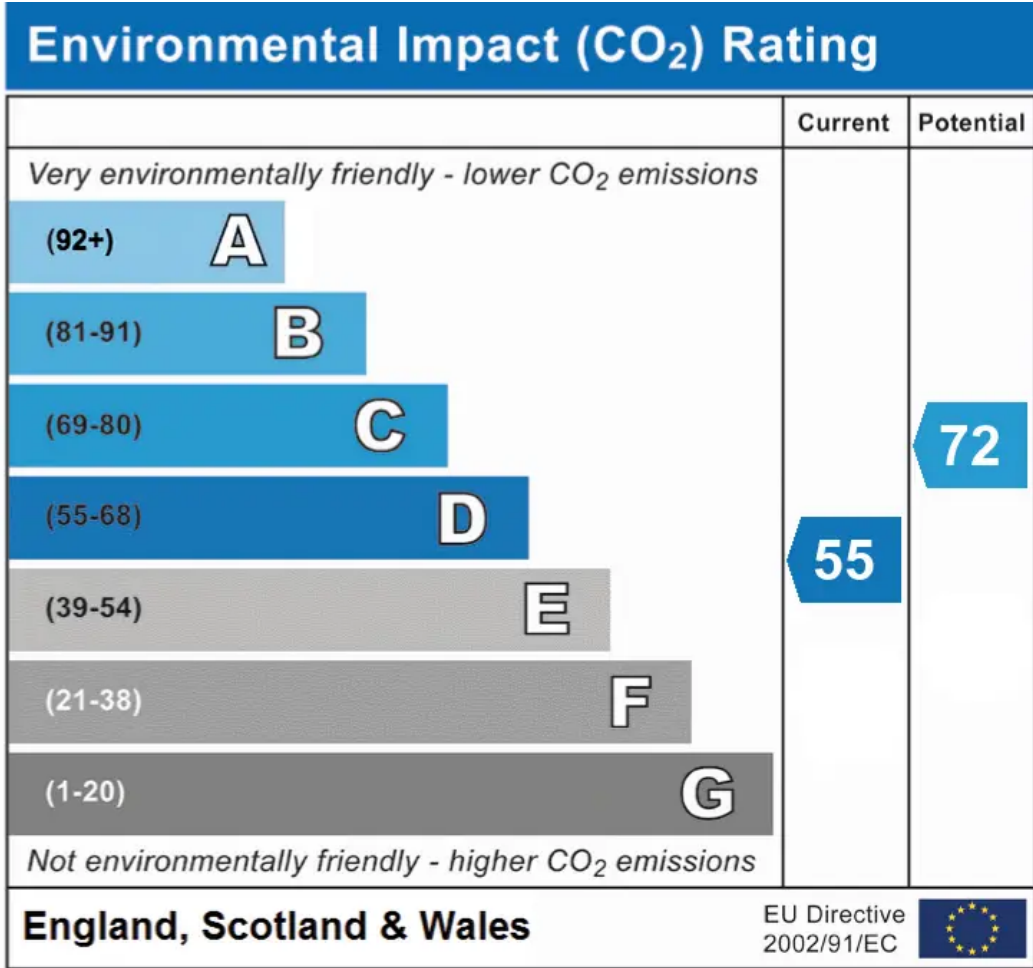
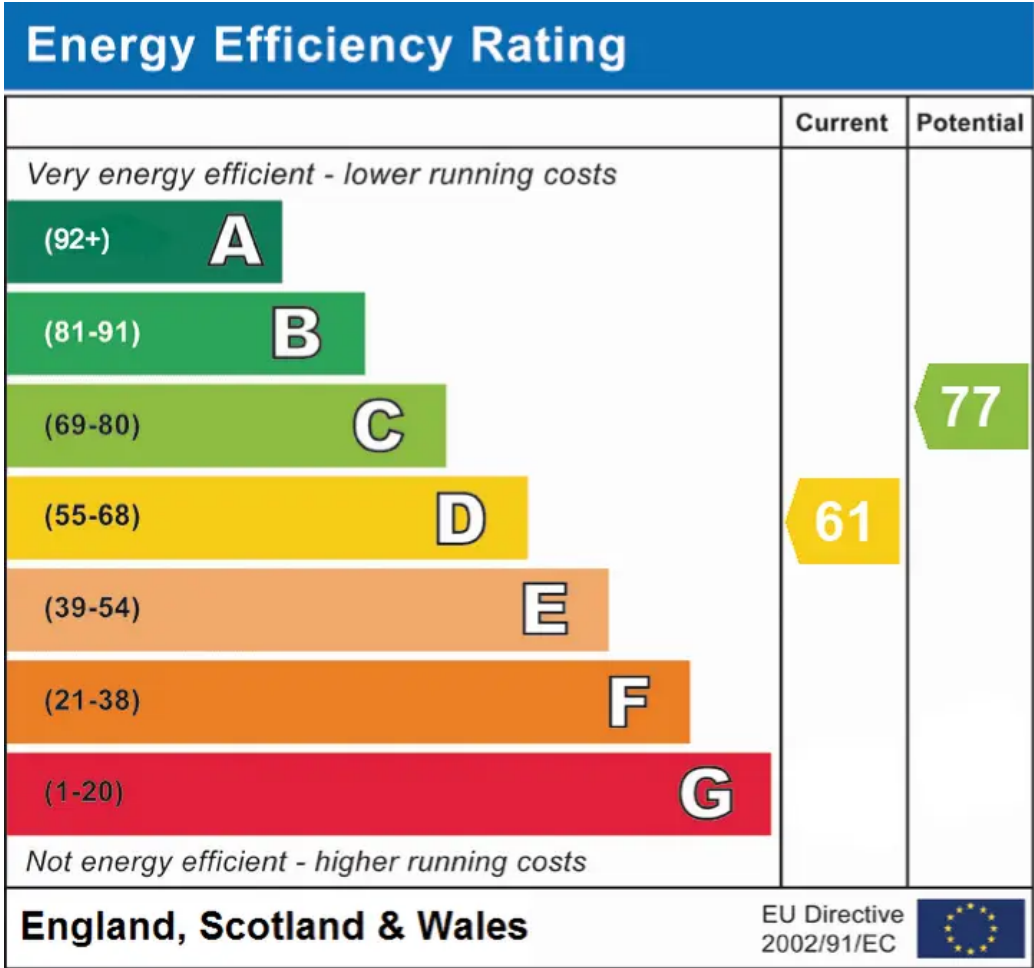
Approximate total area⁽¹⁾

712.62 ft²
66.20 m²

(1) Excluding balconies and terraces

While every attempt has been made to ensure accuracy, all measurements are approximate, not to scale. This floor plan is for illustrative purposes only.

GIRAFFE 360



Chinneck Shaw

Bridge House, Milton Road, Portsmouth – PO3 6AN

023 9282 6731

hello@chinneckshaw.co.uk

www.chinneckshaw.co.uk/

Chinneck Shaw, Bridge House, Milton Road, PO3 6AN Consumer Protection from Unfair Trading Regulations 2008: These details are for guidance only and complete accuracy cannot be guaranteed. If there is any point which is of particular importance, verification should be obtained. The do not constitute a contract or part of a contract. All measurements are approximate. No guarantee can be given with regard to planning permissions or fitness for purpose. No apparatus, equipment, fixture or fitting has been tested. Items shown in the photographs are NOT necessarily included. Interested Parties are advised to check availability and make an appointment to view before travelling to see a property.