



3 Bedroom Semi-Detached Offers Over £300,000

5 Woodland Close, Kingsdown Road , Swindon, Wiltshire, SN25 6AB

mcfarlane
property.com

3 Bedroom Semi-Detached Woodland Close, Swindon

- HIGHLY DESIRABLE LOCATION
- BEAUTIFULLY PRESENTED THROUGHOUT
- GENEROUS PLOT
- SOUTH FACING / NON OVERLOOKED GARDEN

Woodlands is an individual and stunning development of only ten properties which was built by Kingsdown Down farm development LTD to a very high standard throughout which has a premium look and feel. You are welcomed by a light and airy entrance hall which leads to the dual aspect living room and then the stunning kitchen / dining room with all the added features including a water softener and other built-in appliances. There is also a handy downstairs cloakroom. To the first floor are three good size bedrooms, with the master bedroom benefiting from an ensuite with stylish tiling providing a very modern feel. The family bathroom is also modern in design and spacious.

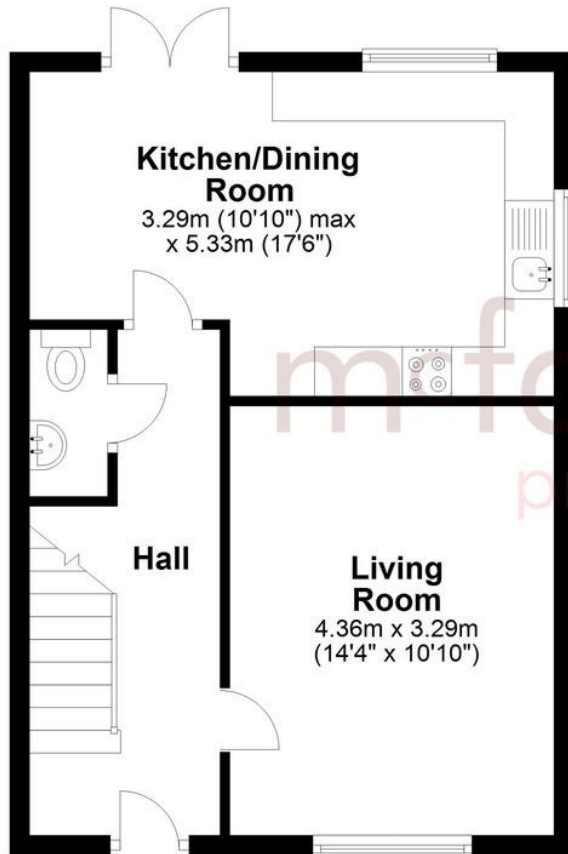
Other key features include two allocated parking spaces to the front, side access. a great size non-overlooked rear garden with extensive views over open green space. Air conditioning and solar panels are also worth a mention which are a few other examples of the high specification on offer.





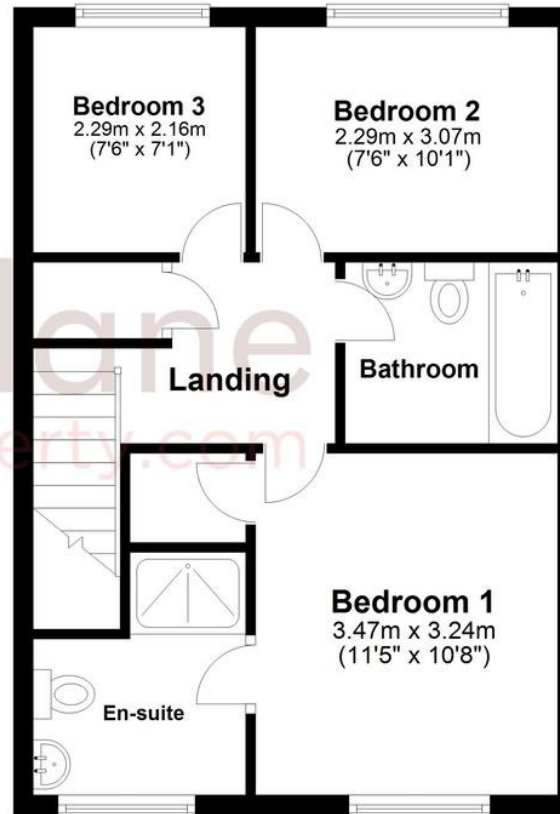
Ground Floor

Approx. 41.3 sq. metres (444.7 sq. feet)



First Floor

Approx. 42.2 sq. metres (453.8 sq. feet)



Total area: approx. 83.5 sq. metres (898.5 sq. feet)

We 
where you
LIVE

Our team are friendly, experienced and are all local. They know it better than they do their own living rooms and can help you find what you're looking for because **we love where we live.**

We would be delighted to show you around this property.

**Because every home
needs a personal touch.**

**If you would like to view this
property then please get in touch.**

 01793 296600

 swindon@mcfarlaneproperty.com

mcfarlaneproperty.com

mcfarlane
property.com

Cricklade.

102 High Street
Cricklade SN6 6AA

 01793 751044

Marlborough.

106 High Street
Marlborough SN8 1LT

 01672 514380

Old Town.

28-30 Wood Street
Swindon SN1 4AB

 01793 296880

Swindon.

The Village Centre,
Redhouse SN25 2FW

 01793 296600

Agents Note: Whilst every care has been taken to prepare these sales particulars, they are for guidance purposes only. All measurements are approximate are for general guidance purposes only and whilst every care has been taken to ensure their accuracy, they should not be relied upon and potential buyers are advised to recheck the measurements