



**Asking Price £980,000**

**Juniper Drive, SW18 1XY**

**Bedrooms : 2**

**Bathrooms : 2**

**Reception Rooms : 1**

**60 sqm huge terrace**

**24-hour concierge**

**River walk nearby**

**CHAMPS UK Property Asset Management**  
1/F, 3 More London Riverside, London Bridge, London SE1 2RE, UK  
[support@champs.co.uk](mailto:support@champs.co.uk) | 0203 300 1632  
Website: [champs.co.uk](http://champs.co.uk)

**CHAMPS**

This stunning apartment offers a 60 sqm Terrace abd located in DISCOVERY HOUSE - the latest phase at Battersea Reach, boasting an elite level specification & private balconies.

The property comprisea two double bedrooms with sleek en-suite bathrooms, substantial open-plan reception, dining area, breakfast bar, state-of-the-art kitchen. The elegant specification features fitted Siemens appliances, marble surfaces, integrated wardrobes, mood lighting, comfort cooling, wood floors, underfloor heating, floor-to-ceiling windows & utility cupboard.

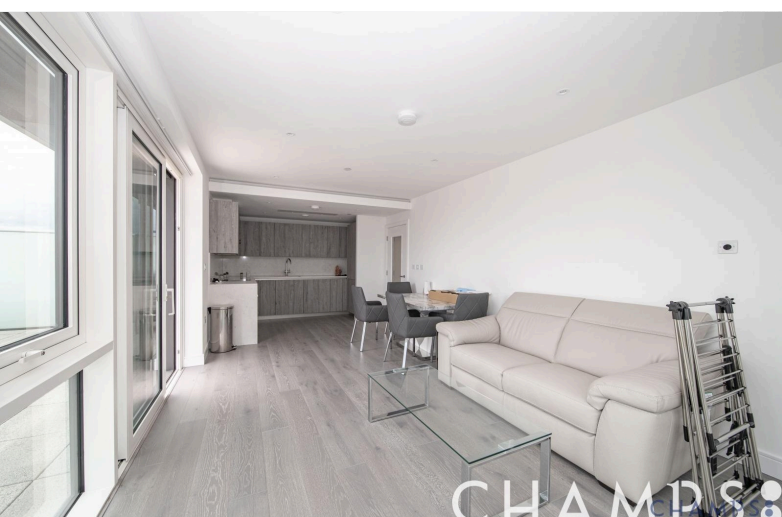
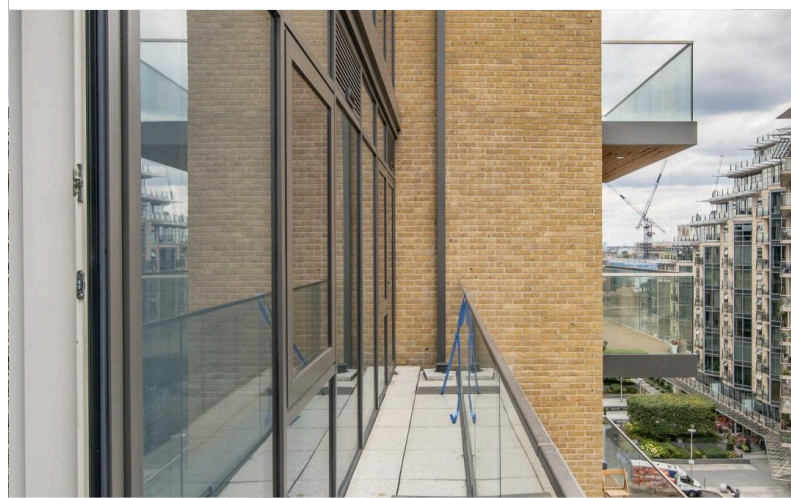
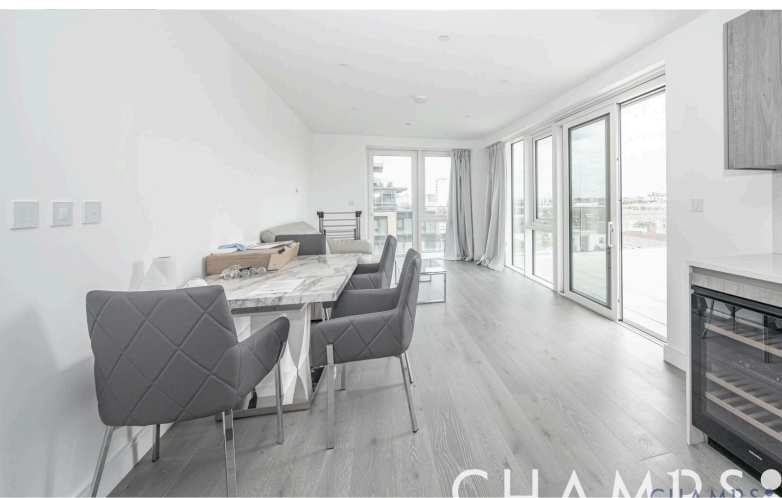
Available now on a fully furnished basis.

Battersea Reach is an award-winning riverside development, located moments from the transport links of Wandsworth Town & Clapham Junction. Residents benefit from 24-hour concierge & an exclusive gym, as well as on-site amenities like Tesco Express, Youngs Bar & Restaurant, Cake Boy Patisserie Café, yue float wellness centre, healthcare clinic & beauty salon.













# Energy Performance Certificate



Apartment 98 Discovery House, Juniper Drive, LONDON, SW18 1XY

**Dwelling type:** Mid-floor flat  
**Date of assessment:** 01 March 2019  
**Date of certificate:** 01 March 2019  
**Reference number:** 0498-8087-7357-6931-0940  
**Type of assessment:** SAP, new dwelling  
**Total floor area:** 74 m<sup>2</sup>

## Use this document to:

- Compare current ratings of properties to see which properties are more energy efficient

**Estimated energy costs of dwelling for 3 years:**

**£ 1,020**

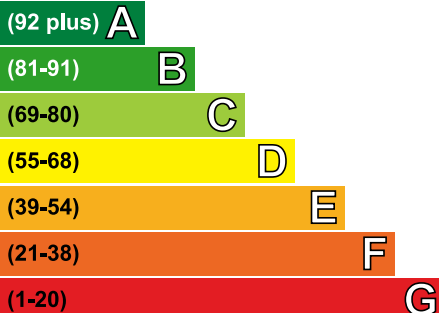
## Estimated energy costs of this home

	Current costs	Potential costs	Potential future savings
Lighting	£ 165 over 3 years	£ 165 over 3 years	Not applicable
Heating	£ 654 over 3 years	£ 654 over 3 years	
Hot Water	£ 201 over 3 years	£ 201 over 3 years	
<b>Totals</b>	<b>£ 1,020</b>	<b>£ 1,020</b>	

These figures show how much the average household would spend in this property for heating, lighting and hot water and is not based on energy used by individual households. This excludes energy use for running appliances like TVs, computers and cookers, and electricity generated by microgeneration.

## Energy Efficiency Rating

Very energy efficient - lower running costs



Current	Potential
82	82

The graph shows the current energy efficiency of your home.

The higher the rating the lower your fuel bills are likely to be.

The average energy efficiency rating for a dwelling in England and Wales is band D (rating 60).

The EPC rating shown here is based on standard assumptions about occupancy and energy use and may not reflect how energy is consumed by individual occupants.

## Summary of this home's energy performance related features

Element	Description	Energy Efficiency
Walls	Average thermal transmittance 0.3 W/m <sup>2</sup> K	★★★★★
Roof	Average thermal transmittance 0.2 W/m <sup>2</sup> K	★★★★☆
Floor	(other premises below)	—
Windows	High performance glazing	★★★★★
Main heating	Community scheme	★★★★★
Main heating controls	Charging system linked to use of community heating, programmer and TRVs	★★★★☆
Secondary heating	None	—
Hot water	Community scheme	★★★★★
Lighting	Low energy lighting in all fixed outlets	★★★★★
Air tightness	Air permeability 3.4 m <sup>3</sup> /h.m <sup>2</sup> (as tested)	★★★★☆

Thermal transmittance is a measure of the rate of heat loss through a building element; the lower the value the better the energy performance.

Air permeability is a measure of the air tightness of a building; the lower the value the better the air tightness.

Current primary energy use per square metre of floor area: 60 kWh/m<sup>2</sup> per year

## Low and zero carbon energy sources

Low and zero carbon energy sources are sources of energy that release either very little or no carbon dioxide into the atmosphere when they are used. Installing these sources may help reduce energy bills as well as cutting carbon. The following low or zero carbon energy sources are provided for this home:

- Combined heat and power
- Solar photovoltaics

## Your home's heat demand

This table shows the energy used for space and water heating by an average household in this property.

### Heat demand

Space heating (kWh per year)	2,295
Water heating (kWh per year)	1,686

If you built your own home and, as part of its construction, you installed a renewable heating system, you could receive Renewable Heat Incentive (RHI) payments. The estimated energy required for space and water heating will form the basis of the payments. For more information, search for the domestic RHI on the [www.gov.uk](http://www.gov.uk) website.

## Recommendations

None.

## About this document and the data in it

This document has been produced following an energy assessment undertaken by a qualified Energy Assessor, accredited by NES. You can obtain contact details of the Accreditation Scheme at [www.nesltd.co.uk](http://www.nesltd.co.uk).

A copy of this certificate has been lodged on a national register as a requirement under the Energy Performance of Buildings Regulations 2012 as amended. It will be made available via the online search function at [www.epcregister.com](http://www.epcregister.com). The certificate (including the building address) and other data about the building collected during the energy assessment but not shown on the certificate, for instance heating system data, will be made publicly available at [www.opendatacommunities.org](http://www.opendatacommunities.org).

This certificate and other data about the building may be shared with other bodies (including government departments and enforcement agencies) for research, statistical and enforcement purposes. Any personal data it contains will be processed in accordance with the General Data Protection Regulation and all applicable laws and regulations relating to the processing of personal data and privacy. For further information about this and how data about the property are used, please visit [www.epcregister.com](http://www.epcregister.com). To opt out of having information about your building made publicly available, please visit [www.epcregister.com/optout](http://www.epcregister.com/optout).

**Assessor's accreditation number:** NHER010150  
**Assessor's name:** Mr Christopher Forster  
**Phone number:** 020 3603 1600  
**E-mail address:** [lisa@hodkinsonconsultancy.com](mailto:lisa@hodkinsonconsultancy.com)  
**Related party disclosure:** No related party

There is more information in the guidance document *Energy Performance Certificates for the marketing, sale and let of dwellings* available on the Government website at: [www.gov.uk/government/collections/energy-performance-certificates](http://www.gov.uk/government/collections/energy-performance-certificates). It explains the content and use of this document, advises on how to identify the authenticity of a certificate and how to make a complaint.

## About the impact of buildings on the environment

One of the biggest contributors to global warming is carbon dioxide. The energy we use for heating, lighting and power in homes produces over a quarter of the UK's carbon dioxide emissions.

The average household causes about 6 tonnes of carbon dioxide every year. Based on this assessment, your home currently produces approximately 0.8 tonnes of carbon dioxide every year. You could reduce emissions by switching to renewable energy sources.

The environmental impact rating is a measure of a home's impact on the environment in terms of carbon dioxide (CO<sub>2</sub>) emissions based on standardised assumptions about occupancy and energy use. The higher the rating the less impact it has on the environment.

