



Offers In Excess Of £310,000

Flat 6 Stratton Lodge

79 Bulwer Road

Barnet

EN5 5EU

EPC Rating '74'

Council Tax Band C

- One Double Bedroom
 - Purpose Built Flat
 - Second Floor
 - Open Plan Kitchen/Reception Room
 - Family Bathroom/WC
 - Current EPC rating C
 - Allocated Parking
 - Sought After Location
-

Agents Note: Whilst every care has been taken to prepare these particulars, they are for guidance purposes only. All measurements are approximate and for general guidance purposes only and whilst every care has been taken to ensure their accuracy, they should not be relied upon and potential buyers/tenants are advised to recheck the measurements

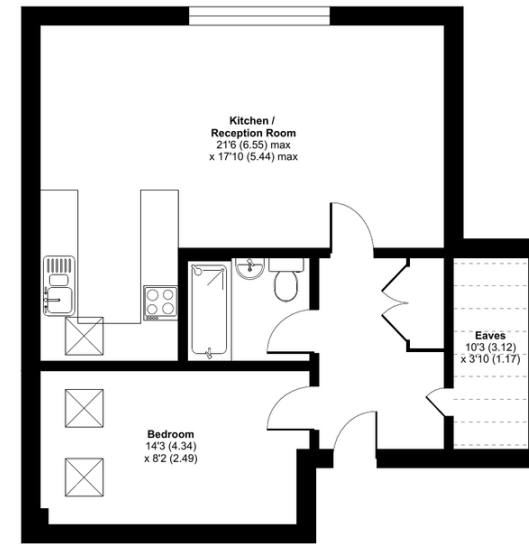
Stratton Lodge, Bulwer Road, Barnet, EN5

Approximate Area = 544 sq ft / 50.5 sq m

Limited Use Area = 40 sq ft / 3.7 sq m

Total = 584 sq ft / 54.2 sq m

For identification only - Not to scale



Denotes restricted head height



Floor plan produced in accordance with RICS Property Measurement Standards incorporating International Property Measurement Standards (IPMS2 Residential). ©richecom 2023. Produced for Spencer & Sener. REF: 942331