



**New
Mansion
Square**

BATTERSEA SW8

The Shared
Ownership
Collection

BILLINGTON MANSIONS



Take the tour

STUDIO



The studio apartments make the most of light and space, with floor-to-ceiling windows that encourage natural light to flood in. All of our apartments also come complete with private balconies and a concierge service for peace of mind and to make everyday life run more smoothly.

[VIEW THE 360° ▶](#)

Take the tour

TWO BEDROOM

Our one and two-bedroom apartments strike the perfect balance between style and functionality, with a contemporary finish throughout and an open-plan flexible layout that you can make your own.

[VIEW THE 360° ▶](#)



LIVING/KITCHEN/DINING

Contemporary high gloss handleless kitchen with dust grey base units and light grey wall units

Composite stone worktops in grey with corresponding upstand & splashback

Stainless steel undermounted sink

Single lever chrome mixer tap

Integrated appliances: AEG black glass ceramic hob, AEG single electric oven (A), Zanussi extractor hood (D), fridge/freezer (A+) and dishwasher (A+)*

BATHROOM

Large format porcelain stone floor and wall tiles

Inset white bath with stone grey removable bath panel and part fixed shower screen

Polished chrome dual control mixer tap and fixed panel bath screen

Bristan shower with easy clean smooth hose

Geberit WC with soft close seat and concealed cistern

Geberit square semi-recessed hand basin with polished chrome mixer tap

Vanity unit in stone grey

Stelrad chrome heated towel rail

BEDROOM

Built-in wardrobe to main bedroom with white glass and stone grey sliding soft close doors and chrome hanging rail and brackets

INTERIOR FINISHES

Light matt laminate flooring in Soft Oak to hallways, kitchen/living/dining room and studio bedrooms

High quality grey carpet in bedrooms*

Polished stainless steel ironmongery

Painted white wooden doors

White satinwood finish to woodwork and skirting

White paint finish to walls and ceilings throughout

ELECTRICAL

Zanussi Washer Dryer located in storage cupboard

Recessed LED downlighters in white

Pendant lighting to bedrooms***

White switches and sockets

TV connection points to living room and main bedroom

Pre-wired for Virgin media††

Black graphite balcony lights on private outside areas

SECURITY AND PEACE OF MIND

Solid entrance door with multi-point lock

Access to apartments via audio visual door entry system

Mains operated smoke detectors

10-year NHBC warranty cover

2 year defect warranty from practical completion date**

990-year lease

HEATING

Heating and hot water provided by central plant and charged separately

ENERGY EFFICIENCY

Predicted Energy Assessment Level 84 under SAP 2012

EXTERIOR

Landscaped areas, trees and pathways

Cycle stands and cycle stores

Concierge service

7:00am to 9.30pm weekdays and 8am to 4pm weekends

SUSTAINABILITY

Within the ultra low emission zone

Cycle and walking routes in the area

Large cycle store accessible via fob

Green and brown roofs to development

Water butts on site to water the garden

Attenuation tank, permeable paving and swales in the landscaping for drainage

Mechanical ventilation to apartments

Double glazing and good levels of insulation

Bin stores for general waste and recycling bins

GENERAL

Zip Car Club

Pet-friendly development†



*Half size dishwashers added to selected apartments. Please speak to your sales advisor for further info. **2-year defect warranty commences from practical completion of each apartment, which may differ from your purchase date. *** Only to 1 & 2 bedroom apartments not in Studios. † up to 2 dogs and/or cats. †† Virgin media is a service that needs to be paid for separately. † Only applicable to 1 and 2 bedroom apartments. Whilst every effort has been taken to ensure the accuracy of the information provided, it has been supplied as a guide and Peabody reserve the right to amend the specification as necessary and without notice. Specification may vary on shared ownership homes. Peabody Show Apartment images are indicative only and are used as a guide to the craftsmanship and finish.

FIND THE PERFECT PLACE

Building Storeys

Matkin Mansions	9 storeys
Simper Mansions	10 storeys
Higgs Mansions	9 storeys
Tweed Mansions	13 storeys
Foots Row Mansions	18 storeys
Billington Mansions	13 storeys
Arden Mansions	15 storeys

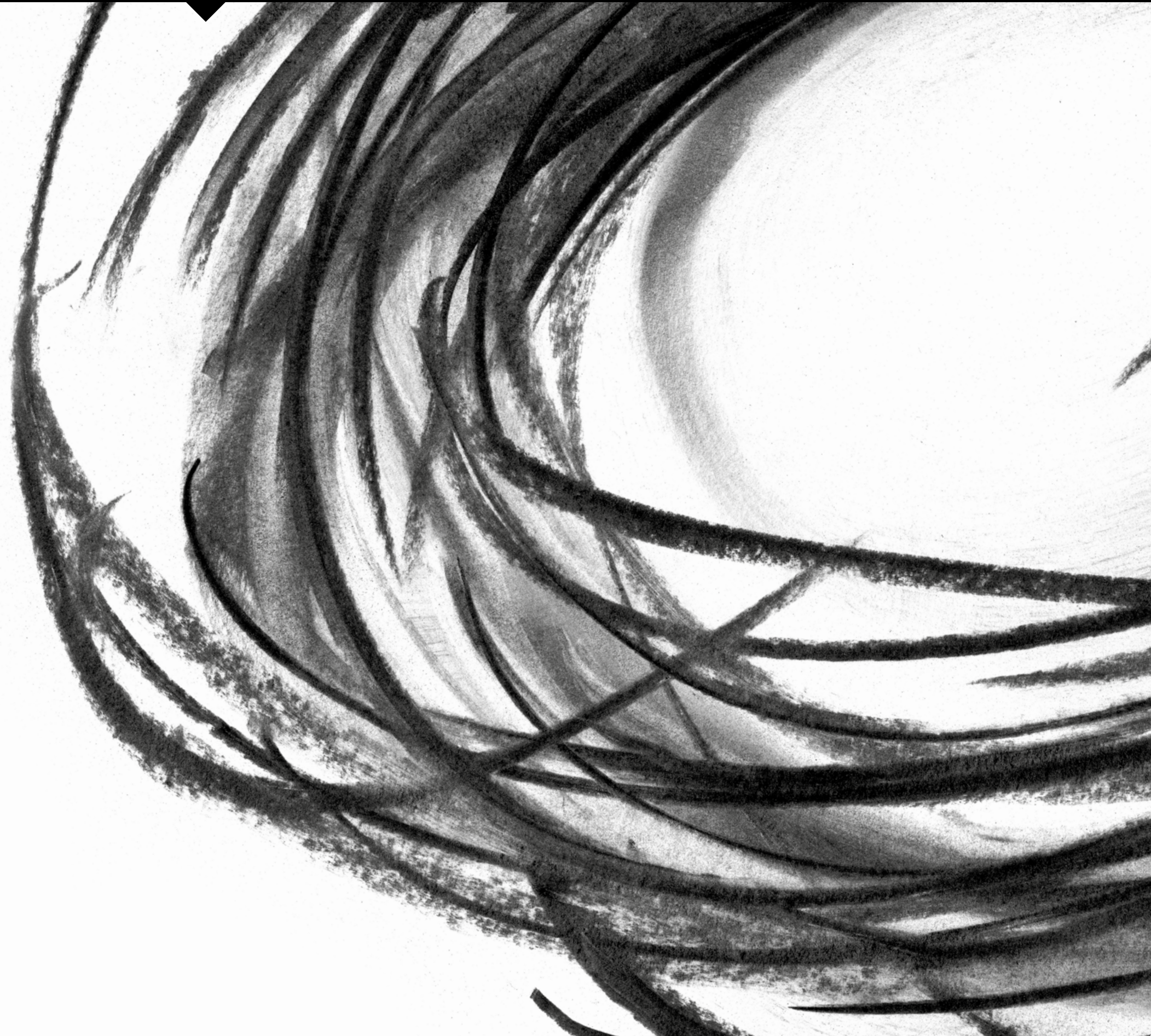


BILLINGTON MANSIONS

[STUDIO →](#)

[ONE BEDROOM →](#)

[TWO BEDROOM →](#)



STUDIO BILLINGTON MANSIONS

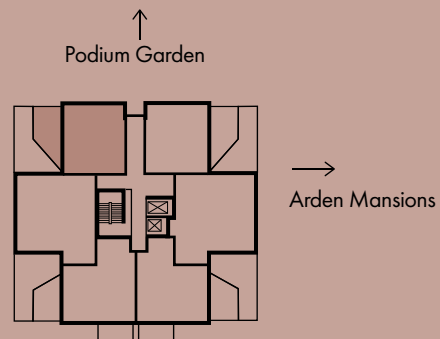
Apartment 2

Total Internal Area 47.5m² / 511ft²

Total External Area 15.5m² / 166.8ft²

Living/Dining/Kitchen	3.1m x 7.2m	10'3" x 23'8"
Bedroom	2.7m x 3.8m	8'9" x 12'5"
Bathroom	2.0m x 2.2m	6'5" x 7'2"
Terrace	2.8m x 5.2m	9'4" x 17'3"

Floor	Apt. No.
1	2



S - Storage
WD - Washer Dryer
W - Built-in wardrobe
FF - Fridge/Freezer

DW - Dishwasher
HIU - Heat Interface Unit
MVHR - Mechanical Heat Recovery Unit

[Jump to Site Plan](#)



STUDIO BILLINGTON MANSIONS

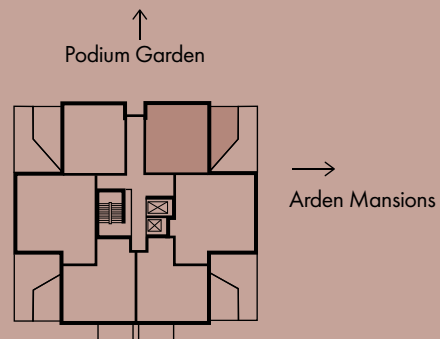
Apartment 3

Total Internal Area 47.1m² / 507ft²

Total External Area 14.6m² / 157ft²

Living/Dining/Kitchen	4.1m x 7.2m	13'6" x 23'8"
Bedroom	2.7m x 3.7m	8'9" x 12'3"
Bathroom	2.0m x 2.2m	6'5" x 7'2"
Terrace	2.6m x 5.2m	8'8" x 17'1"

Floor	Apt. No.
1	3



S - Storage
WD - Washer Dryer
W - Built-in wardrobe
FF - Fridge/Freezer

DW - Dishwasher
HIU - Heat Interface Unit
MVHR - Mechanical Heat Recovery Unit



[Jump to Site Plan](#)



ONE BEDROOM BILLINGTON MANSIONS

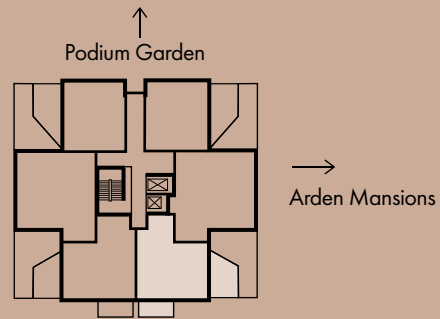
Apartment 5

Total Internal Area 50.7m² / 545.7ft²

Total External Area 11.0m² / 118.4ft²

Living/Dining/Kitchen	4.4m x 5.0m	14'5" x 16'7"
Bedroom	2.9m x 4.2m	9'5" x 13'8"
Bathroom	2.0m x 2.1m	6'5" x 6'8"
Terrace	2.6m x 4.1m	8'5" x 13'7"

Floor	Apt. No.
1	5



S - Storage
WD - Washer Dryer
W - Built-in wardrobe
FF - Fridge/Freezer

DW - Dishwasher
HIU - Heat Interface Unit
MVHR - Mechanical Heat Recovery Unit



[Jump to Site Plan](#)



ONE BEDROOM BILLINGTON MANSIONS

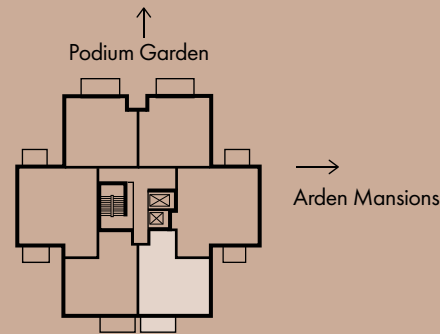
Apartments 11, 17, 23, 29, 35 & 41

Total Internal Area 50.7m² / 545.7ft²

Total External Area 5.01m² / 53.9ft²

Living/Dining/Kitchen	4.4m x 5.0m	14'5" x 16'7"
Bedroom	2.9m x 4.2m	9'5" x 13'8"
Bathroom	2.1m x 1.9m	6'8" x 6'5"
Balcony	3.2m x 1.5m	10'7" x 5'0"

Floor	Apt. No.
2	11
3	17
4	23
5	29
6	35
7	41



S - Storage
WD - Washer Dryer
W - Built-in wardrobe
FF - Fridge/Freezer

DW - Dishwasher
HIU - Heat Interface Unit
MVHR - Mechanical Heat Recovery Unit



[Jump to Site Plan](#) →

ONE BEDROOM BILLINGTON MANSIONS

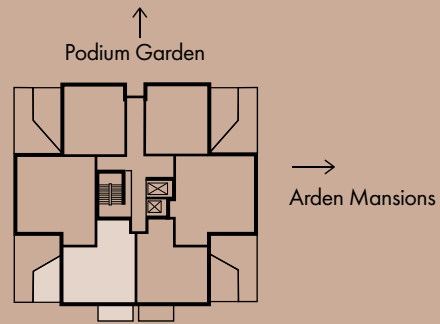
Apartment 6

Total Internal Area 53.4m² / 574ft²

Total External Area 10.4m² / 111.9ft²

Living/Dining/Kitchen	3.9m x 6.1m	13'0" x 20'3"
Bedroom	3.3m x 3.6m	11'1" x 11'9"
Bathroom	2.0m x 2.1m	6'5" x 6'8"
Terrace	2.5m x 4.1m	8'3" x 13'4"

Floor	Apt. No.
1	6



S - Storage
WD - Washer Dryer
W - Built-in wardrobe
FF - Fridge/Freezer

DW - Dishwasher
HIU - Heat Interface Unit
MVHR - Mechanical Heat Recovery Unit



[Jump to Site Plan](#)



ONE BEDROOM BILLINGTON MANSIONS

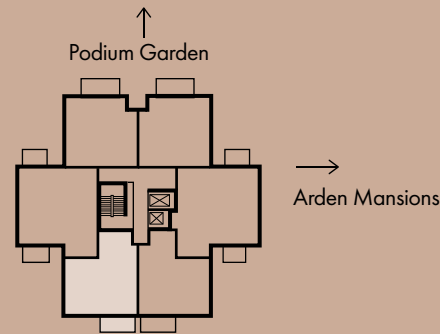
Apartments 12, 18, 24, 30, 36 & 42

Total Internal Area 53.4m² / 574ft²

Total External Area 5.0m² / 53.9ft²

Living/Dining/Kitchen	3.9m x 6.1m	13'0" x 20'3"
Bedroom	3.3m x 3.6m	11'1" x 11'9"
Bathroom	2.0m x 2.1m	6'5" x 6'8"
Balcony	3.2m x 1.5m	10'7" x 5'0"

Floor	Apt. No.
2	12
3	18
4	24
5	30
6	36
7	42



S - Storage
WD - Washer Dryer
W - Built-in wardrobe
FF - Fridge/Freezer

DW - Dishwasher
HIU - Heat Interface Unit
MVHR - Mechanical Heat Recovery Unit

[Jump to Site Plan](#)



ONE BEDROOM BILLINGTON MANSIONS

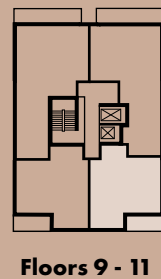
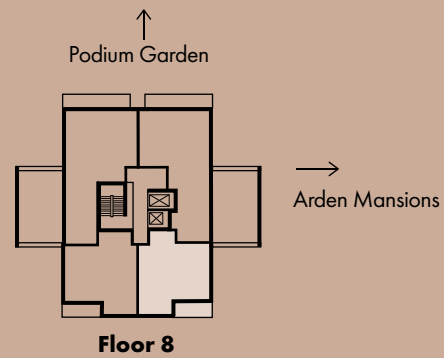
Apartments 45, 49, 53 & 57

Total Internal Area 52.2m² / 561.1ft²

Total External Area 5.1m² / 55.5ft²

Living/Dining/Kitchen	4.1m x 5.8m	13'6" x 19'1"
Bedroom	3.3m x 4.0m	11'3" x 13'1"
Bathroom	2.0m x 2.2m	6'5" x 7'2"
Balcony	3.9m x 1.4m	12'9" x 4'8"

Floor	Apt. No.
8	45
9	49
10	53
11	57



S - Storage
WD - Washer Dryer
W - Built-in wardrobe
FF - Fridge/Freezer

DW - Dishwasher
HIU - Heat Interface Unit
MVHR - Mechanical Heat Recovery Unit



[Jump to Site Plan](#)



ONE BEDROOM BILLINGTON MANSIONS

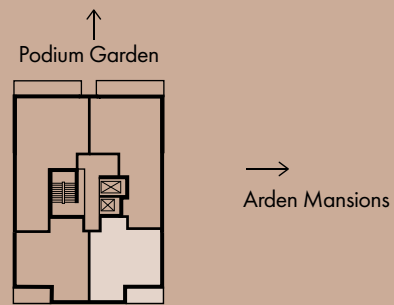
Apartment 61

Total Internal Area 52.2m² / 561.1ft²

Total External Area 5.1m² / 55.5ft²

Living/Dining/Kitchen	4.1m x 5.8m	13'6" x 19'1"
Bedroom	3.3m x 4.0m	11'3" x 13'1"
Bathroom	2.0m x 2.2m	6'5" x 7'2"
Balcony	3.9m x 1.4m	12'9" x 4'8"

Floor	Apt. No.
12	61



S - Storage
WD - Washer Dryer
W - Built-in wardrobe
FF - Fridge/Freezer

DW - Dishwasher
HIU - Heat Interface Unit
MVHR - Mechanical Heat Recovery Unit



[Jump to Site Plan](#)



ONE BEDROOM BILLINGTON MANSIONS

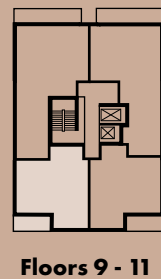
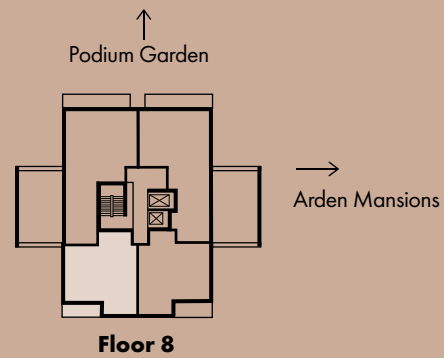
Apartments 46, 50, 54 & 58

Total Internal Area 52.7m² / 566.5ft²

Total External Area 5.2m² / 55.9ft²

Living/Dining/Kitchen	4.2m x 5.5m	13'8" x 18'3"
Bedroom	3.4m x 3.8m	11'2" x 12'6"
Bathroom	2.0m x 2.2m	6'5" x 7'2"
Balcony	3.9m x 1.4m	12'9" x 4'8"

Floor	Apt. No.
8	46
9	50
10	54
11	58



S - Storage
WD - Washer Dryer
W - Built-in wardrobe
FF - Fridge/Freezer

DW - Dishwasher
HIU - Heat Interface Unit
MVHR - Mechanical Heat Recovery Unit



[Jump to Site Plan](#) →

ONE BEDROOM BILLINGTON MANSIONS

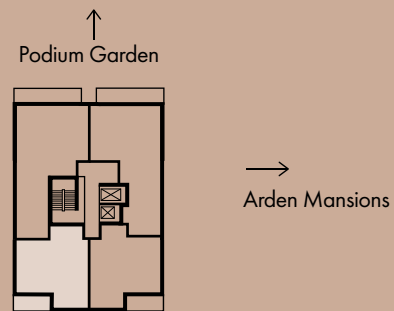
Apartment 62

Total Internal Area 52.7m² / 566.5ft²

Total External Area 5.2m² / 55.9ft²

Living/Dining/Kitchen	4.2m x 5.5m	13'8" x 18'3"
Bedroom	3.4m x 3.8m	11'2" x 12'6"
Bathroom	2.0m x 2.2m	6'5" x 7'2"
Balcony	3.9m x 1.4m	12'9" x 4'8"

Floor	Apt. No.
12	62



S - Storage
WD - Washer Dryer
W - Built-in wardrobe
FF - Fridge/Freezer

DW - Dishwasher
HIU - Heat Interface Unit
MVHR - Mechanical Heat Recovery Unit



[Jump to Site Plan](#)



ONE BEDROOM BILLINGTON MANSIONS

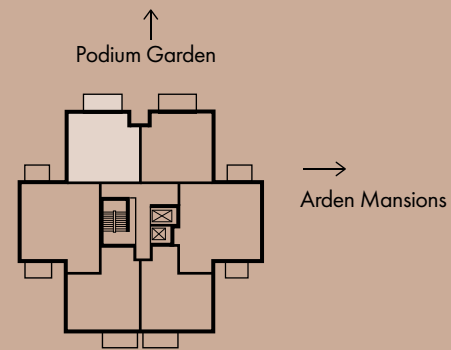
Apartments 8, 14, 20, 26, 32 & 38

Total Internal Area 52.4m² / 564ft²

Total External Area 5.1m² / 55.7ft²

Living/Dining/Kitchen	4.0m x 7.2m	13'1" x 23'9"
Bedroom	3.3m x 5.0m	11'0" x 16'6"
Bathroom	2.0m x 2.2m	7'2" x 6'5"
Balcony	3.3m x 1.5m	11'1" x 5'0"

Floor	Apt. No.
2	8
3	14
4	20
5	26
6	32
7	38



S - Storage
WD - Washer Dryer
W - Built-in wardrobe
FF - Fridge/Freezer

DW - Dishwasher
HIU - Heat Interface Unit
MVHR - Mechanical Heat Recovery Unit

[Jump to Site Plan](#)



ONE BEDROOM BILLINGTON MANSIONS

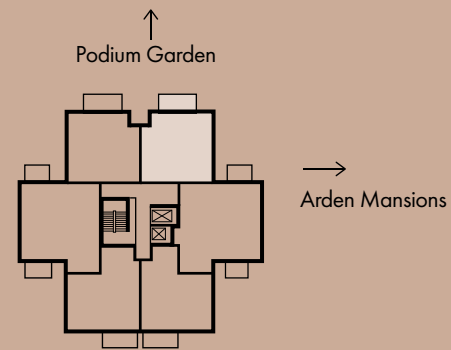
Apartments 9, 15, 21, 27, 33 & 39

Total Internal Area 52.1m² / 561ft²

Total External Area 5.1m² / 55.7ft²

Living/Dining/Kitchen	4.0m x 7.2m	13'1" x 23'9"
Bedroom	3.3m x 5.0m	11'0" x 16'6"
Bathroom	2.2m x 2.0m	7'2" x 6'5"
Balcony	3.3m x 1.5m	11'1" x 5'0"

Floor	Apt. No.
2	9
3	15
4	21
5	27
6	33
7	39



S - Storage
WD - Washer Dryer
W - Built-in wardrobe
FF - Fridge/Freezer

DW - Dishwasher
HIU - Heat Interface Unit
MVHR - Mechanical Heat Recovery Unit

[Jump to Site Plan](#)



TWO BEDROOM BILLINGTON MANSIONS

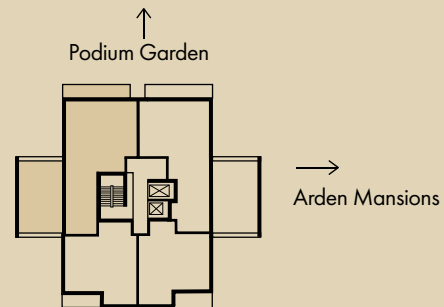
Apartment 43

Total Internal Area 75.4m² / 810.5ft²

Total External Area 40.5m² / 436ft²

Living/Dining/Kitchen	7.6m x 4.5m	25'1" x 14'9"
Bedroom 1	3.5m x 4.6m	11'6" x 15'1"
Bedroom 2	3.3m x 3.8m	10'9" x 12'6"
Bathroom	2.2m x 2.1m	7'2" x 6'8"
Balcony	6.9m x 1.3m	23'0" x 4'4"
Terrace	4.3m x 7.4m	14'4" x 25'7"

Floor	Apt. No.
8	43



S - Storage
WD - Washer Dryer
W - Built-in wardrobe
FF - Fridge/Freezer
TU - Tall Unit

DW - Dishwasher
HIU - Heat Interface Unit
MVHR - Mechanical Heat Recovery Unit



[Jump to Site Plan](#)



TWO BEDROOM BILLINGTON MANSIONS

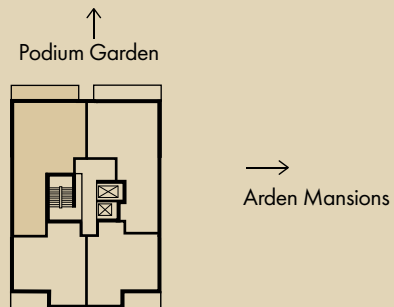
Apartments 47, 51 & 55

Total Internal Area 75.4m² / 810.5ft²

Total External Area 7.8m² / 84ft²

Living/Dining/Kitchen	7.6m x 4.5m	25'1" x 14'9"
Bedroom 1	3.5m x 4.6m	11'6" x 15'1"
Bedroom 2	3.3m x 3.8m	10'9" x 12'6"
Bathroom	2.2m x 2.1m	7'2" x 6'8"
Balcony	6.9m x 1.3m	23'0" x 4'4"

Floor	Apt. No.
9	47
10	51
11	55



- S - Storage
- WD - Washer Dryer
- W - Built-in wardrobe
- FF - Fridge/Freezer
- TU - Tall Unit
- DW - Dishwasher
- HIU - Heat Interface Unit
- MVHR - Mechanical Heat Recovery Unit

[Jump to Site Plan](#) →



TWO BEDROOM BILLINGTON MANSIONS

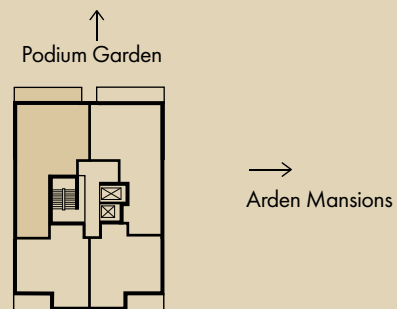
Apartment 59

Total Internal Area 75.4m² / 810.5ft²

Total External Area 7.8m² / 84ft²

Living/Dining/Kitchen	7.6m x 4.5m	25'1" x 14'9"
Bedroom 1	3.5m x 4.6m	11'6" x 15'1"
Bedroom 2	3.3m x 3.8m	10'9" x 12'6"
Bathroom	2.2m x 2.1m	7'2" x 6'8"
Balcony	6.9m x 1.3m	23'0" x 4'4"

Floor	Apt. No.
12	59



S - Storage
WD - Washer Dryer
W - Built-in wardrobe
FF - Fridge/Freezer
TU - Tall Unit

DW - Dishwasher
HIU - Heat Interface Unit
MVHR - Mechanical Heat Recovery Unit

[Jump to Site Plan](#)



TWO BEDROOM BILLINGTON MANSIONS

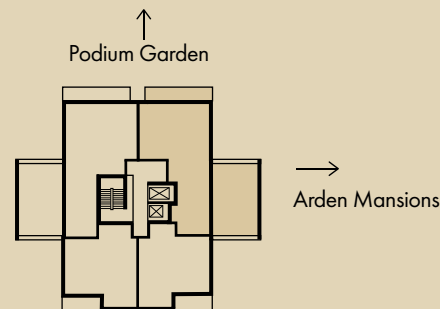
Apartment 44

Total Internal Area 73m² / 785.7ft²

Total External Area 42.8m² / 460.7ft²

Living/Dining	3.8m x 4.7m	12'6" x 15'6"
Kitchen	2.0m x 5.2m	6'5" x 17'1"
Bedroom 1	3.4m x 3.6m	11'3" x 11'8"
Bedroom 2	3.8m x 3.5m	12'7" x 11'7"
Bathroom	2.2m x 2.0m	7'2" x 6'5"
Balcony	7.0m x 1.3m	23'0" x 4'5"
Terrace	4.7m x 7.3m	15'5" x 24'2"

Floor	Apt. No.
8	44



S - Storage
WD - Washer Dryer
W - Built-in wardrobe
FF - Fridge/Freezer
TU - Tall Unit

DW - Dishwasher
HIU - Heat Interface Unit
MVHR - Mechanical Heat Recovery Unit

[Jump to Site Plan](#)



TWO BEDROOM BILLINGTON MANSIONS

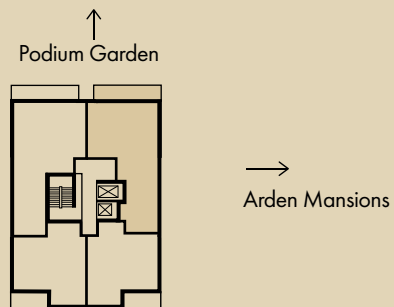
Apartments 48, 52 & 56

Total Internal Area 73m² / 785.7ft²

Total External Area 7.8m² / 84ft²

Living/Dining	3.8m x 4.7m	12'6" x 15'6"
Kitchen	2.0m x 5.2m	6'5" x 17'1"
Bedroom 1	3.4m x 3.6m	11'3" x 11'8"
Bedroom 2	3.8m x 3.5m	12'7" x 11'7"
Bathroom	2.2m x 2.0m	7'2" x 6'5"
Balcony	7.0m x 1.3m	23'0" x 4'5"

Floor	Apt. No.
9	48
10	52
11	56



S - Storage
WD - Washer Dryer
W - Built-in wardrobe
FF - Fridge/Freezer
TU - Tall Unit

DW - Dishwasher
HIU - Heat Interface Unit
MVHR - Mechanical Heat Recovery Unit

[Jump to Site Plan](#)



TWO BEDROOM BILLINGTON MANSIONS

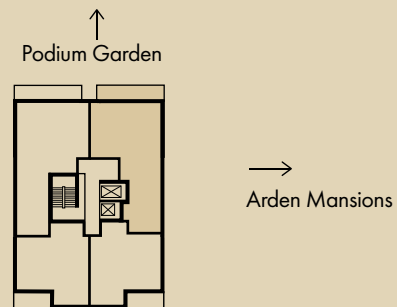
Apartment 60

Total Internal Area 73m² / 785.7ft²

Total External Area 7.8m² / 84ft²

Living/Dining	3.8m x 4.7m	12'6" x 15'6"
Kitchen	2.0m x 5.2m	6'5" x 17'1"
Bedroom 1	3.4m x 3.6m	11'3" x 11'8"
Bedroom 2	3.8m x 3.5m	12'7" x 11'7"
Bathroom	2.2m x 2.0m	7'2" x 6'5"
Balcony	7.0m x 1.3m	23'0" x 4'5"

Floor	Apt. No.
12	60



- S - Storage
- WD - Washer Dryer
- W - Built-in wardrobe
- FF - Fridge/Freezer
- TU - Tall Unit
- DW - Dishwasher
- HIU - Heat Interface Unit
- MVHR - Mechanical Heat Recovery Unit

[Jump to Site Plan](#)



TWO BEDROOM BILLINGTON MANSIONS

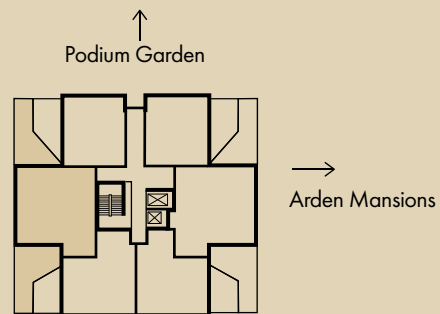
Apartment 1

Total Internal Area 70.4m² / 758ft²

Total External Area 38.1m² / 410.4ft²

Living/Dining/Kitchen	5.0m x 4.9m	16'6" x 16'3"
Bedroom 1	4.2m x 2.8m	14'0" x 9'3"
Bedroom 2	3.9m x 3.5m	12'9" x 11'7"
Bathroom	2.0m x 2.2m	6'5" x 7'2"
Terrace 1	3.4m x 6.8m	11'2" x 22'4"
Terrace 2	3.1m x 6.7m	10'3" x 22'3"

Floor	Apt. No.
1	1



S - Storage
WD - Washer Dryer
W - Built-in wardrobe
FF - Fridge/Freezer
TU - Tall Unit

DW - Dishwasher
HIU - Heat Interface Unit
MVHR - Mechanical Heat Recovery Unit

[Jump to Site Plan](#)



TWO BEDROOM BILLINGTON MANSIONS

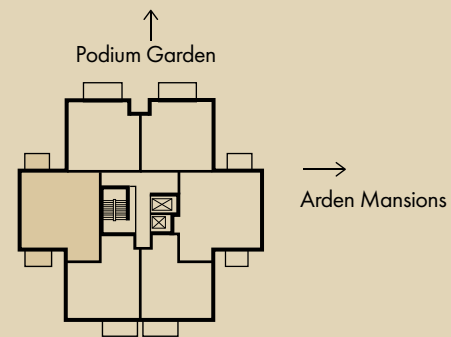
Apartments 7, 13, 19, 25, 31 & 37

Total Internal Area 70.4m² / 758ft²

Total External Area 7.9m² / 85.6ft²

Living/Dining/Kitchen	5.0m x 4.9m	16'6" x 16'3"
Bedroom 1	4.2m x 2.8m	14'0" x 9'3"
Bedroom 2	3.9m x 3.5m	12'9" x 11'7"
Bathroom	2.0m x 2.2m	6'5" x 7'2"
Balcony 1	2.6m x 1.5m	8'5" x 5'0"
Balcony 2	2.6m x 1.5m	8'5" x 5'0"

Floor	Apt. No.
2	7
3	13
4	19
5	25
6	31
7	37



- S - Storage
- WD - Washer Dryer
- W - Built-in wardrobe
- FF - Fridge/Freezer
- TU - Tall Unit
- DW - Dishwasher
- HIU - Heat Interface Unit
- MVHR - Mechanical Heat Recovery Unit

[Jump to Site Plan](#) →

TWO BEDROOM BILLINGTON MANSIONS

Apartment 4

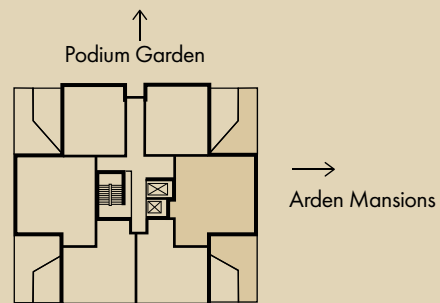


Total Internal Area 77.5m² / 834ft²

Total External Area 21.2m² / 228ft²

Living/Dining/Kitchen	5.3m x 5.0m	17'6" x 16'4"
Bedroom 1	4.9m x 2.8m	16'1" x 9'2"
Bedroom 2	3.8m x 4.0m	12'7" x 13'1"
Bathroom	2.2m x 2.6m	7'2" x 8'5"
Terrace 1	3.3m x 6.8m	11'0" x 22'4"
Terrace 2	4.4m x 6.8m	14'6" x 22'4"

Floor	Apt. No.
1	4




- S - Storage
- WD - Washer Dryer
- W - Built-in wardrobe
- FF - Fridge/Freezer
- TU - Tall Unit
- DW - Dishwasher
- HIU - Heat Interface Unit
- MVHR - Mechanical Heat Recovery Unit

[Jump to Site Plan](#)



TWO BEDROOM BILLINGTON MANSIONS

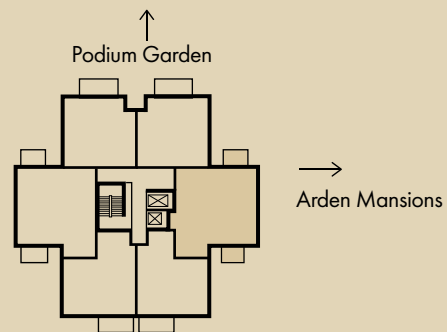
Apartments 10, 16, 22, 28, 34 & 40 

Total Internal Area 77.5m² / 834ft²

Total External Area 7.77m² / 83.6ft²

Living/Dining/Kitchen	5.3m x 5.0m	17'6" x 16'4"
Bedroom 1	4.9m x 2.8m	16'1" x 9'2"
Bedroom 2	3.8m x 4.0m	12'7" x 13'1"
Bathroom	2.2m x 2.6m	7'2" x 8'5"
Balcony 1	2.4m x 1.5m	8'1" x 5'0"
Balcony 2	2.6m x 1.5m	8'5" x 5'0"

Floor	Apt. No.
2	10
3	16
4	22
5	28
6	34
7	40



S - Storage
WD - Washer Dryer
W - Built-in wardrobe
FF - Fridge/Freezer
TU - Tall Unit

DW - Dishwasher
HIU - Heat Interface Unit
MVHR - Mechanical Heat Recovery Unit

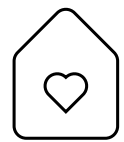


[Jump to Site Plan](#)



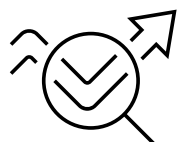
Ready to buy?

THE SHARED OWNERSHIP JOURNEY IS SIMPLE...



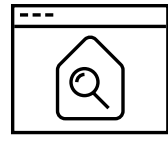
1

Register your interest in New Mansion Square and complete the application form



2

Take a quick financial assessment to ensure you meet all the criteria



3

Attend your viewing, this could be in person or virtually and pay a reservation fee.



4

We will confirm whether we are able to offer you a Shared Ownership home with an offer letter



5

Take a full financial assessment with an Independent Mortgage Advisor (IMA) from our selected panel of experts, appoint a Solicitor & Mortgage Advisor and complete an Offer Acceptance Form



6

Submit a mortgage application within two working days of your financial assessment and a Peabody's solicitor and your solicitor will organise the legal paperwork so contracts can exchange



7

On completion day, the money to buy your home is transferred to our solicitors. You now legally own your home through Shared Ownership!



8

Move in and start enjoying your new home!

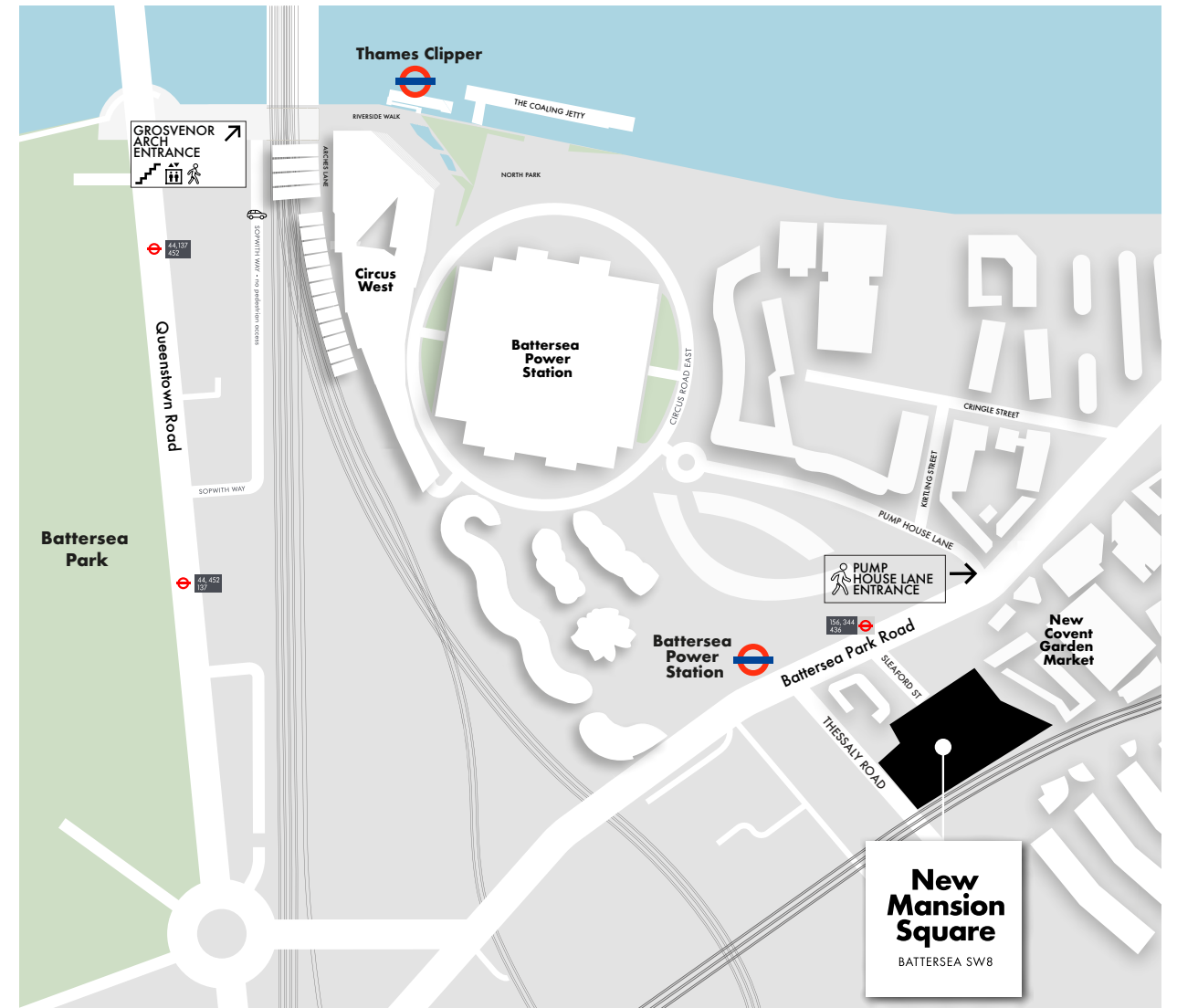
FIND OUT MORE ABOUT SHARED OWNERSHIP

Peabody has a range of resources to help you learn more about what is involved.

[FIND OUT MORE >](#)



Map not to scale



Map not to scale



Peabody creates great places where people want to live, adding value by upholding high design standards, building sustainable, high-quality new homes that stand the test of time and making a positive difference through ongoing commitment to our communities. Our mission is to help people flourish.



BUILDING HISTORY

Formed 160 years ago by the American financier and philanthropist George Peabody, Peabody is one of the UK's oldest and largest housing associations. Together with Catalyst Housing who joined the Group in 2022, we are responsible for more than 104,000 homes across London and the Home Counties.



SOCIAL IMPACT

In line with our social purpose, Peabody re-invests its surplus to provide more homes and services. We deliver services to 220,000 residents, supporting customers and the wider communities in which we work. We focus on those who need our help the most, working with people and communities to build resilience and promote wellbeing. We invest around £11m each year through our Community Foundation, to support people to be healthier, wealthier and happier.



CUSTOMER FOCUS

Over 90% of customers said they would recommend Peabody. Our customers' feedback helps shape the design of our homes and community services based on the needs of each neighbourhood. We value our customers and listen to what they have to tell us. Peabody are proud to have achieved 'Gold' in the independent customer satisfaction awards three times in a row and strive for excellence in all that we do.



QUALITY DESIGN & SUSTAINABILITY

Peabody's reputation is one of the most respected in the housing industry, renowned for high quality, innovative design. We work with industry experts and continually monitor quality throughout the design, procurement and development process. We aim to make a positive impact on climate change for our residents, communities and the environment, with an ambition to achieve net zero carbon in our new and existing homes by 2050.



STRONG GROWTH

With a growing pipeline, Peabody continues to invest in building quality new homes with high design standards. We create homes in great locations which are safe, easy to maintain and long-lasting. Peabody delivers long-term returns on investment. With an asset base of £8.3bn, Peabody is well placed to build thousands more top quality, well-maintained homes each year.



AWARD WINNING

In recent years, Peabody has been recognised and awarded more than 60 prestigious awards, including the Sunday Times 'Homebuilder of the Year' and the Grand Prix award at the Evening Standard New Homes Awards. We also work with award winning partners who share our values, high design standards and focus on great customer experience.



ARDEN AT PARKSIDE SE10



More than just a place to live

[FIND YOUR PLACE >](#)



New Mansion Square, Battersea, Wandsworth SW8 5AB

Every care has been taken in the preparation of this brochure. The details contained herein are for guidance only and should not be relied upon as exactly describing any of the particular material illustrated or written by any order under the Consumer Protection from Unfair Trading Regulations 2008.

This information does not constitute a contract, part of a contract or warranty. The developer operates a programme of continuous product development. Features, internal and external, may vary from time to time and may differ from those shown in the brochure. New Mansion Square is a marketing name and may not form part of the postal address for these properties.

Apartment layouts provide approximate measurements only. Dimensions, which are taken from the indicated points of measurement, are for guidance only and are not intended to be used for carpet sizes, appliance space or items of furniture. Measurements are rounded down and we work towards 5% tolerance. Apartment areas are provided as gross internal areas and may vary. Bathroom and kitchen layouts are indicative only and are subject to change. Wardrobe size and position may vary. Ceiling height may vary within select apartments. All balcony/terrace dimensions and areas are approximate and may vary. The information contained within this document does not constitute part of any offer, contract or warranty. Whilst the plans have been prepared with all due care for the convenience of the intending purchaser, the information contained herein is a preliminary guide only. Please speak to the sales team for more information. Information correct as of January 2023.