



PERPETUANA | 4 BEDROOM

WEAVERS WAY



The Perpetuanas feature four spacious double bedrooms, two of which have a dedicated ensuite. The main bathroom has a freestanding feature bath, large vanity unit, porcelain tiles, and – like every room in the house – underfloor heating.

This sense of space and luxury continues on the ground floor. Here, both the large open plan kitchen–dining room with kitchen island and separate living room open out onto the garden with its views of the rolling Devon countryside.

The Perpetuanas also feature a dedicated study, a separate laundry room, two off–road parking spaces, and a single or double garage (plot dependent). These combine with the fabric–first approach of every Weavers Way eco house to create a luxurious, cosy and welcoming home of the future.

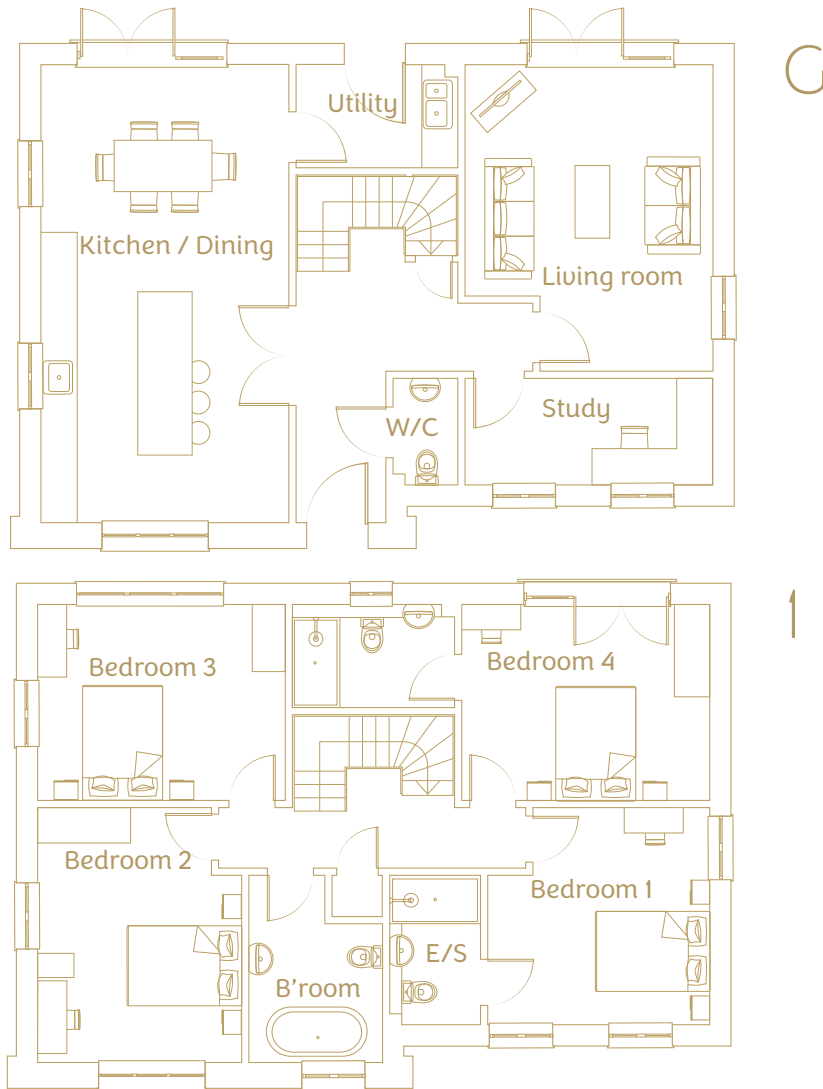
PLOT 2 & 5*

*Plot 5 is a mirror image – the kitchen / dining room is on the right hand side..



PERPETUANA

WEAVERS WAY



Total internal area: 161.4 sq m

Ground floor

Living 19.2m² | 4.1m x 5.1m
Kitchen / Dining 31m² | 4.1m x 7.6m
Utility 4.6m² | 2.7m x 1.7
W/C 1.9m² | 1.1m x 1.8m
Study 7.2m² | 4.1m x 1.8

First floor

Bedroom 1 12.3m² | 3.7m x 3.6m
Ensuite 3.7m² | 1.5m x 2.5m
Bedroom 2 13.7m² | 3.4m x 4.2m
Bedroom 3 13.3m² | 4.1m x 3.2m
Bedroom 4 13.3m² | 4.1m x 3.2m
Ensuite 4.6m² | 2.7m x 1.7m
Bathroom 6.1m² | 2.2m x 3.0m

PLOT 2 & 5