

Arden Road

Barton-Under-Needwood, Burton-on-Trent, DE13 8LF



A superb semi detached house that has been extended to offer a good sized family home, located in this sought after village.

£259,000

John German 

Situated in the sought after village of Barton under Needwood that offers a wide range of amenities including shops, post office, public houses, doctors' surgery, pharmacy, eateries, sports clubs, Barton Marina and schooling at all levels including the highly regarded John Taylor High School. There are excellent transport links via the A38 to Burton, Derby, Lichfield, Birmingham and the A50.

Accommodation - A side entrance door opens into the hallway with a useful storage cupboard and stairs to the first floor.

The kitchen is fitted with a range of base and eye level units with work surfaces over and space for appliances. There is a window to the front and a door into a family room/study/fourth bedroom with built in storage cupboard and a front facing window.

To the rear an extended open plan living area, a generous size lounge with a focal point fire surround and archway into a spacious sitting/dining area with patio doors out to the rear garden.

On the first floor are three well proportioned bedrooms. The master bedroom is a particularly spacious room with space for fitted wardrobes. Completing the first floor is the family bathroom having a three piece suite including an electric shower.

The rear garden has a paved patio and lawn beyond with side pathway. Gated side access leads to the front where there is a driveway providing off road parking.

Note: Viewing is strictly by appointment.

Tenure: Freehold (purchasers are advised to satisfy themselves as to the tenure via their legal representative).

Services: Mains water, drainage, electricity and gas are believed to be connected to the property but purchasers are advised to satisfy themselves as to their suitability.

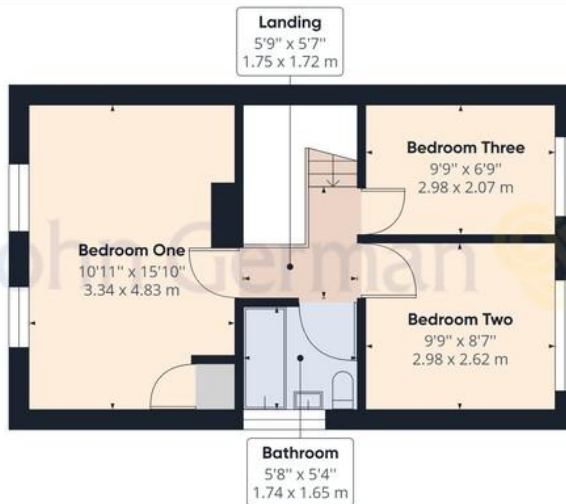
Useful Websites: www.eaststaffsbc.gov.uk
www.gov.uk/government/organisations/environment-agency

Our Ref: JGA/06022023

Local Authority/Tax Band: East Staffordshire Borough Council / Tax Band B



Ground Floor



Floor 1

John German

Approximate total area⁽¹⁾
 971.20 ft²
 90.23 m²

(1) Excluding balconies and terraces

While every attempt has been made to ensure accuracy, all measurements are approximate, not to scale. This floor plan is for illustrative purposes only.

GIRAFFE360





Score	Energy rating	Current	Potential
92+	A		
81-91	B		82 B
69-80	C		
55-68	D	66 D	
39-54	E		
21-38	F		
1-20	G		

 OnTheMarket

 rightmove

 RICS

 arla
propertymark
PROTECTED

 naea
propertymark
PROTECTED

 The Property
Ombudsman

 tsj
APPROVED CODE
TRADING STANDARDS UK

John German
21 Main Street, Barton under Needwood, Burton-On-Trent, Staffordshire, DE13 8AA

01283 716806

barton@johngerman.co.uk

Agents' Notes

These particulars do not constitute an offer or a contract neither do they form part of an offer or contract. The vendor does not make or give and Messrs. John German nor any person employed has any authority to make or give any representation or warranty, written or oral, in relation to this property. Whilst we endeavour to make our sales details accurate and reliable, if there is any point which is of particular importance to you, please contact the office and we will be pleased to check the information for you, particularly if contemplating travelling some distance to view the property. None of the services or appliances to the property have been tested and any prospective purchasers should satisfy themselves as to their adequacy prior to committing themselves to purchase.

Referral Fees

Mortgage Services - We routinely refer all clients to APR Money Limited. It is your decision whether you choose to deal with APR Money Limited. In making that decision, you should know that we receive on average £60 per referral from APR Money Limited.

Conveyancing Services - If we refer clients to recommended conveyancers, it is your decision whether you choose to deal with this conveyancer. In making that decision, you should know that we receive on average £150 per referral.

Survey Services - If we refer clients to recommended surveyors, it is your decision whether you choose to deal with this surveyor. In making that decision, you should know that we receive up to £90 per referral.

Ashbourne | Ashby de la Zouch | Barton under Needwood
Burton upon Trent | Derby | East Leake | Lichfield
Loughborough | Stafford | Uttoxeter

JohnGerman.co.uk Sales and Lettings Agent