



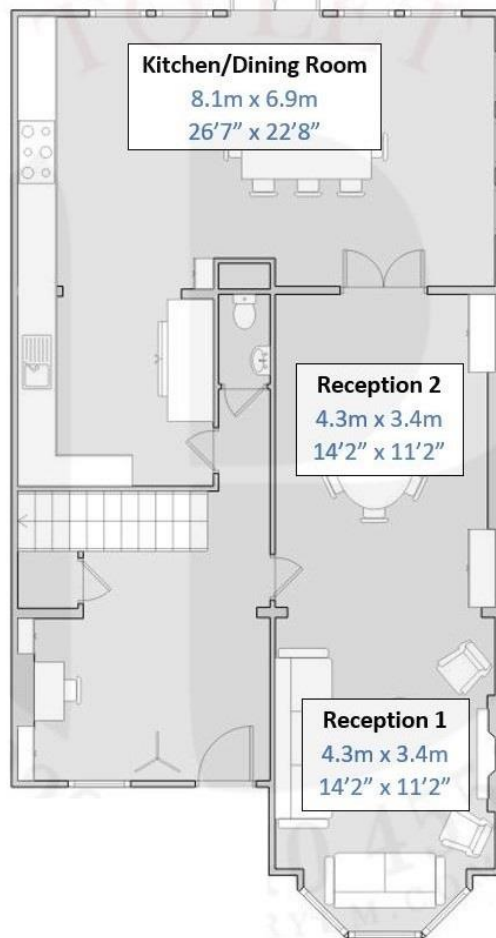
- Four Double Bedrooms
- Two and Half Bathrooms
- Large Living Kitchen
- South Facing Garden
- Garden Room
- Detached
- Freehold

30 Gloucester Road, Kew, Richmond, TW9 3BU

Asking Price: £2,000,000 - Freehold

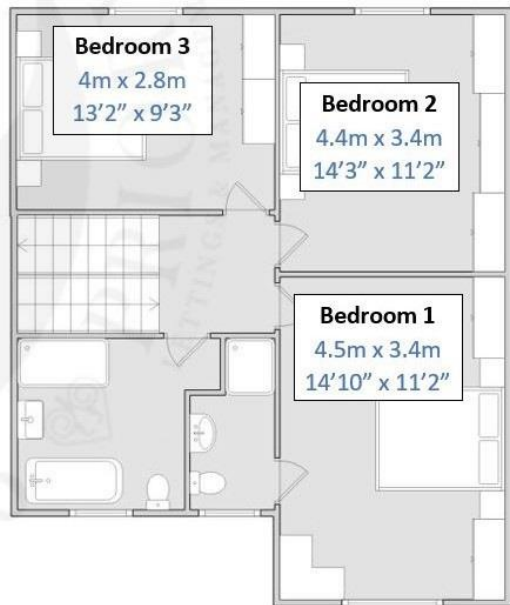
Wonderfully Spacious Detached Victorian Family House on popular road just off Kew Green. Close to both Kew Bridge Station and Kew Gardens Station, the Royal Botanical Gardens and Kew Village's shops & restaurants. This property offers an interconnecting sitting/dining room, a large kitchen and dining area, master bedroom with ensuite shower room, three further double bedrooms, family bathroom with bath and separate walk-in shower, downstairs cloakroom, basement and a pretty, south facing garden with office/storage room.

EPC – D 56 (Potential 74 C) Council Tax Band - G

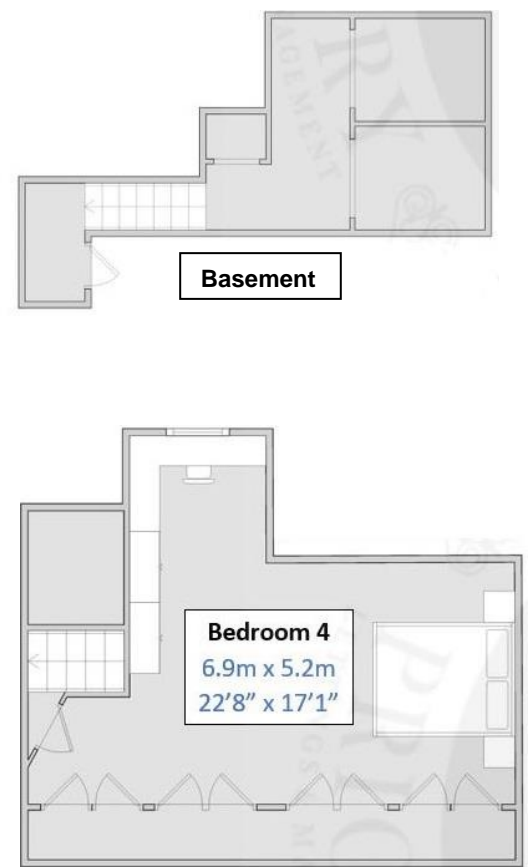


**Ground Floor**

**Gloucester Road**  
Approx. gross internal floor area:  
218m<sup>2</sup> / 2350ft<sup>2</sup>



**First Floor**



**Second Floor**

16 Kew Green  
Richmond  
Surrey  
TW9 3BH

www.priorylm.com  
020 8940 4555  
sales@priorylm.com

Agents Note: Whilst every care has been taken to prepare these sales particulars, they are for guidance purposes only. All measurements are approximate and are for general guidance purposes only and whilst every care has been taken to ensure their accuracy, they should not be relied upon and potential buyers are advised to recheck the measurements