

134 Lipson Road | Lipson | Plymouth | PL4 7NU

Guide £280,000-£300,000

A centrally located five bedroomed investment property.

This period town house is situated within Lipson, the house is walking distance from Freedom Fields Park, Mutley Plain, Plymouth University and the City Centre.

Upon inspection you will find an entrance vestibule, entrance hall, open plan living kitchen, two en-suite double bedrooms and WC on the ground floor. The first floor offers three more en-suite double bedrooms bedrooms and another WC.

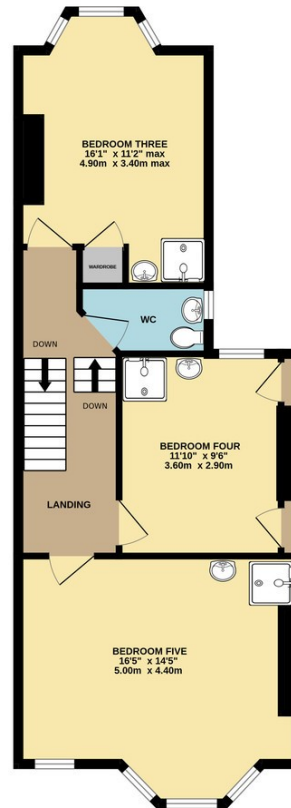
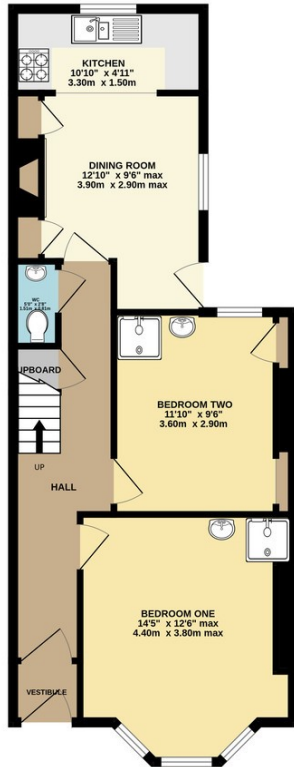
Outside there is a courtyard garden, with gated access to the rear service lane. The property benefits Upvc double glazing, gas central heating system and being located close to local facilities.

- Investment Property
- Five En-Suite Bedrooms
- Gas Central Heating System
- Upvc Double Glazing
- Open Plan Living Kitchen
- Short Walk To Park
- Walking Distance To City



GROUND FLOOR
591 sq.ft. (54.9 sq.m.) approx.

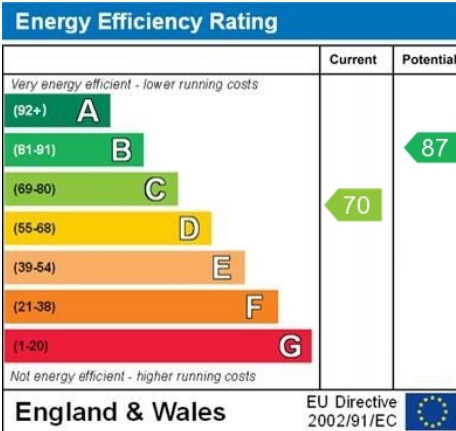
1ST FLOOR
603 sq.ft. (56.0 sq.m.) approx.



Contact Details

48 Ebrington Street
Plymouth
Devon
PL4 9AD

www.athomelettings.com
info@athomeproperty.co.uk
01752 777070



WWW.EPC4U.COM

Agents Note: Whilst every care has been taken to prepare these sales particulars, they are for guidance purposes only. All measurements are approximate are for general guidance purposes only and whilst every care has been taken to ensure their accuracy, they should not be relied upon and potential buyers are advised to recheck the measurements